

2016

ANNUAL MEETING





LOOK AT THESE NUMBERS

POWER OF TEAMWORK



THANK YOU
for a great year!

WELCOME

2016 ANNUAL MEETING

JAMES L. RHODEN III
Managing Principal

MICHAEL S. MINUTELLI
Managing Principal

DEAN de FREITAS
Managing Principal

MICHELE L. HARRY
Vice President

CORPORATE SERVICES

PROGRAM MANAGEMENT

PATTY FARR
Development Manager

ASHISH BAGLE
Development Intern

ESTIMATING

ROB WASSERMAN
Chief Estimator

TBD
Senior Estimator

ESTIMATING STAFF
4

MARKETING/HR/ADMIN

SAMANTHA JOHNSON
Graphic Designer

BRITTANY THOMPSON
HR Generalist

JENNIFER AUXIER
Executive Assistant

BRITNEY CANNADY
Receptionist/Admin

ACCOUNTING/FINANCE

MATT HOTT
Controller

RENA CRABILL
Internal Auditor

MILISSA DOUGLAS
Payroll Specialist

TABITHA DOUGLAS
Office Manager/Accounting

TINA RATCLIFF
Staff Accountant



STEWART EVANS
Vice President

NATHAN HARBISON
Director, Special Projects

BILL TRACY
General Superintendent

STEVEN LINTON
Senior Project Manager

DAVID HOWARD
Construction Manager

JACKIE MCGARITY
Project Manager

ALLAN WILLOUGHBY
Superintendent

KERRI WELLS
Assistant Project Manager

FRANK SHEPHERD
Superintendent

CHRIS KEITH
Office Engineer

BRIAN BOZARTH
Superintendent

NICHELLE BELL
Project Administrator

DAVE ROLLINSON
Foreman

REBECCA DINOFF
Project Accountant

FIELD EMPLOYEES
10

INTERNS
2



DAVID CHILDERS
Principal

GABE JOHNSON
Vice President

RICHARD BONDURANT
Construction Manager

GREG ORR
Construction Manager

STEVE HOWSON
Construction Manager

CHIP EDWARDS
Construction Manager

DANICA BUCKLEY
Project Administrator

BENNETT SHELTON
Field Intern

FIELD EMPLOYEES
6

INTERNS
1



JAMES L. RHODEN III
Managing Broker

RESIDENTIAL

LAURIE COLLINS
Associate Broker

MARTIN SPATT
Salesperson

GINA DAVIA
Salesperson

ASHLEY O'NEIL
Salesperson

KATIE ZEGARELLI
Salesperson

HEATH MILLIGAN
Principal

COMMERCIAL

JACK GERBER
Land Specialist



BILL JOHNSON
Principal

SCOTT MCELROY
Estimator/Project Manager

WILBER MARTINEZ
General Superintendent

NICK CARTER
Project Manager

GAIL JORDAN
Office Administrator

FIELD EMPLOYEES
23



SCOTT BARR
Principal

PAM JONES
Sales Coordinator

OUTSIDE SALESMAN (U)
17



AMIT KUMAR
Managing Principal

PAUL JONES
Chief Software Architect

WAYNE VAN VOORHIS
Senior Software Engineer

NAR KASALA
Senior BizTalk Developer

RAM SIGH
Integration Programmer Analyst

SOMENDRA SHUKLA
Integration Programmer Analyst

OFFSITE CONSULTANTS
3

2015 - 2016

NEW FACES



2015 - 2016

A YEAR IN REVIEW

- 25 New Team Members!
- Macallan Construction hired Vice President of Construction & General Superintendent
- Addition of Corporate Controller
- Randall Mill Development
- Addition of Aidant Technologies in April 2016
- Refresh of Macallan Homes Website
- Record Revenue Year for All Companies
- Acquisition of Tractor Trailer and new Equipment for Global Stability
- JF&CS is largest Commercial Construction Project to Date
- Office Expansion & Renovation (Again)
- Addition of Program Management Division
- Macallan/Macauley Partnership
- 2525 Park Central Renovation & Tenant Move-in
- LiteWorks Partnership with Brand Vaughan Lumber
- Macallan Homes Second Spec House in Buckhead
- Largest Internship Group since Inception
- Sold Buffington Road Property
- First Macallan Family Day
- Successful Partnership with Brumby Elementary



MACALLAN

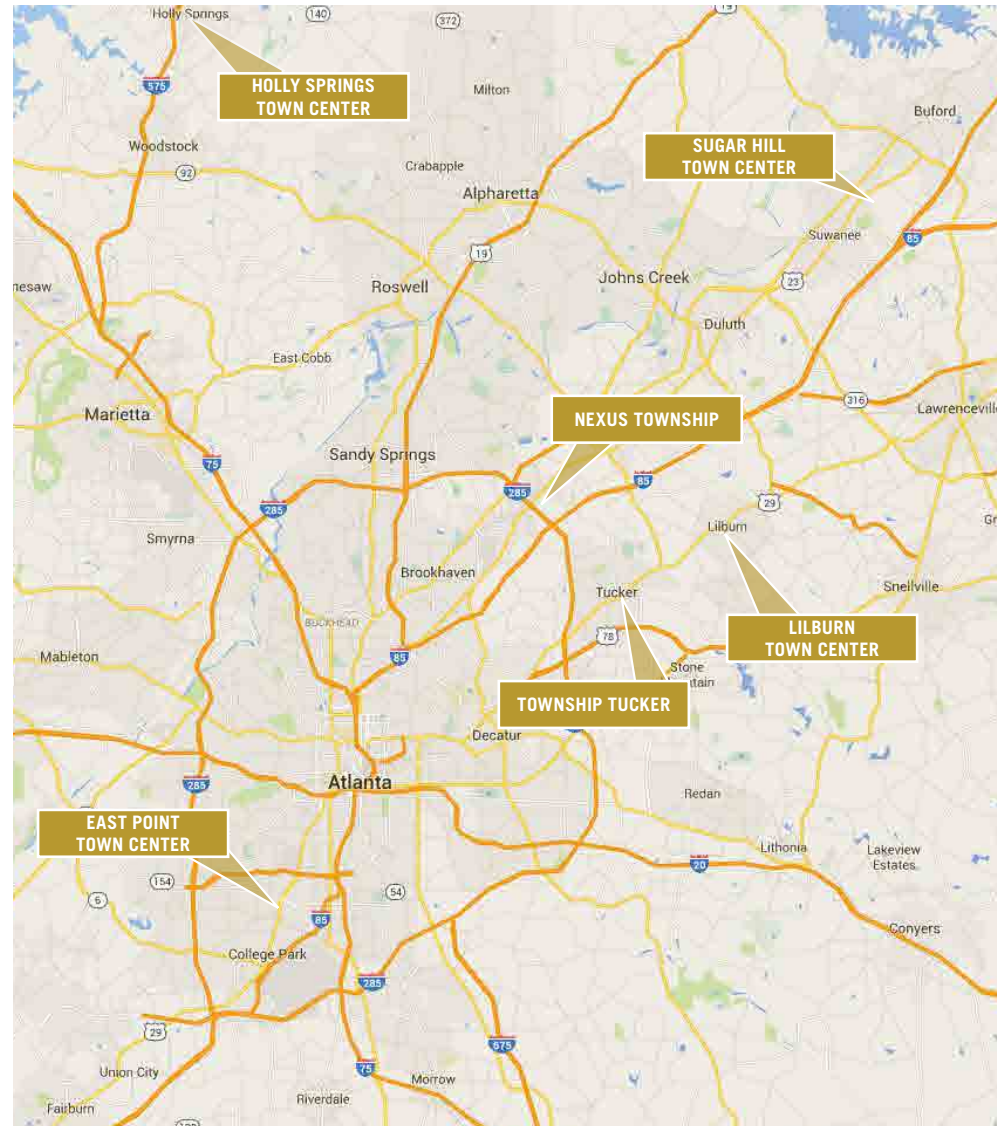
MACAULEY INVESTMENTS

TOWN CENTERS & TOWNSHIPS

- Macauley specializes in walkable, mixed-use, pedestrian friendly developments located in suburban Atlanta Town Centers and Townships.
- Most of the Macauley Projects feature Public Private Partnerships
- Macauley relationship with Macallan goes back to 2004 when Jay, Mike, and Michele all worked with Stephen Macauley
- Today Macallan provides Macauley with Corporate Services including:
 - Strategic Advisory Services
 - Program Management
 - Marketing and Creative Services
 - Accounting Services
 - HR Services

SERVICES TEAM

Jay Rhoden
 Patty Farr
 Ashish Bagle
 Michele Harry
 Matt Hott



MACAULEY INVESTMENTS

NEXUS TOWNSHIP

- The property is located at Buford Highway and I-285 in Doraville, Georgia.
- Nexus will be a dynamic mixed-use walkable community with specialty retail, multi-cultural restaurants, office, multi-family, senior living and a select service hotel.
- Situated on 13 acres with a central pedestrian friendly promenade, Nexus will have gardens, water features, arts and dramatic lighting elements.



NEXUS

BUFORD HIGHWAY



MACAULEY INVESTMENTS

NEXUS TUCKER

- NEXUS Tucker is located at Mountain Industrial Boulevard and Hugh Howell Road (DeKalb County).
- The 88 acre site features a Monet's Water Lily Pond recreation area with walking trails, an urban garden, a pedestrian friendly central lawn/amphitheater, Smoke Rise Elementary School, Primrose Schools child care as well as specialty retail and office suites, a hotel, senior living and multi-family apartments.



NEXUS
TUCKER

MACAULEY INVESTMENTS

HOLLY SPRINGS TOWN CENTER

- The Holly Springs site is situated at the crossroads of Highway 5 and Hickory Road across from an iconic Cultural Plaza and City Park adjoining the Jackson Street Straw Market.
- Lofts and flex office space located above boutique retail wrap around a central civic building and multi-use commons greenspace. Jewel box retail and restaurants address the pin corner with upscale multi-family apartments, senior independent living, assisted living, memory care, town homes and cottage homes comprising the remainder of this 25 acre site.



MACAULEY INVESTMENTS

EAST POINT TOWN CENTER

- An iconic sculpture, water feature, and classic garden highlight the entrance to this 8 acre site and create a gateway to the central downtown business corridor on Highway 29. Senior independent living, followed by multi-family residential cascade through the site to adjoin an urban grocer and specialty retail.
- An interactive plaza flanked by archway entrances create connectivity between the senior independent living and multifamily residential.
- An existing county library and Grady health center will be incorporated into the project through landscape, hardscape and pedestrian connections.



MACAULEY INVESTMENTS

LILBURN TOWN CENTER

- The Lilburn site is strategically located on Lawrenceville Highway and Main Street directly across from a recently constructed monumental City Hall and library. This site features a “Village Green” encompassed by boutique retail and specialty restaurants. Multi-family apartment units and Senior Independent Living embrace this 7 acre mixed-use development.



SUGAR HILL TOWN CENTER

- Situated directly across from Sugar Hill City Hall and “the Sugar Bowl” amphitheater, this 7 acre site of specialty retail, restaurants, multi-family and townhomes, will be central to new dynamic, adjoining mixed use developments. A city Epicenter embracing retail, a performing arts theatre, and a public gymnasium along with a Wyndham full service hotel, conference center and condominiums, both flank the Macauley Town Center site.





MACALLAN
CONSTRUCTION

COMPLETED PROJECT

SENIOR LIVING

DISCOVERY VILLAGE AT SUGARLOAF

- Select Bid
- New construction of a 2-story, 24 unit independent living facility - 21,160 SF
- Construction and renovation of existing 4,000 SF building - living, dining, bistro, and library

THANK YOU PROJECT TEAM:
Dean, Nathan, Kerri, Dave, and Rob



EMORY UNIVERSITY

THE DEPOT AT EMORY UNIVERSITY

- 2,000 SF renovation of the historic train depot built in 1916
- Kaldi's Coffee is the new operator
- Renovations include a completely new kitchen

THANK YOU PROJECT TEAM:

Stewart, Brian, and Kerri

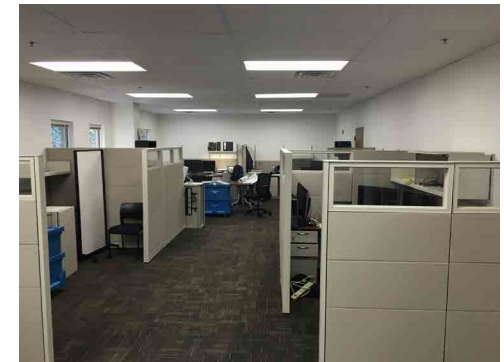


EMORY FACILITY OFFICE RENOVATION

- 3,500 SF renovation of offices and conference spaces
- Fast-track - 4 week project

THANK YOU PROJECT TEAM:

Jackie, Bill, and John



EMORY AMUC RESTROOM RENOVATION

- Complete renovation of three bathrooms
- Fast-track - 4 week project

THANK YOU PROJECT TEAM:

Jackie, Bill, and John



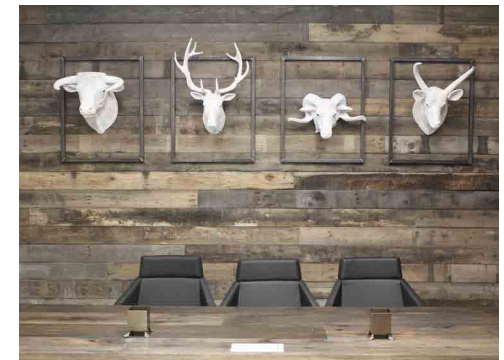
TENANT IMPROVEMENT

ROAM INNOVATIVE WORKSPACE

- Negotiated Contract
- 10,179 SF of interior renovation for a highly creative open office space
- High-end finishes including walnut millwork, specialty light fixtures, feature windows, garage doors, large areas of write and wipe surfaces, and the latest IT project and networking systems.

THANK YOU PROJECT TEAM:

Stewart, Steven, Michele, Frank, and Chris





COMPLETED PROJECT

TENANT IMPROVEMENT

BEAVEX

- Negotiated
- 12,480 SF
- Interior renovation of Class A office space

THANK YOU PROJECT TEAM:
Steven, Chris, Allan



COMPLETED PROJECTS

PARKS & RECREATION

LOST MOUNTAIN PARK

- Hard Bid for Cobb County Parks and Recreation
- Demolition and new construction of two buildings and restroom facilities

THANK YOU PROJECT TEAM:

Steven, Frank, and Rob



COBB COUNTY PARKS

- Hard Bid for Cobb County Parks and Recreation
- Two prototype tennis centers at 2 locations - demolition and replacement - 3,848 SF block, EIFS, structural steel framing, and shingle roof

THANK YOU PROJECT TEAM:

Steven, and Rob



COMPLETED PROJECTS

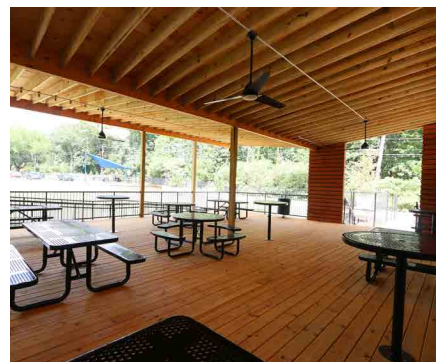
EDUCATION

ATLANTA CLASSICAL ACADEMY

- 8,883 SF modular building addition
- Construction of a 3,072 SF veranda at the north face of the modular building
- Large site utilities and grading project

THANK YOU PROJECT TEAM:

Stewart, Dean, Jackie, Allan, John, and Rob



PHI DELTA THETA AT GEORGIA TECH

- Renovation of second floor dorm level and first floor presidential suite
- Replacement of dorm room windows, relocation of existing laundry, and refurbish dorm level HVAC.

THANK YOU PROJECT TEAM:

Stewart, Jackie, Dave, John and Rob



COMPLETED PROJECTS

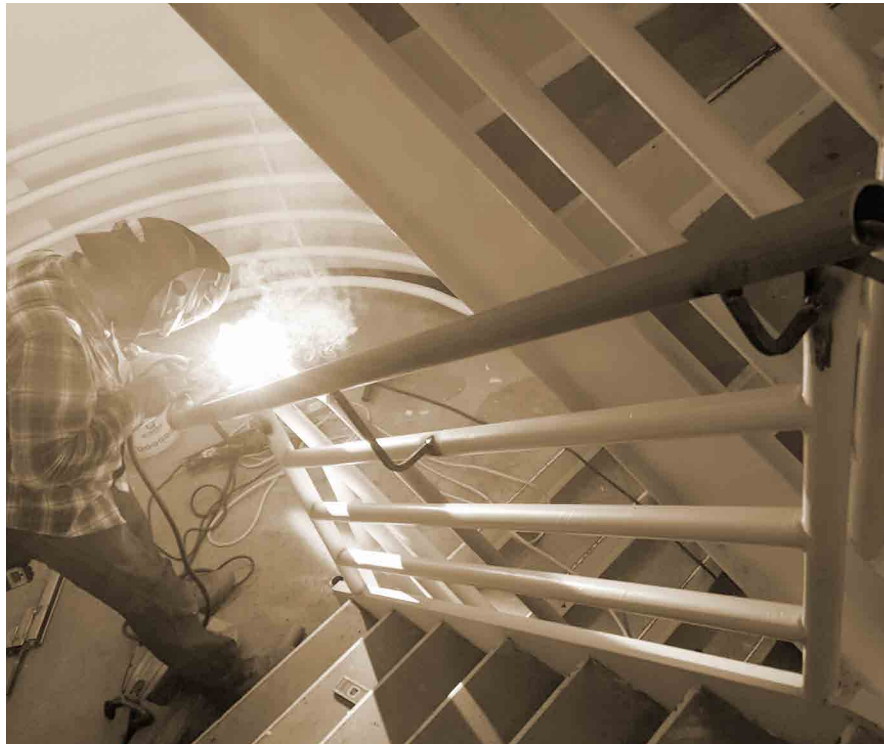
EDUCATION

GEORGIA STATE UNIVERSITY

- Negotiated
- ADA upgrades to 2 floors of the Urban Life building
- ADA upgrades to Science Annex building

THANK YOU PROJECT TEAM:

Stewart, Dean, Jackie, Chris, Allan, John, and Rob



KENNESAW STATE UNIVERSITY

- Built Backup Generator complex for Information Systems Department

THANK YOU PROJECT TEAM:

Stewart, Dean, Steven, and Allan



COMPLETED PROJECTS

COMMERCIAL

SOLIS DOWNWOOD

- European villa style luxury apartments
- Exterior cornice and balcony work
- Subcontractor package under Brasfield and Gorrie

THANK YOU PROJECT TEAM:

Dean, Nathan, Nichelle, and Rob



SIA

- 2,250 SF interior renovation for dermatology practice
- High-end finishes

THANK YOU PROJECT TEAM:

Dean, Frank, Kerri, and Rob



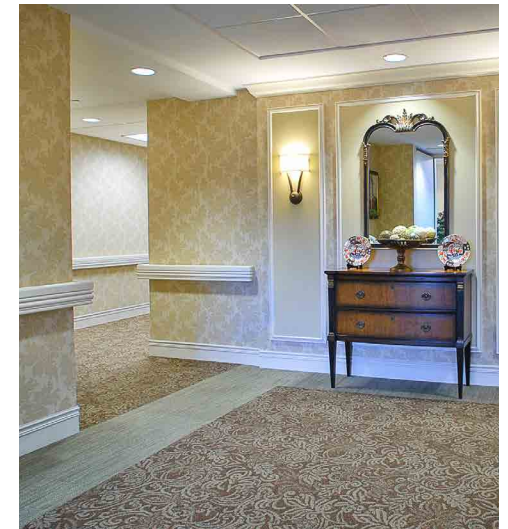
SENIOR LIVING

CANTERBURY COURT CCRC

- 300 unit, occupied, multi-building, high rise retirement community
- Demolition and interior renovation of over 130 different projects that include residential units as well as lobby, kitchen and exterior renovations
- Managed significant logistical challenges with major renovations in an operational facility

THANK YOU PROJECT TEAM:

Stewart, Dean, Nathan, David, Nichelle, and Rob





UNDERWAY/NEW PROJECTS

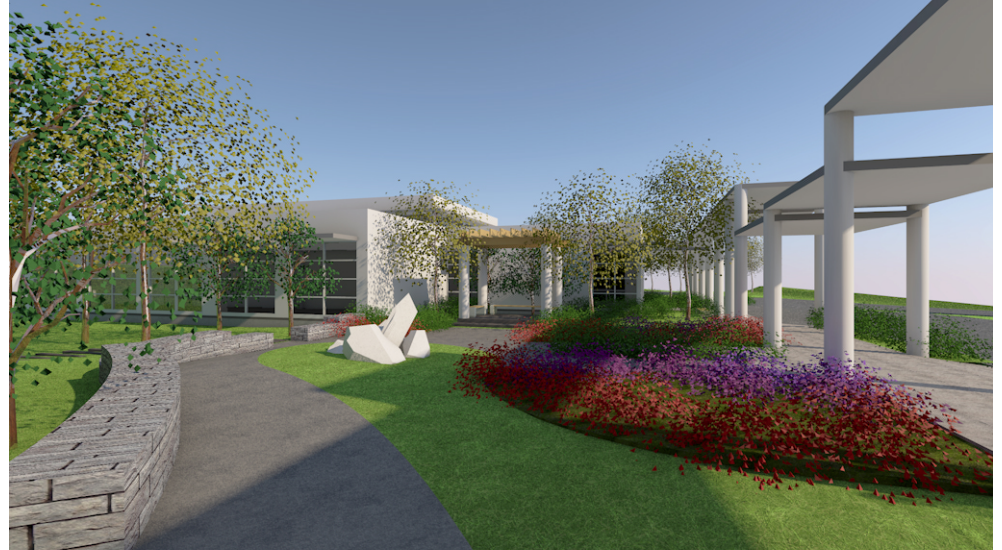
UNDER CONSTRUCTION

JEWISH FAMILY & CAREER SERVICES

- Negotiated
- 8,000 SF new construction - 8,000 SF renovation includes counseling and training center, and administration offices

PROJECT TEAM:

Stewart, Dean, Steven, Frank, Kerri, Chris, and Rob

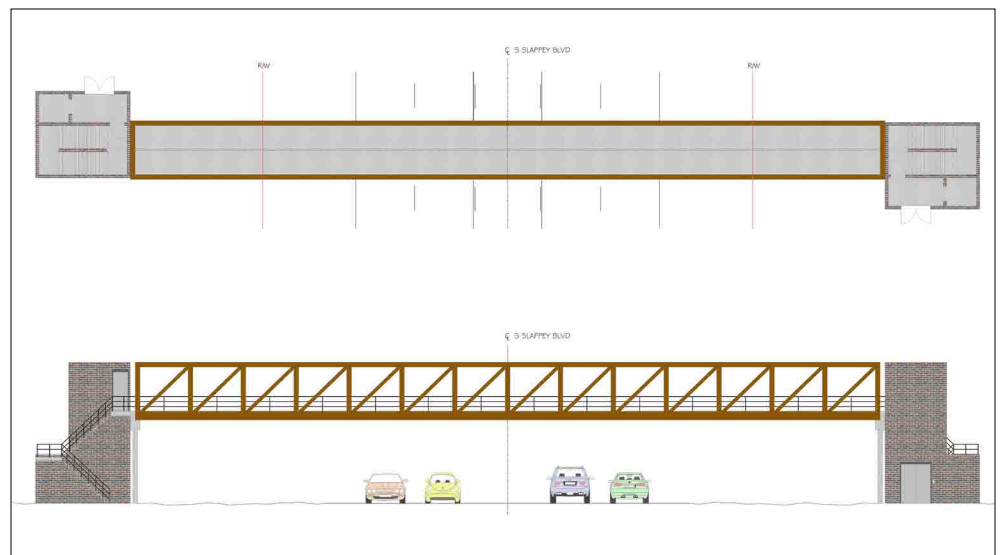


ALBANY TECHNICAL COLLEGE

- Design/Build project for GSFC
- Pedestrian bridge connecting east and west campus

PROJECT TEAM:

Dean, Steven, and Rob





UPCOMING

RECENTLY AWARDED:

Embry Hills Dental

- 3,500SF Dental Clinic Interior Build-out
- Starting Fall 2017

Johns Creek Baptist Church

- Infrastructure and Construction to support \$2.4M Audio/Video Upgrade with Clark
- Starting Winter 2017

TASK ORDER CONTRACTS:

- Digital Realty Data Centers
- ProSys Information Systems

PROJECTS IN HOT PURSUIT:

- Taylor Morrison Neighborhood Amenities
- Impact Church - East Point, GA
- Callanwolde Fine Arts Center Historic Restoration
- Emory University School of Theology
- Brasfield & Gorrie Super-Sub Packages
- Griffin Fund Apartment Renovations
- Westminster Presbyterian Church
- ProSys Information Systems Office Renovations

PROSPECTS:

Building Relationships with Developers and Architects



AIDANT
TECHNOLOGIES



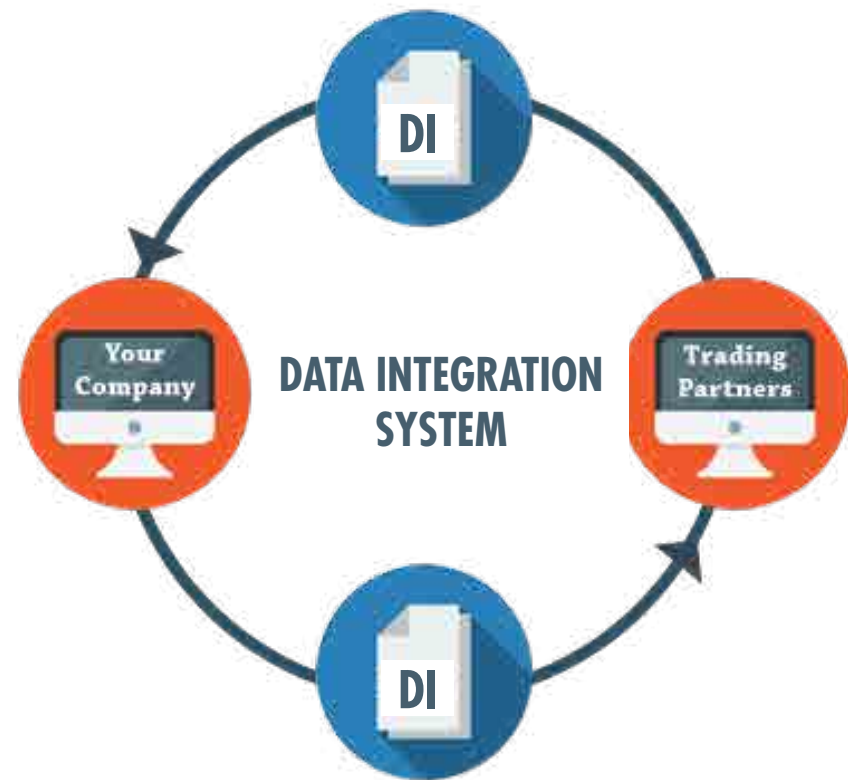
AIDANT TECHNOLOGIES

WHO WE ARE

Aidant creates products and service offerings that enable small, medium, and large businesses to integrate with their Trading Partners with quick and easy to use tool-kits, accelerators and platforms. These tools are interoperable On-premise, Off-premise and On-cloud.

Aidant's core strength in customizable standardized SDK tool-kits along with vertical specific mapping, development kit and professional services enable firms to create, migrate and customize their integration programs in a cost effective and shorter time to market. Leveraging Aidant's core competencies and knowledge across several industries, firms can maximize their ROI on IT spend and lower their Total Cost of Ownership.

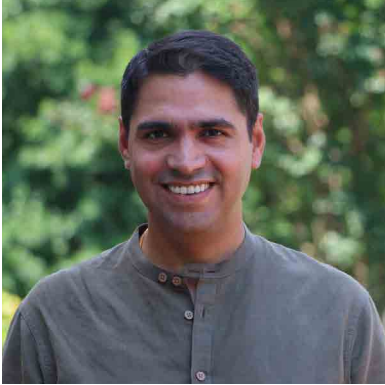
Aidant Technologies uses their industry relationship and core knowledge to provide the best solutions and IT strategies for technology road map guidance and key IT operations. IT processes streamlining and optimization is some of the basis of Aidant Technologies methodologies for all implementation.





AIDANT TECHNOLOGIES

THE AIDANT TEAM



AMIT KUMAR
Managing Principal



PAUL JONES
Chief Software Architect



NAR KASALA
Senior BizTalk Developer



WAYNE VAN VOORHIS
Senior Software Engineer



RAM SINGH
Senior EDI BizTalk Programmer



ON-SITE CONSULTANTS
Six (6)



AIDANT TECHNOLOGIES

OUR CLIENTS



CLIENT
Oldcastle Architectural

PROJECT TEAM
Amit - Lead



CLIENT
AGL

PROJECT TEAM
Ram -Lead
2 - Consultants



CLIENT
KLX

PROJECT TEAM
4- Consultants



CLIENT
Agrium

PROJECT TEAM
Amit - Lead



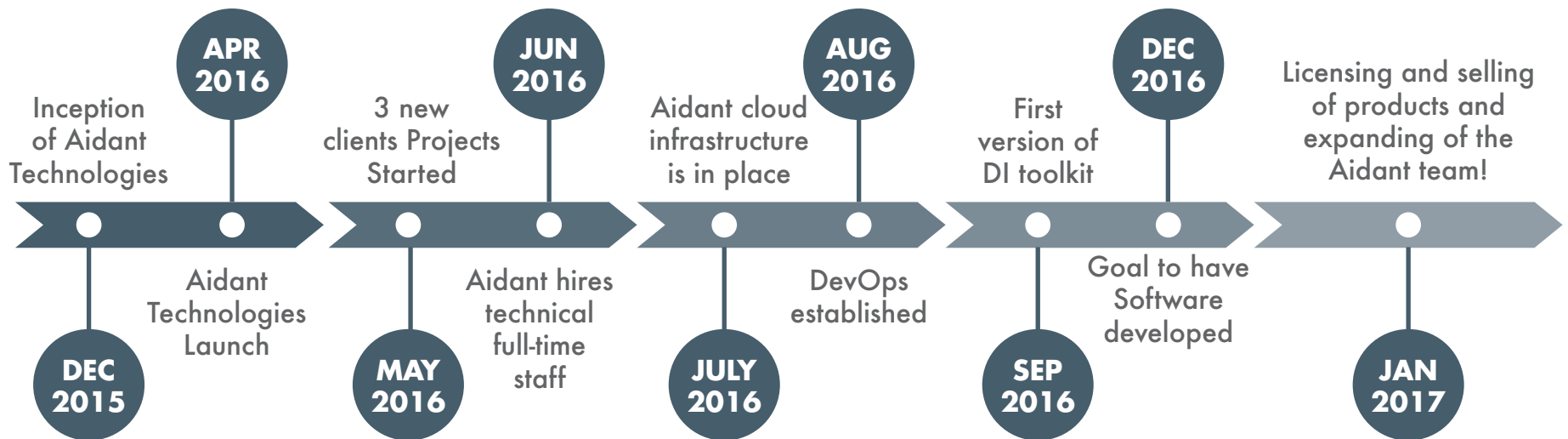
CLIENT
OFS

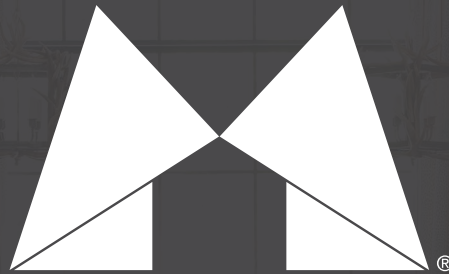
PROJECT TEAM
Paul - Lead
Nar



AIDANT TECHNOLOGIES

TIMELINE





MACALLAN
CUSTOM HOMES & RENOVATIONS

COMPLETED PROJECT

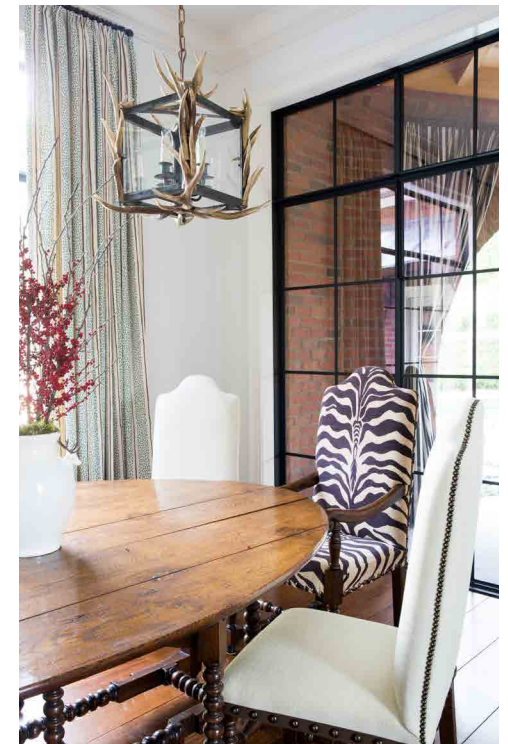
RENOVATION

NACOOCHEE PLACE

- Buckhead
- Traditional style
- New kitchen, porch addition, new hardwood floors, wine cellar and lots of built-ins

CONSTRUCTION MANAGER

Gabe Johnson





COMPLETED PROJECT

RENOVATION

ARC WAY

- Buckhead
- Historic Cottage
- Addition to back of house, interior renovations, exterior renovations and additional hardscape

CONSTRUCTION MANAGER

Greg Orr





COMPLETED PROJECT

RENOVATION

EUCLID AVENUE

- Inman Park
- Victorian Historic Exterior/Contemporary Interior
- Addition to back of house, interior renovations, exterior renovations and additional hardscape

CONSTRUCTION MANAGER

Greg Orr





COMPLETED PROJECT

RENOVATION

PACES FERRY WEST

- Buckhead
- Townhouse
- Addition to back of house, interior renovations, exterior renovations and additional hardscape

CONSTRUCTION MANAGER

Gabe Johnson





COMPLETED PROJECT

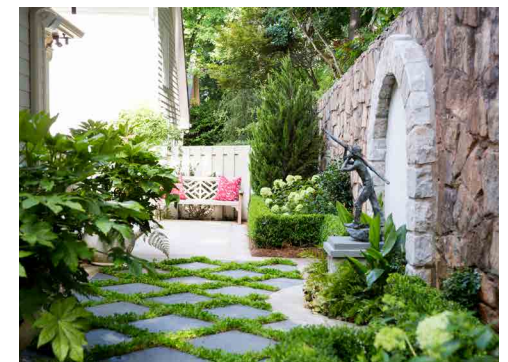
RENOVATION

PACES FERRY WEST

- Buckhead
- Townhouse
- Addition to back of house, interior renovations, exterior renovations and additional hardscape

CONSTRUCTION MANAGER

Gabe Johnson





COMPLETED PROJECTS

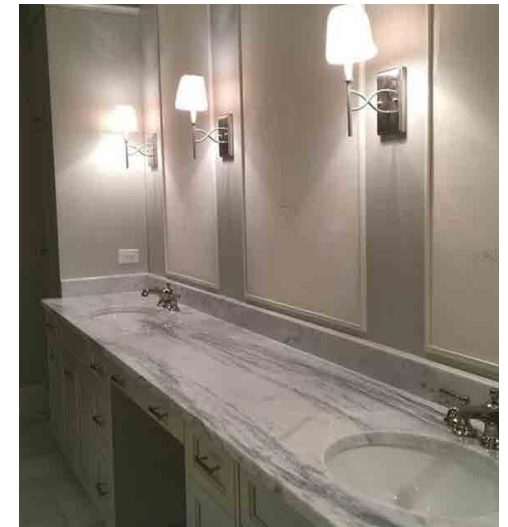
NEW CONSTRUCTION

EDINBORO ROAD

- Buckhead
- 4,797 SF Traditional Home

CONSTRUCTION MANAGER

Richard Bondurant





COMPLETED PROJECTS

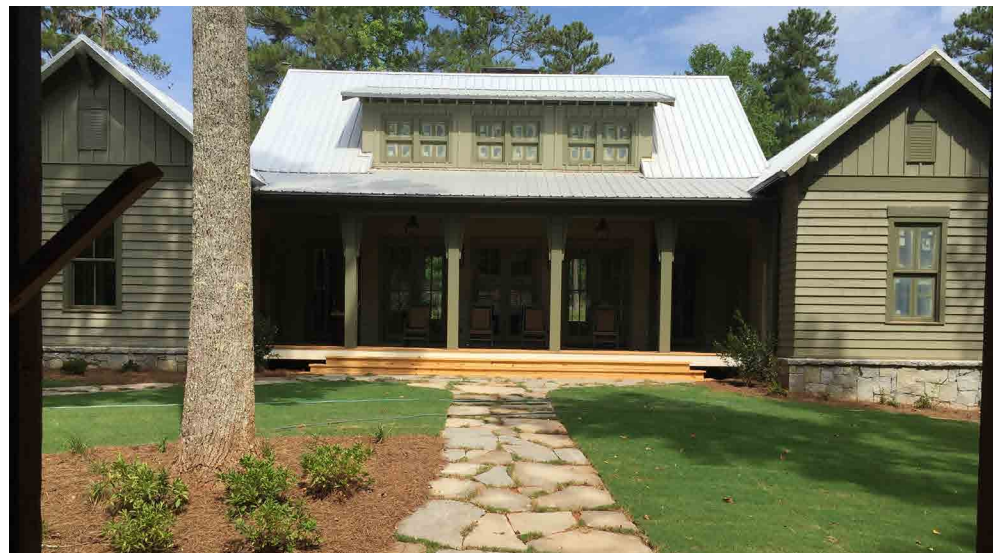
NEW CONSTRUCTION

MANSFIELD

- Mansfield, GA
- Traditional

CONSTRUCTION MANAGER

David Childers



UNDER CONSTRUCTION

NEW CONSTRUCTION

ROBIN HOOD ROAD

- Buckhead
- 10,712 SF Traditional

CONSTRUCTION MANAGER

Greg Orr



NORTHVIEW AVENUE

- Buckhead
- 4,000 SF Shingle Style

CONSTRUCTION MANAGER

Richard Bondurant



MOORES MILL ROAD

- Buckhead
- Traditional (Spec House)

CONSTRUCTION MANAGER

Richard Bondurant



UNDER CONSTRUCTION

NEW CONSTRUCTION

PARKSIDE DRIVE

- Garden Hills
- 6,400 SF Traditional

CONSTRUCTION MANAGER

Gabe Johnson



CLUBLAND TRAIL

- Indian Hills
- 5,559 SF Single Story

CONSTRUCTION MANAGER

Gabe Johnson



EAST PINE VALLEY

- Buckhead
- 3,750 SF Modern

CONSTRUCTION MANAGER

Steve Howson





UNDER CONSTRUCTION

RENOVATIONS

RIVERS ROAD

- Buckhead
- Traditional

CONSTRUCTION MANAGER

Greg Orr

HANOVER WEST

- Buckhead
- 1,793 SF Traditional

CONSTRUCTION MANAGER

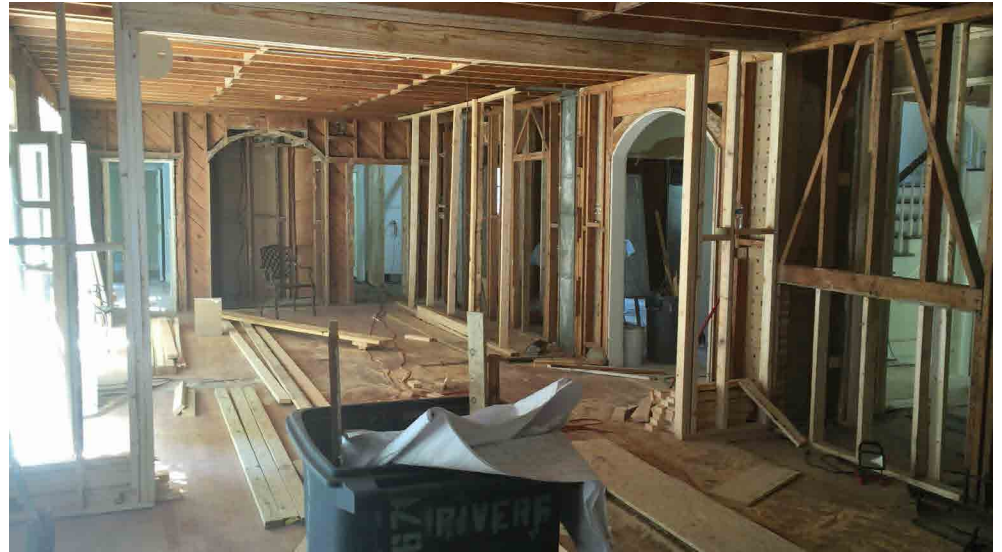
Richard Bondurant

RANDALL RIDGE ROAD

- Buckhead
- 5,800 SF Traditional

CONSTRUCTION MANAGER

Gabe Johnson



UNDER CONSTRUCTION

RENOVATIONS

WOODWARD WAY

- Buckhead
- 6,378 SF Traditional

CONSTRUCTION MANAGER

Steve Howson



MARNE DRIVE

- Buckhead
- 4,237 SF Traditional

CONSTRUCTION MANAGER

Steve Howson





**BREAK
TIME**

A group of seven men in business suits, arranged in two rows, with a central text box overlaid. The men are smiling and looking towards the camera. The text box is a yellow square with white text inside.

**HOW WELL
DO YOU
KNOW YOUR
PRINCIPALS?**



PRINCIPAL TRIVIA



- _____ 1. Who played water polo in high school?
- _____ 2. Who lived in a tent, in Alaska, for three months during college?
- _____ 3. Who had their first date with his wife at a hockey game (her idea)?
- _____ 4. Which Principal has seen every episode of Seinfeld at least 25 times?!?
- _____ 5. This Principal prefers cheap wine over good scotch!
- _____ 6. President George W. Bush wrote this Principal an excuse note for skipping school to meet him.
- _____ 7. This Principal won best dressed in high school.
- _____ 8. Who drove a golf cart into the river after a Georgia/Florida game?
- _____ 9. Which Principal got to dance the "jitterbug" and "twist" at half-time of a major bowl game?
- _____ 10. Which one of our Principals scores a 95% or better on Basement Karaoke?
- _____ 11. When this Principal needs a Band-Aid he usually goes with Dora or Cinderella.
- _____ 12. Who hosted a keg party on the Bobby Jones golf course?
- _____ 13. Which of our Principals has been to more than a dozen Grateful Dead Concerts?
- _____ 14. This Principal saw The Ramones as their first concert?
- _____ 15. He had his first hole-in-one when he was 14.
- _____ 16. Who was once a radio co-host?



A.
Mike Minutelli



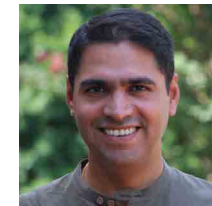
B.
Jay Rhoden



C.
Dean de Freitas



D.
David Childers



E.
Amit Kumar



F.
Heath Milligan



G.
Bill Johnson



H.
Scott Barr



PRINCIPAL TRIVIA



- D 1. Who played water polo in high school?
- F 2. Who lived in a tent, in Alaska, for three months during college?
- C 3. Who had their first date with his wife at a hockey game (her idea)?
- E 4. Which Principal has seen every episode of Seinfeld at least 25 times?!?
- H 5. This Principal prefers cheap wine over good scotch!
- B 6. President George W. Bush wrote this Principal an excuse note for skipping school to meet him.
- G 7. This Principal won best dressed in high school.
- A 8. Who drove a golf cart into the river after a Georgia/Florida game?
- C 9. Which Principal got to dance the "jitterbug" and "twist" at half-time of a major bowl game?
- E 10. Which one of our Principals scores a 95% or better on Basement Karaoke?
- H 11. When this Principal needs a Band-Aid he usually goes with Dora or Cinderella.
- D 12. Who hosted a keg party on the Bobby Jones golf course?
- B 13. Which of our Principals has been to more than a dozen Grateful Dead Concerts?
- A 14. This Principal saw The Ramones as their first concert?
- F 15. He had his first hole-in-one when he was 14.
- G 16. Who was once a radio co-host?



A.
Mike Minutelli



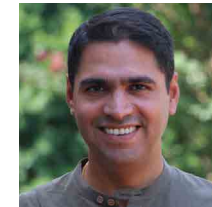
B.
Jay Rhoden



C.
Dean de Freitas



D.
David Childers



E.
Amit Kumar



F.
Heath Milligan



G.
Bill Johnson



H.
Scott Barr



LITEWORKS™

WINDOW & DOOR LLC



LITEWORKS™
WINDOW & DOOR LLC

COMPLETED PROJECTS

COMMERCIAL

THE BANKS II

- Brasfield & Gorrie
- Finished in Spring 2016
- \$1,000,000 in windows and doors



7TH & MIDTOWN

- Brasfield & Gorrie
- Liteworks brokered Jeld-Wen





LITEWORKS™
WINDOW & DOOR LLC

COMPLETED PROJECTS

COMMERCIAL

SOLIS DOWNWOOD

- Brasfield & Gorrie
- Finished Spring 2016
- \$400,000 bronze vinyl windows
- Luxury Buckhead apartments
- 2 bedroom / 2 bath / \$2150/month



PHI DELTA THETA AT GEORGIA TECH

- Macallan Construction
- Supply and install 32 windows
- \$40,000





LITEWORKS™
WINDOW & DOOR LLC

COMPLETED PROJECTS

RESIDENTIAL

HANNON RESIDENCE

- Trewin Homes
- Finished Spring 2016
- Windsor windows
- Parrett lift and slide door
- \$140,000



BRENNER RESIDENCE

- 12 Stone Builders
- Windsor windows and patio doors
- \$80,000





LITEWORKS™
WINDOW & DOOR LLC

COMPLETED PROJECTS

RESIDENTIAL

MANSFIELD, GEORGIA

- Macallan Homes
- First Lincoln job
- \$45,000





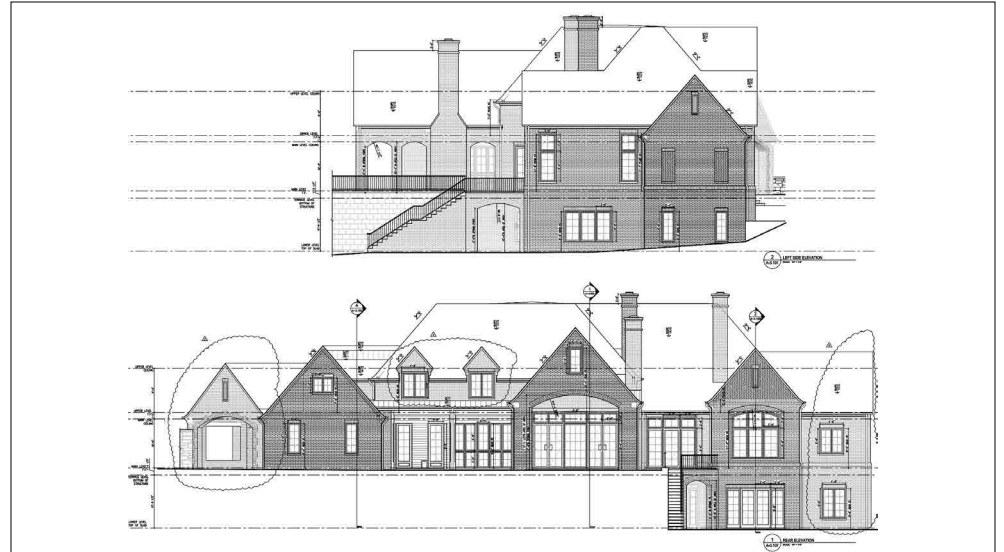
LITEWORKS™
WINDOW & DOOR LLC

UNDER CONSTRUCTION

RESIDENTIAL

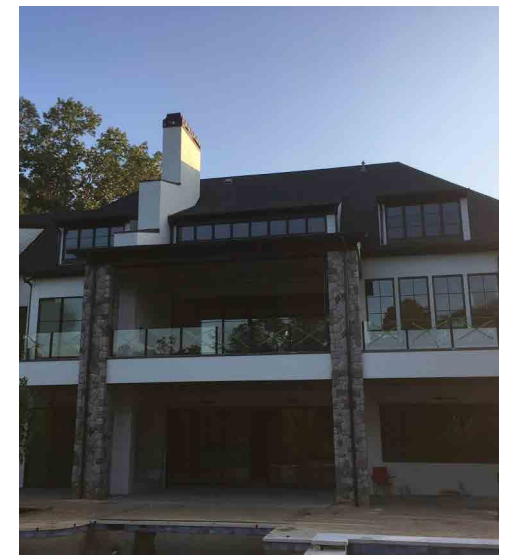
TARA TRAIL

- Design Construction by Craftmaster
- Lincoln windows
- \$102,000



ABERDEEN DRIVE

- Design Construction by Craftmaster
- Windsor windows
- Steel window look with clad wood windows with custom color
- \$80,000





LITEWORKS™
WINDOW & DOOR LLC

COMPLETED PROJECTS

RESIDENTIAL

CHILDERS RESIDENCE

- 10,000 SF home with custom windows
- 8 bedrooms, 8.5 bathrooms, with master on main
- 7.2 acres of land with 2 acres dedicated to horse stables
- 3,500 SF horse stable with variety of custom window sizes





LITEWORKS™
WINDOW & DOOR LLC

COMPLETED PROJECTS

JUST KIDDING!

THE REAL CHILDERS RESIDENCE

- Windsor Custom Radius Windows & Doors





LITEWORKS™
WINDOW & DOOR, LLC

UNDER CONSTRUCTION

RESIDENTIAL

RIERSON RESIDENCE

- Macallan Homes
- Sierra Pacific windows - with alder wood
- Custom millwork doors
- \$72,000





LITEWORKS™
WINDOW & DOOR LLC

UNDER CONSTRUCTION

COMMERCIAL

SOMERBY AT SANDY SPRINGS

- Brasfield & Gorrie
- Ply Gem vinyl windows
- \$225,000
- Completion on schedule for December 2016





LITEWORKS™
WINDOW & DOOR LLC

2016 - 2017

COMING SOON

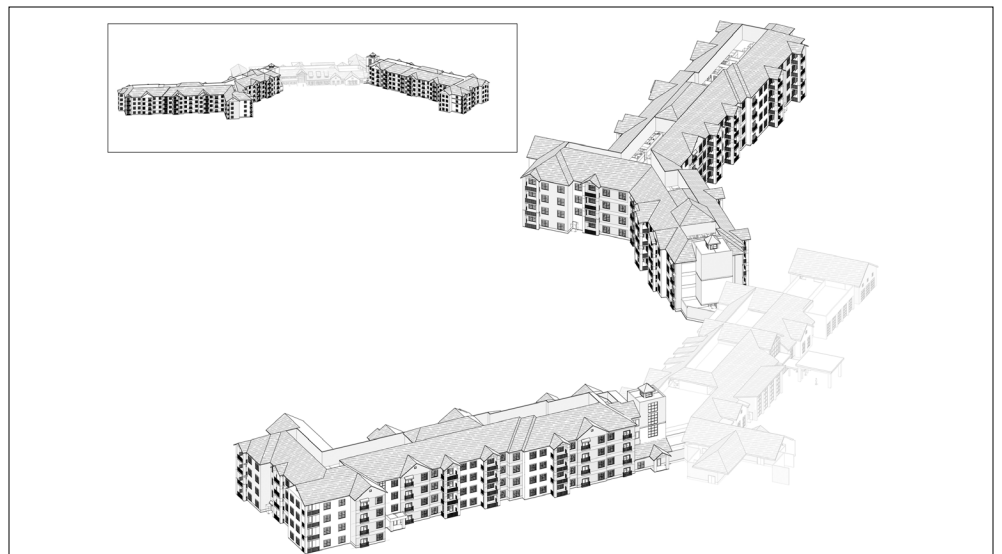
1270 SPRING STREET

- New South Construction
- Sierra Pacific windows and sliding doors
- Shipping to start in January 2017
- Purchase order received \$430,000



SPIRES AT BERRY COLLEGE

- Brasfield & Gorrie
- Negotiating now
- Quoted \$350,000





2016 - 2017

COMING SOON

RAGLEY HALL

- J Bryant Homes
- Windsor windows and LaCantina folding doors
- Builder committed total \$125,000



MITCHELL JOB

- Macallan Homes
- Quoted \$245,000





LITEWORKS™
WINDOW & DOOR LLC

NEW PARTNERSHIP

BRAND VAUGHAN LUMBER

BRAND VAUGHAN LUMBER COMPANY

- We have partnered with Brand Vaughan Lumber
 - Provide LiteWorks logistics
 - LiteWorks is their window specialist
- Great opportunity to provide better service and grow out sales significantly
- Four locations:
 - Tucker
 - Cumming
 - Madison
 - Columbus
- 17 additional salesmen

Strength
lies
within.





COMPLETED

EDUCATION

GEORGIA TECH PRACTICE GOLF RANGE

- Atlanta, GA
- 6,800 SF Design-Build Retaining Wall
- Remediation
- Supply all Backfill & Material

PROJECT TEAM

Nick Carter
Wilber Martinez
Multiple Crews



COMPLETED

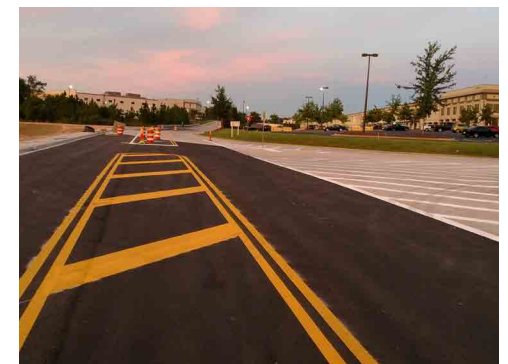
COMMERCIAL INDUSTRIAL

COLONIAL PIPELINE/ SOUTHERN NATURAL GAS

- Union City, GA
- 124 each 155 KIP Helical Anchors
- Protective Structure over Natural Gas & High Pressure Petroleum Easement

PROJECT TEAM

Nick Carter
Julio Guzman
Philip Smith Contracting



COMPLETED

COMMERCIAL RETAIL

iFLY

- Smyrna, GA
- Design-Build
- 1,900 SF Gravix Panel Wall
- Helical Shoring

PROJECT TEAM

Nick Carter
Cesar Sandoval



COMPLETED

MUNICIPAL

COVINGTON MUNICIPAL AIRPORT

- Covington, GA
- Design-Build
- Soil Nails & Wall Construction
- 9,500 SF
- Demucking & Ground Water Control

PROJECT TEAM

Nick Carter
Wilber Martinez
Julio Guzman



COMPLETED

RESIDENTIAL

SUN CITY PEACHTREE (DEL WEBB)

- Griffin, GA
- Demolition & Haul Off of Existing Wall
- Construction of New Wall and Backfill

PROJECT TEAM

Wilber Martinez
Nick Carter
Miguel Menendez



UNDER CONSTRUCTION

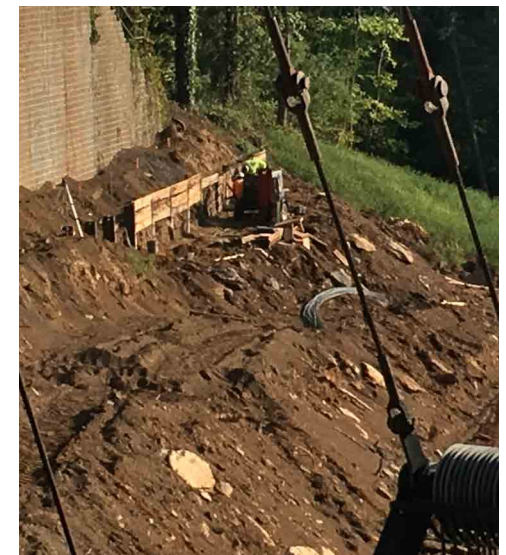
COMMERCIAL RETAIL

PAPPADEAUX'S

- Marietta, GA
- Helical Tieback Repair
- 156 Varying Strength Helical Tiebacks

PROJECT TEAM

Nick Carter
Bill Johnson



UNDER CONSTRUCTION

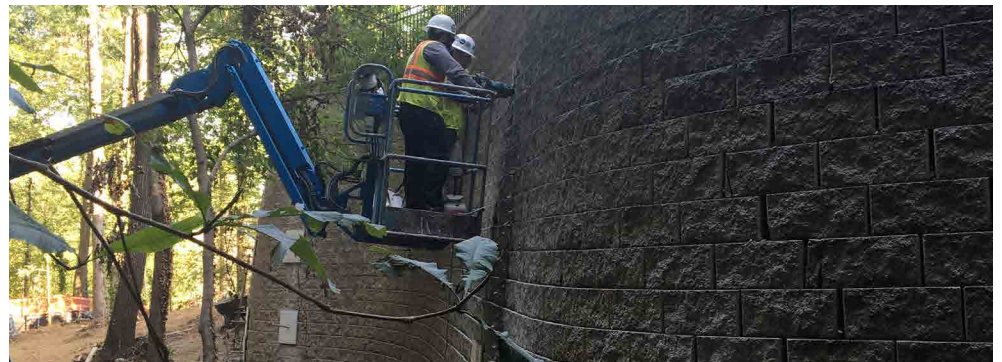
RESIDENTIAL

3990 PINE HILL PLACE

- Atlanta, GA
- Wall Shoring Repair
- 6,000 SF Modular Wall

PROJECT TEAM

Nick Carter
Julio Guzman



UNDER CONSTRUCTION

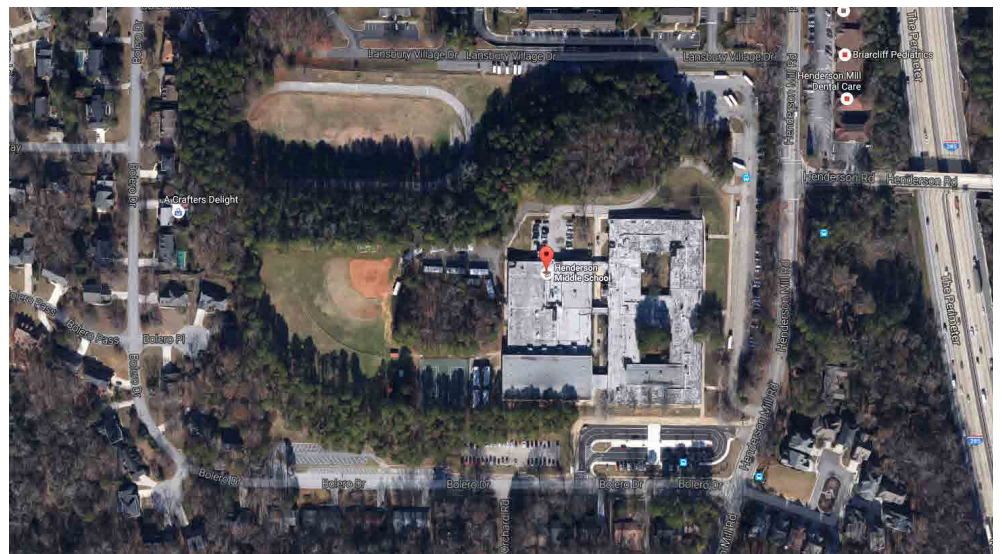
EDUCATION

HENDERSON MIDDLE SCHOOL

- Chamblee, GA
- 9,000 SF Modular Wall - Rockwood Classic
- Excavation & Haul In

PROJECT TEAM

Wilber Martinez
Oswaldo Barrientos



UNDER CONSTRUCTION

COMMERCIAL

UNIVERSAL ALLOY

- Ballground, GA
- Design-Build
- 17,000 SF Modular Wall
- 8,500 SF Gravix Panel Wall

PROJECT TEAM

Wilber Martinez
Oswaldo Barrientos
Miguel Menendez



UNDER CONSTRUCTION

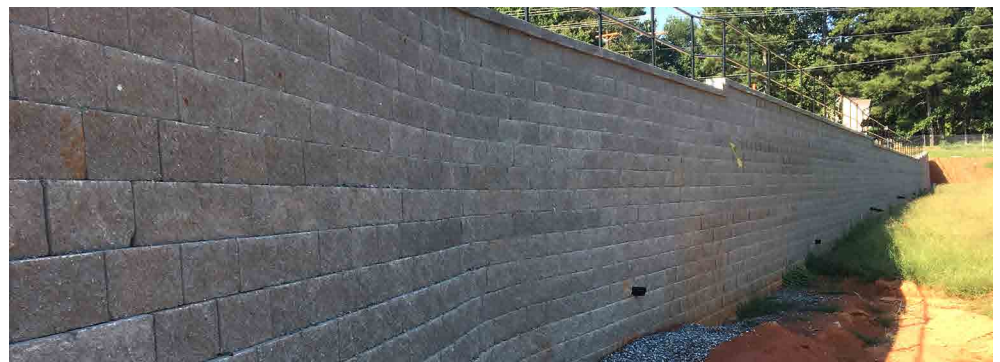
COMMERCIAL

NALLEY NISSAN

- Cumming, GA
- Design-Build
- 14,000 SF Modular Wall

PROJECT TEAM

Wilber Martinez
Cesar Sandoval



UNDER CONSTRUCTION

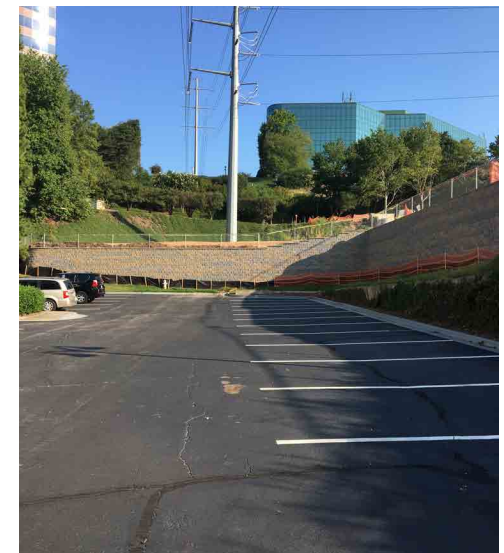
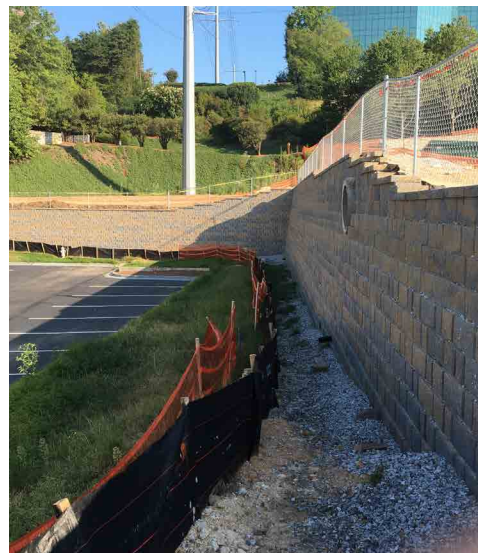
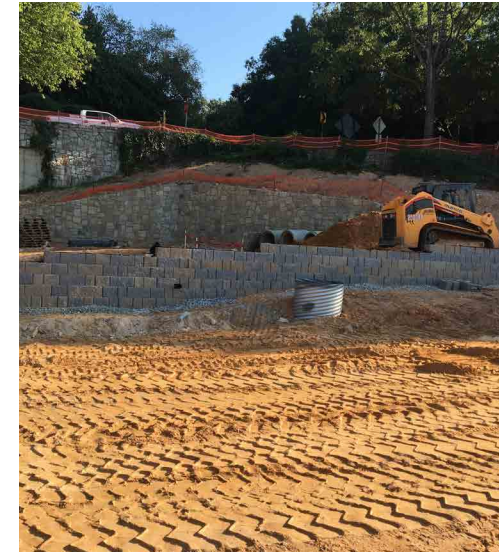
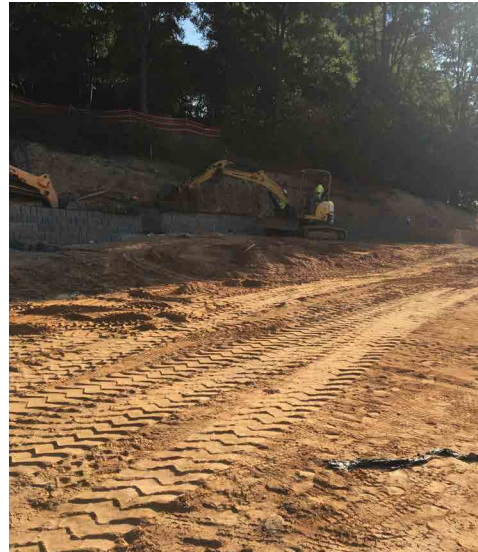
COMMERCIAL

MARRIOTT COURTYARD

- Vinings, GA
- Design-Build
- 8,000 SF Modular Wall - Anchor Diamond Pro

PROJECT TEAM

Wilber Martinez
Miguel Menendez



UPCOMING PROJECTS

CLA ROSWELL

- Roswell, GA
- Soil Nail Walls
- 14,000 SF Modular
- Full Site Package

PALISADES

- Sandy Springs, GA
- 14,000 SF Gravix Wall

ENCORE

- Atlanta, GA
- 7,000 SF Modular Wall on
Top of Soil Nail Wall

CLA JOHNS CREEK

- Alpharetta, GA
- RediRock
- Modular Walls

CLA SUWANEE

- Suwanee, GA
- RediRock
- Modular Walls



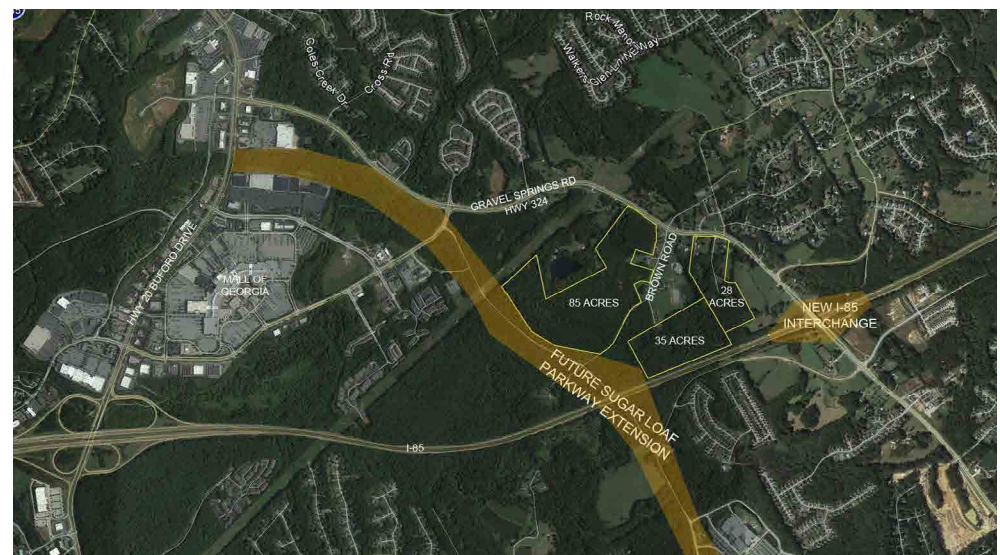
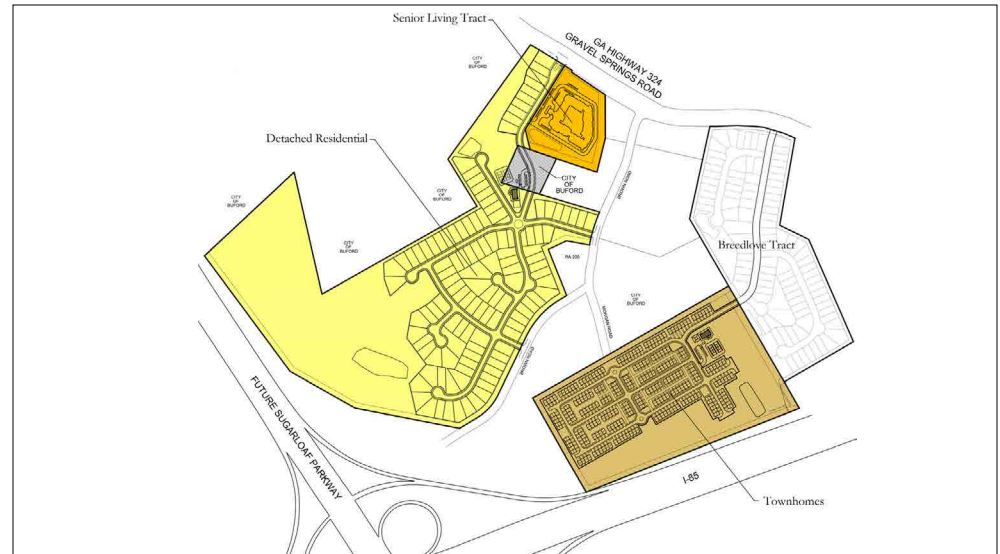
MACALLAN
REAL ESTATE

NEW LISTING

COMMERCIAL

GRAVEL SPRINGS ROAD

- Gwinnett County, Georgia
- 148 Acres
- Townhomes, age restricted single family, traditional single family and senior living facility

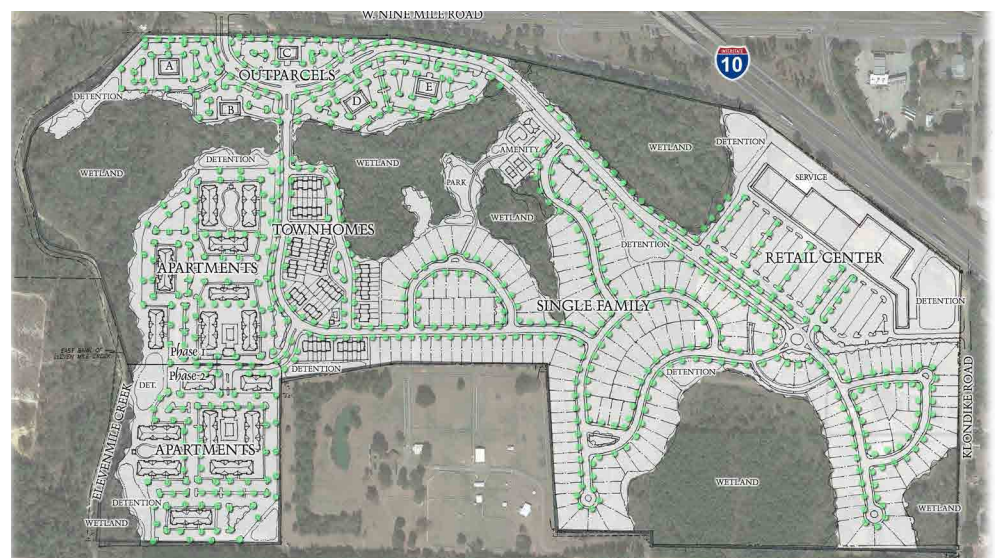
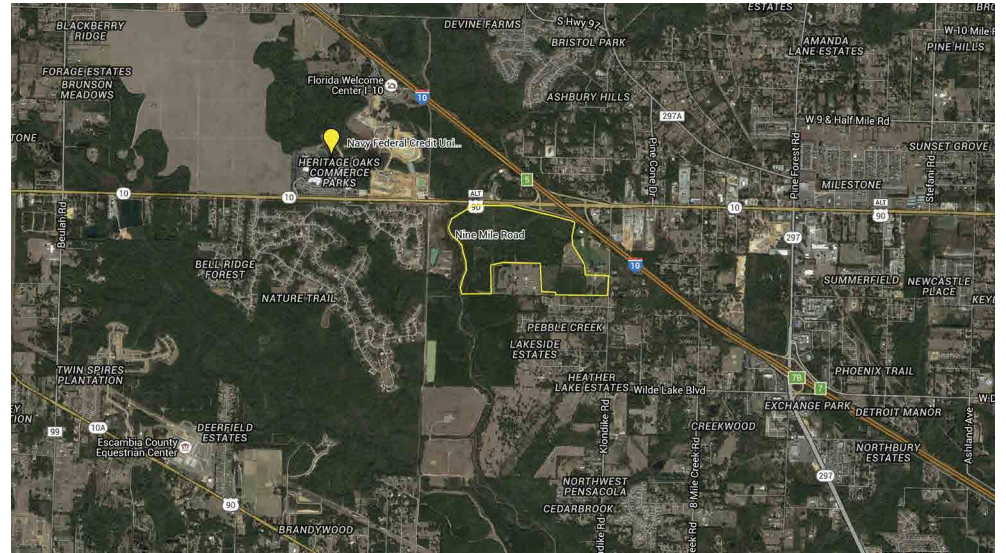


NEW LISTING

COMMERCIAL

EAST RIVER OAKS

- Pensacola, Florida
- 174 Acres
- Retail, single family, townhomes, and apartments

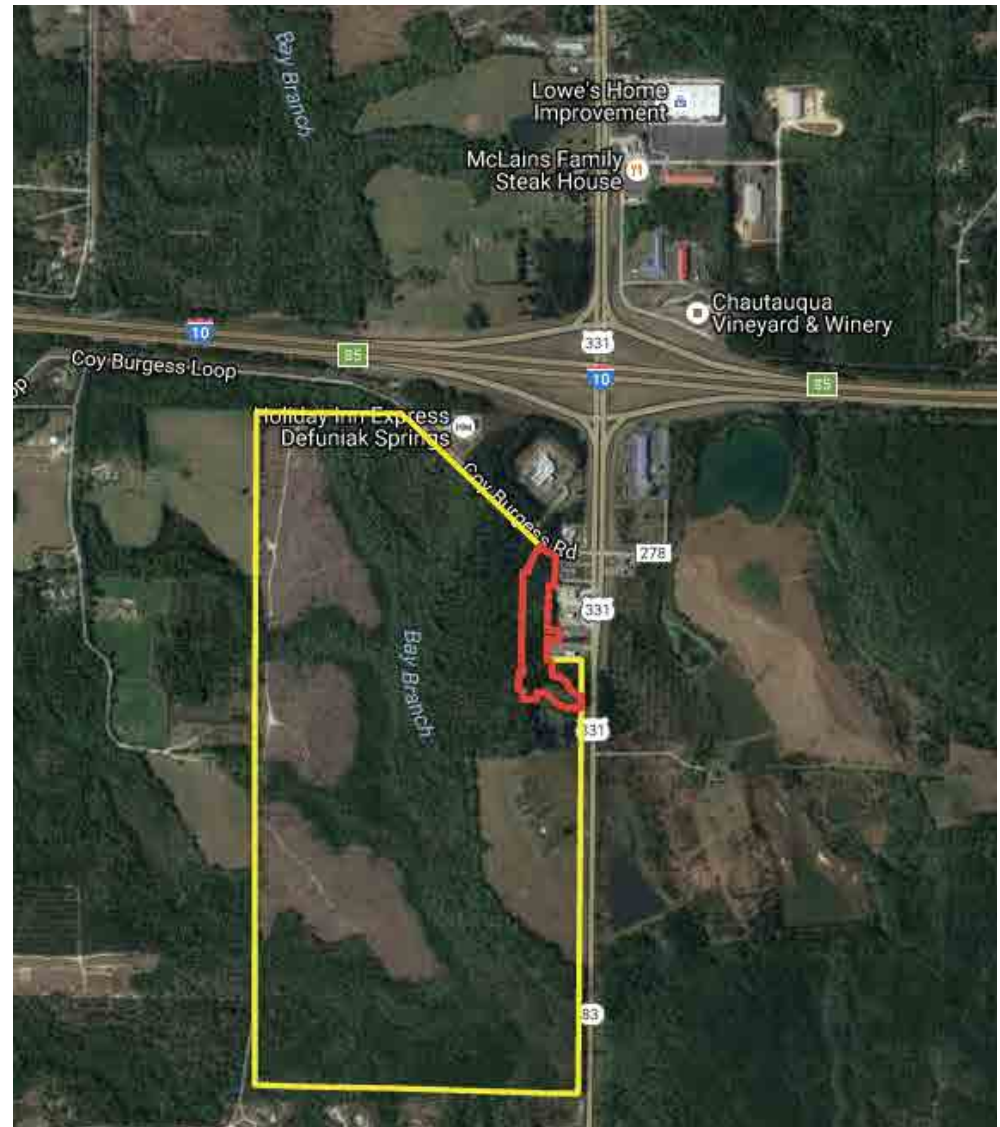


NEW LISTING

COMMERCIAL

BAY SPRINGS

- Defuniak Springs, Florida
- 297 Acres
- Commercial, Retail, and Residential

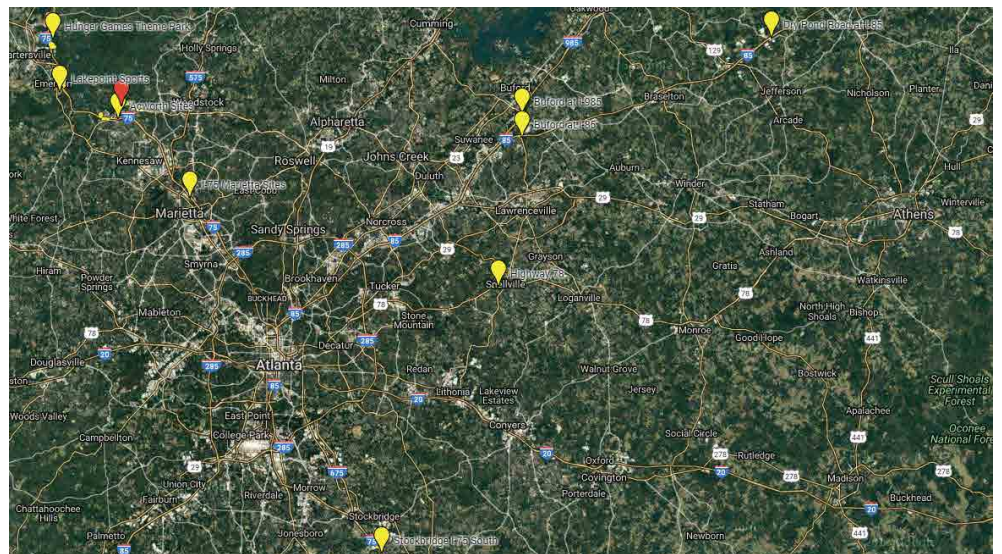


UNDER CONTRACT

COMMERCIAL

WOODSTOCK ROAD

- Cherokee County, Georgia
- RV Land Holdings
- RV Dealership

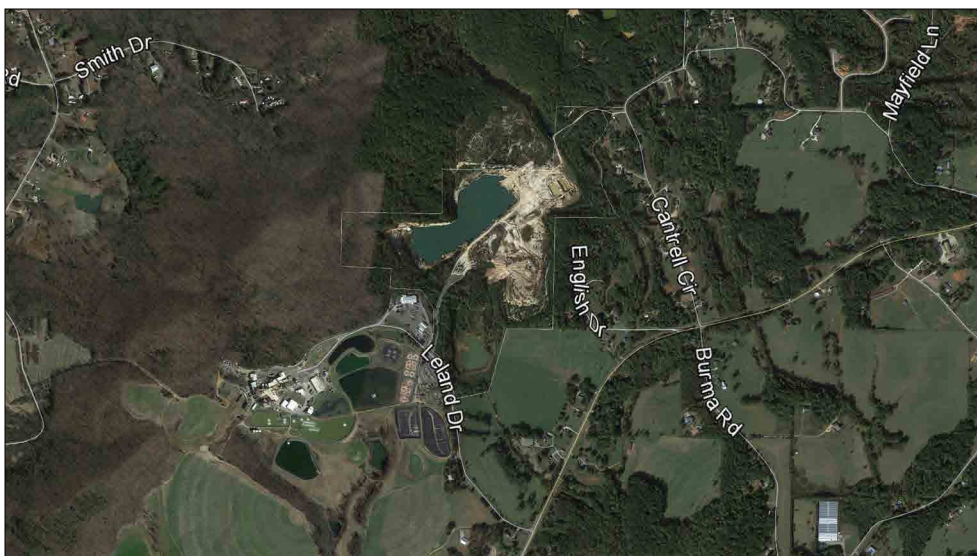
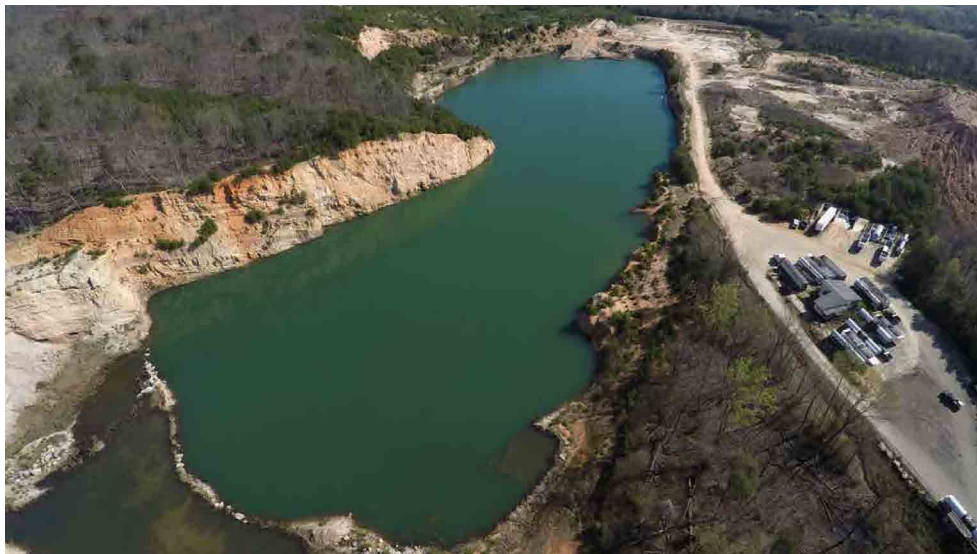


UNDER CONTRACT

COMMERCIAL

BUCKHORN

- Forsyth County, Georgia
- 115 Acres
- Heavy Industrial

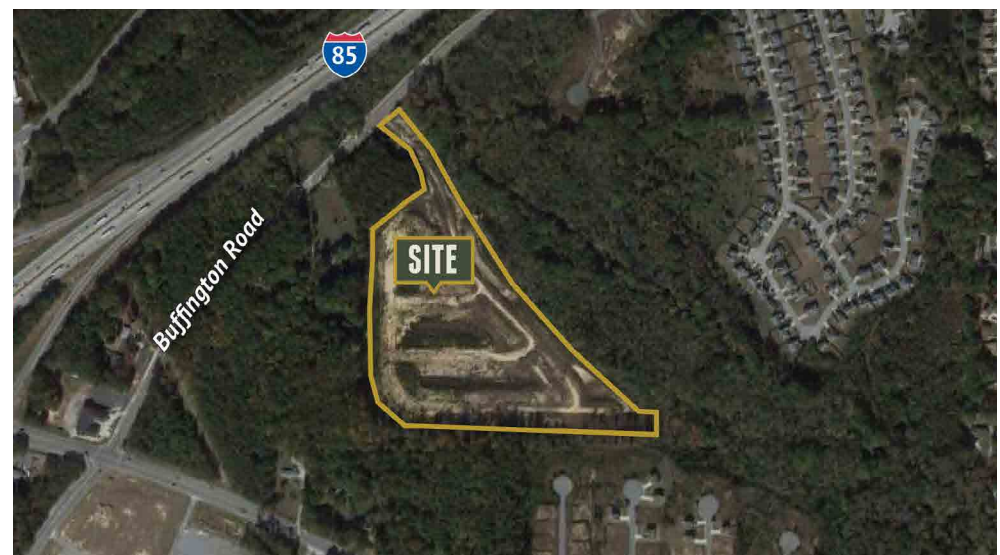
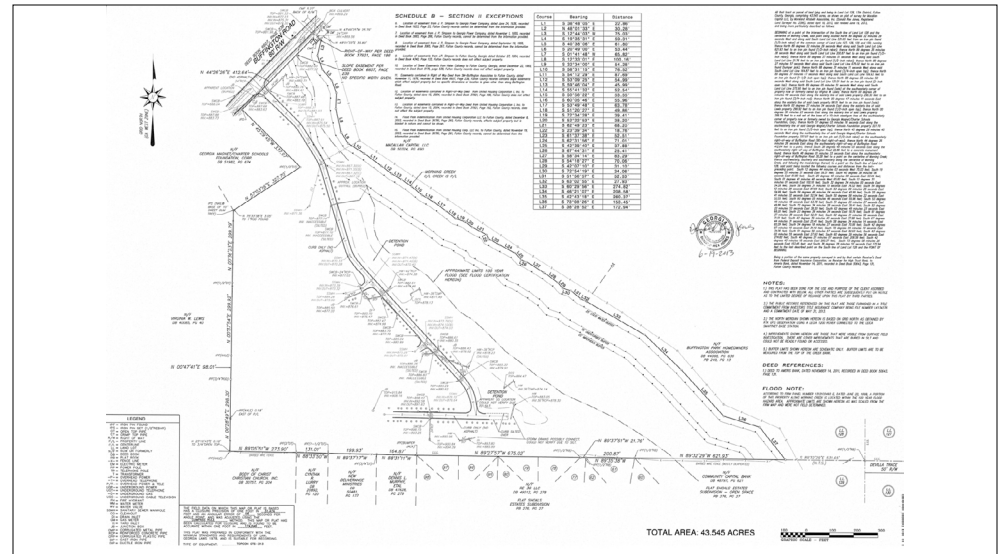


SOLD

COMMERCIAL

BUFFINGTON ROAD

- Atlanta, Georgia
- 43 Acres
- Sold September 2016



SOLD

COMMERCIAL

EMERSON

- Emerson, Georgia
- 11 Lots
- Sold December 2015



2015 - 2016

RESIDENTIAL

2515 BROOKWOOD

- Atlanta, GA
- 1,664 SF Craftsman
- Sold September 2016



GWINNETT NSP

- Gwinnett County contract continuing at a slower pace with no current inventory
- Laurie Collins continuing to handle all acquisitions and dispositions





MACALLAN
CAPITAL

DEVELOPMENT

RANDALL MILL WAY

- Great Buckhead Location
- 6 Acre Assemblage
- 5 individual home sites
- Lots are listed at \$1 Million - \$1.4 Million
- Hired Buckhead Architect Tim Adams to custom design homes for each lot
- Paving is complete and we are getting close to final plat



CONSTRUCTION MANAGER

Jon Shapiro



DEVELOPMENT

MOORES MILL ROAD

- Buckhead
- 7,000 SF Traditional Home
- Speculative home currently under construction by Macallan Homes
- Anticipated Completion - November 2016
- Anticipated List Price - \$1.6 Million



EDINBORO ROAD

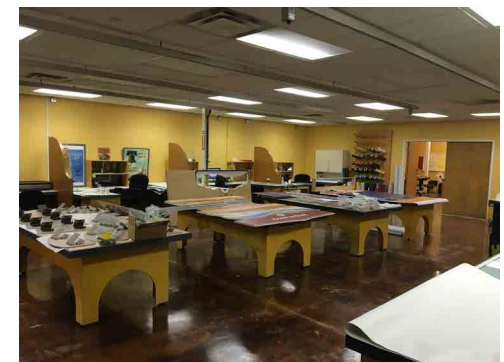
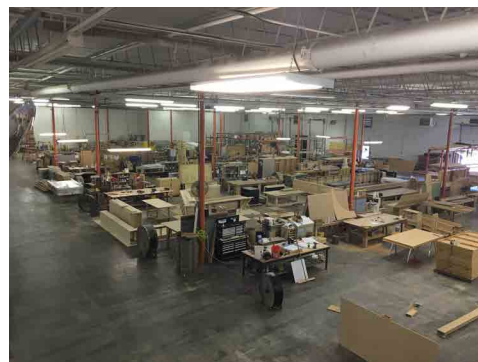
- Buckhead
- 4,797 SF Traditional Home
- Speculative home built by Macallan Homes in 2015
- Sale price was \$1.575 Million



INVESTMENT

2525 PARK CENTRAL

- Decatur, GA
- 51,192 SF Industrial/Flex building
- Construction upgrades/renovations complete
- Tenant moved in April, 2016
- 100% leased to Malone Design/Build for 10 years
- Macallan Capital purchased the building
- Macallan Construction managed landlord renovations
- Macallan Real Estate negotiated building purchase and tenant lease
- Investment Opportunity arose out of Garrison sale to Malone



INVESTMENT

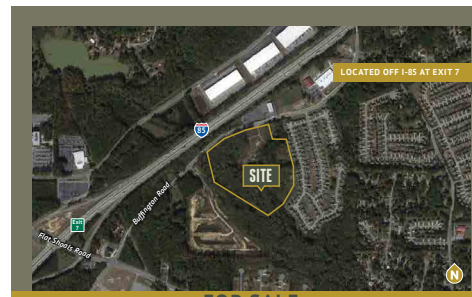
NORTHWEST DRIVE

- Atlanta, GA – West side location in path of progress
- Five Acre raw land purchase purchased at auction
- Buy and Hold Strategy for future development opportunities




BUFFINGTON RD/MORNING CREEK FOREST

- Atlanta, GA – Near Airport along I-85 in South Fulton
- Two Land Tracts purchased at auction in 2011 and 2013
- 34 Acre Townhome Tract and 43 Acre multi-family tract
- 43 Acre Tract re-zoned by Buyer in 2015 to Industrial and sold 9/1/16
- 34 Acre Tract still owned by Macallan for future sale or development opportunity



FOR SALE
MORNING CREEK FOREST
BUFFINGTON ROAD - SOUTH FULTON COUNTY



PROPERTY HIGHLIGHTS

LOCATION: The 14.25 acre subject property is located on the southeast side of Buffington Road north of Fair Shoals Road and just south of Interstate 85 in unincorporated South Fulton County.


FRONTAGE: Approximately 1,100 +/- feet on Buffington Road.

ZONING: The entire tract is zoned TR Conditional for no more than 175 town home units.

ASKING PRICE: \$685,000

COMMENTS: This partially developed property is conveniently located along I-85 directly adjacent to the Union City boundary. The land could potentially be required for industrial or other uses. Phase I currently has 54 developed 20 foot and 22 foot wide town home lots on 13.32 acres. The remaining 20.73 acres has been approved for 93 additional lots.

THE MACALLAN GROUP LLC
542 POWERS FERRY ROAD SE
SUITE 200
MARIETTA, GA 30067
PHONE: (404) 803-8833
FAX: (404) 803-8833



For more info, contact:
JAMES L. RHODEN III
404-803-8833
JRHODEN@MACALLANRE.COM

WWW.MACALLANRE.COM



SOLD
FOR SALE
238 LOT RESIDENTIAL DEVELOPMENT
BUFFINGTON ROAD - SOUTH FULTON COUNTY



PROPERTY HIGHLIGHTS

LOCATION: The 43.5 acre subject property is located on the southeast side of Buffington Road north of Fair Shoals Road and just south of Interstate 85 in unincorporated South Fulton County.

FRONTAGE: Approximately 300+/- feet on Buffington Road.

ZONING: The tract is currently zoned AG for town homes but could also potentially be re-zoned for apartments, single family, or light industrial.

ASKING PRICE: \$870,000

COMMENTS: This partially developed property is conveniently located along I-85 directly adjacent to the Union City boundary. The approved site plan currently includes 235 town homes however the site is entitled for up to 238 units. Development infrastructure including entry, curb, gutter, water, sewer, etc. is approximately 85% complete for the 83 town home lots in Phase I.

THE MACALLAN GROUP LLC
542 POWERS FERRY ROAD SE
SUITE 200
MARIETTA, GA 30067
PHONE: (404) 803-8833
FAX: (404) 803-8833



For more info, contact:
JAMES L. RHODEN III
404-803-8833
JRHODEN@MACALLANRE.COM

WWW.MACALLANRE.COM



CORPORATE PHILANTHROPY

GIVING BACK

ON & OFF SITE PROGRAMS

- 10 hours a calendar year to volunteer
- Your favorite charitable organization or choose one of the corporate sponsorships
- Volunteer in teams or individually
- Year round collections for food and toys

MATCHING GIFT PROGRAM

- Matching employee donations up to \$100 per calendar year to charitable organization

This program is not mandatory but has amazing benefits:

- Connect to others
- Transform our own lives
- Satisfaction, pride, and sense of accomplishment
- Partner with your co-workers for a day of giving back
- Strengthen and be part of your community
- You may find a new interest or hobby!



ATLANTA FOOD BANK

ATLANTA FOOD BANK BY NUMBERS

- More than 1 in every 4 Georgia kids live in food insecure household.
- Each year, an estimated 755,400 (or 1 in 7) people in metro Atlanta and north Georgia turn to Food Bank partner agencies for food.
- 95 cents of every dollar donated to ACFB (including the value of all donated food) goes directly to services in the community to help fight hunger.
- Approximately 1,500 volunteers assist us on a monthly basis, donating more than 9,000 hours per month.

PROJECTS IN NEED OF HELP

- Produce Rescue Center
- Kids in Need
- Community Gardens (groups only)
- Grocery Floor (individuals only)
- Special Events



**ATLANTA
COMMUNITY
FOOD BANK**

End hunger. Grow stronger.



PARTNERS IN EDUCATION

WE SUPPORT BRUMBY

- Reading / Lunch Buddy
- STEM Volunteer
- Career Day
- Field Trip
- Food/Gift Drive
- Service Day
- Macallan is proud supporters of our neighboring school Brumby Elementary. GO BOBCATS!





THE
MACALLAN[®]
GROUP

THE FUTURE

A NEW ADDITION

WELCOME MARGOT!

MARGOT ROENIA AUXIER

- Born at 1:22pm on Tuesday September 6, 2016
- 8 pounds, 4 ounces, and 19 inches
- Mom and baby are healthy and well!





TIME FOR SOME FUN!

Please remember to drink responsibly
and UBER is available for everyone.