



# ANSLEY GOLF CLUB

# MACALLAN STRENGTHS

- Relationship with KDC
- Perfect Project for Macallan
- Occupied Environments
- Creativity & Experience
- Client Focused
- Overall Team Experience





## PROJECT CHALLENGES

Project Schedule

Occupied Environment

Custom Millwork Component

## PROJECT SOLUTIONS

- Schedule Options
- Phasing Options
- Privacy Screening
- Night Work
- Flexibility
- Team Experience
- Subcontractor Relationships

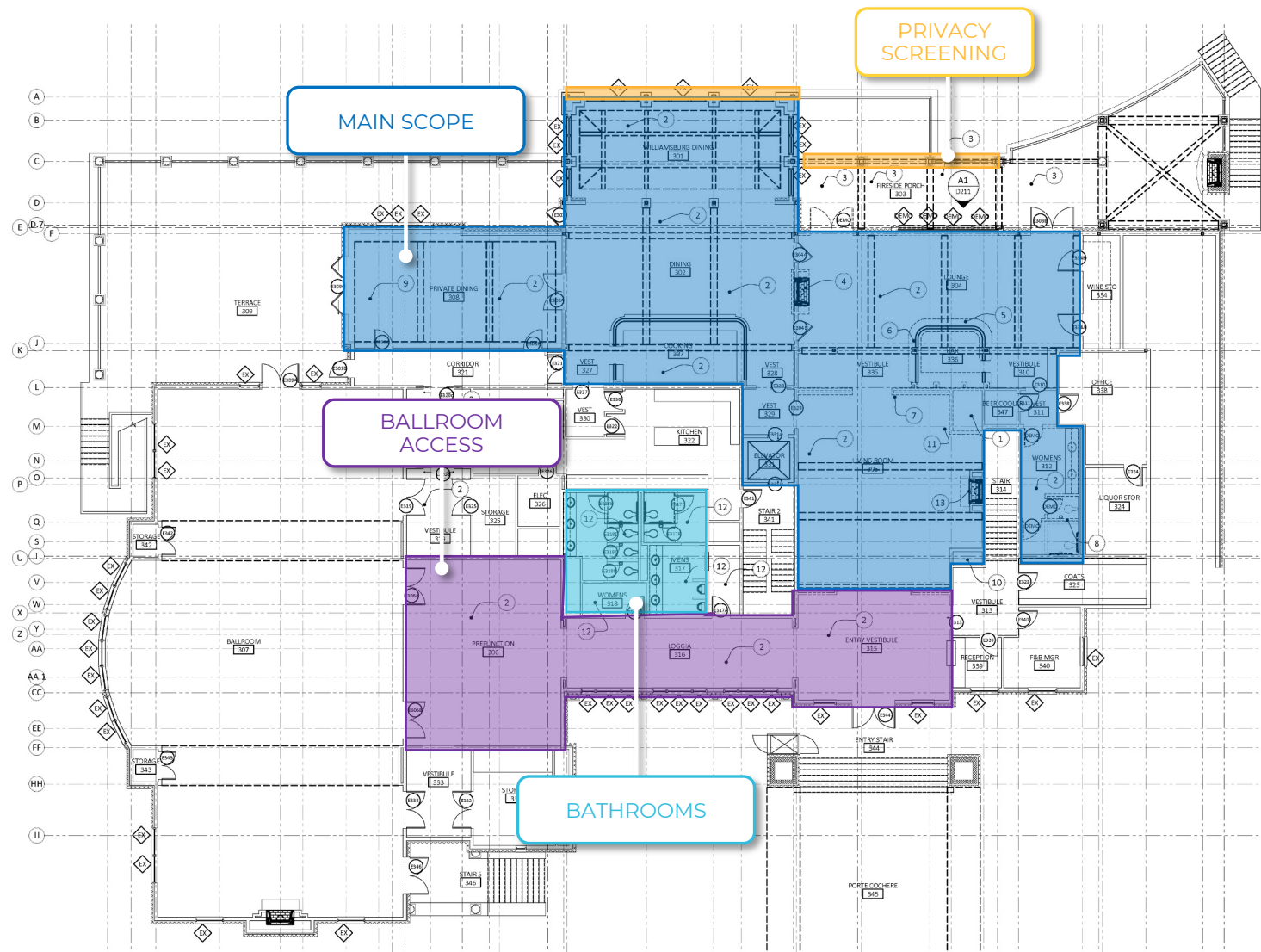


# SUMMARY SCHEDULE

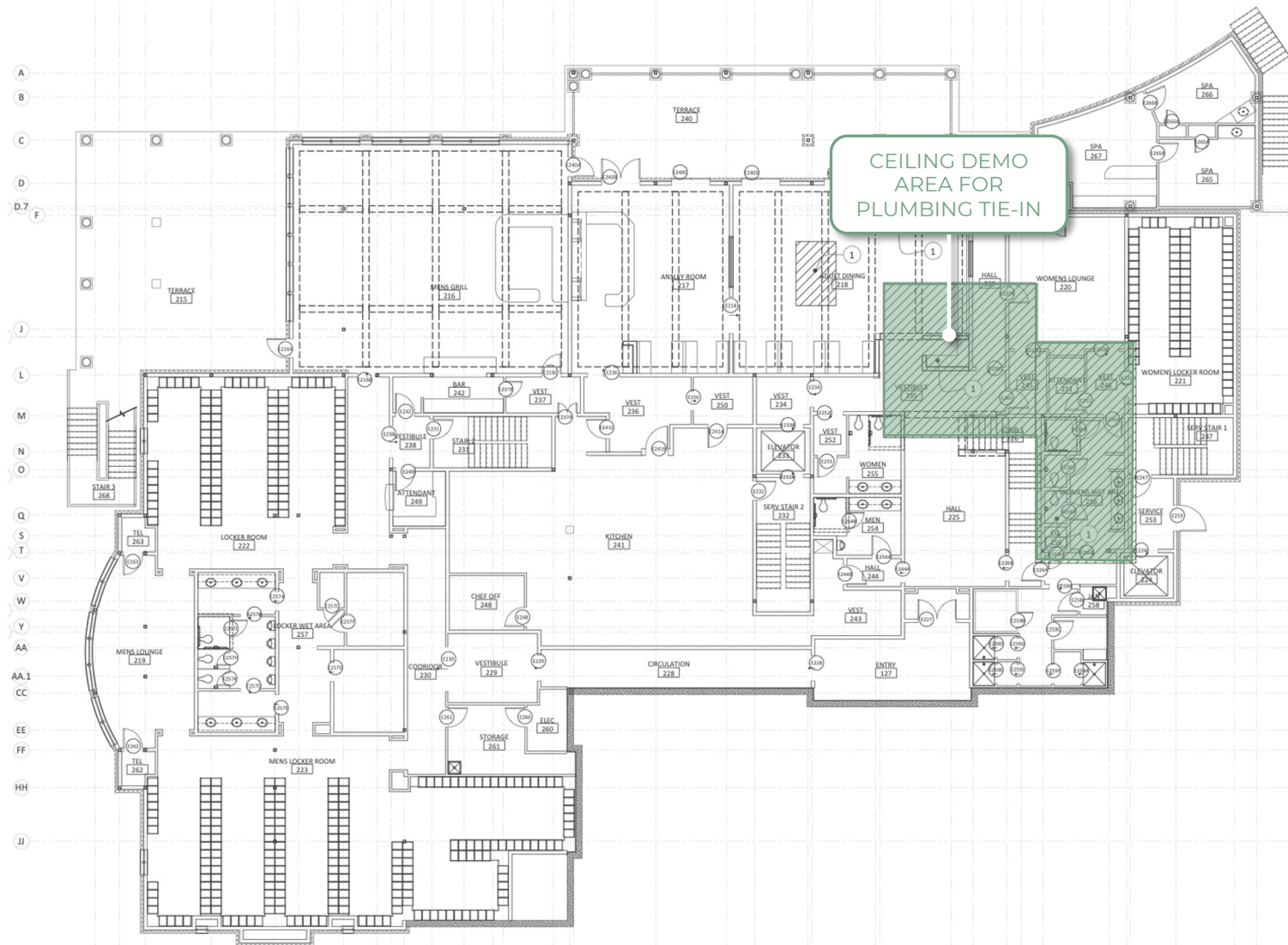


ID	Task Name	Duration	Start	Finish	Mar	Qtr 2, 2024 Apr	May	Jun	Qtr 3, 2024 Jul	Aug	Sep	Qtr 4, 2024 Oct
1	<b>Preconstruction</b>	<b>94 days</b>	<b>Fri 3/15/24</b>	<b>Wed 7/24/24</b>	[Gantt bar from Mar to Jul]							
2	Award	1 day	Fri 3/15/24	Fri 3/15/24	[Gantt bar at start of Mar]							
3	Permit	6 wks	Fri 3/15/24	Thu 4/25/24	[Gantt bar from Mar to Apr]							
5	3rd floor millwork delivery	93 days	Mon 3/18/24	Wed 7/24/24	[Gantt bar from Mar to Jul]							
6	Bathroom tile	63 days	Mon 3/18/24	Wed 6/12/24	[Gantt bar from Mar to Jun]							
7	Pro shop millwork delivery	14 wks	Mon 3/18/24	Fri 6/21/24	[Gantt bar from Mar to Jun]							
8	<b>Construction Duration</b>	<b>92 days</b>	<b>Fri 4/26/24</b>	<b>Mon 9/2/24</b>	[Gantt bar from Apr to Sep]							
9	3rd floor dining and bar	16 wks	Tue 5/14/24	Mon 9/2/24	[Gantt bar from May to Sep]							
10	Second floor ceiling	2 wks	Mon 7/1/24	Fri 7/12/24	[Gantt bar in Jul]							
11	Prefunction	2 wks	Tue 7/16/24	Mon 7/29/24	[Gantt bar in Jul]							
12	Ballroom bathrooms	3 wks	Thu 7/25/24	Wed 8/14/24	[Gantt bar in Aug]							
34	Pro shop	13 wks	Fri 4/26/24	Thu 7/25/24	[Gantt bar from Apr to Jul]							

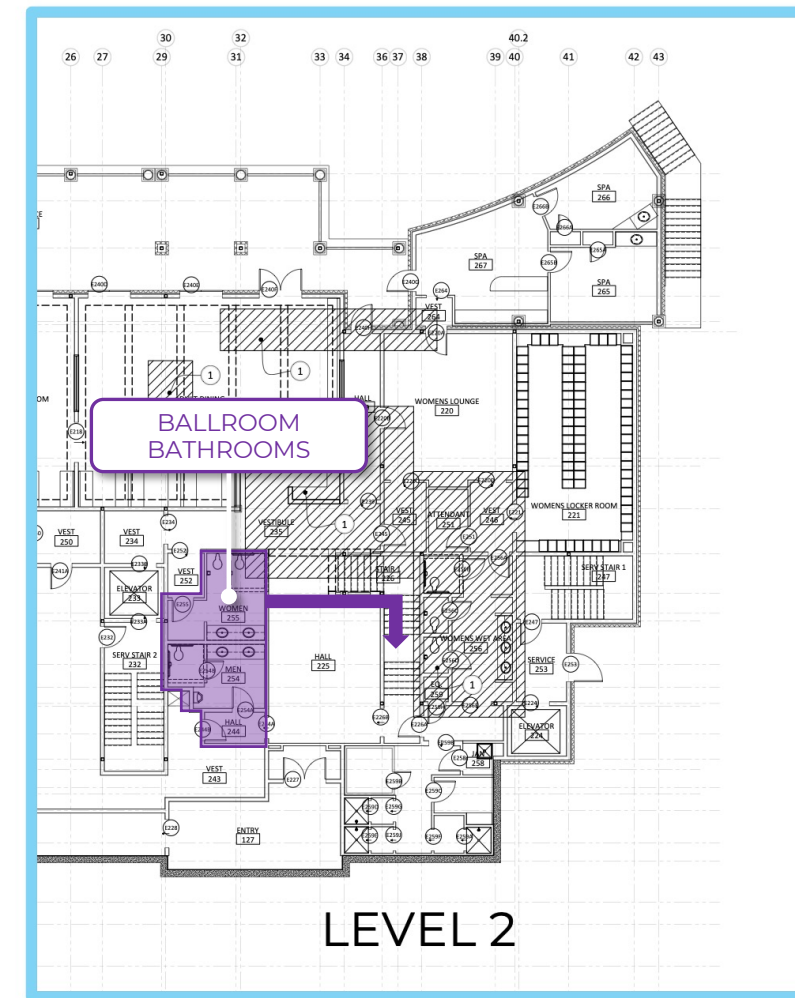
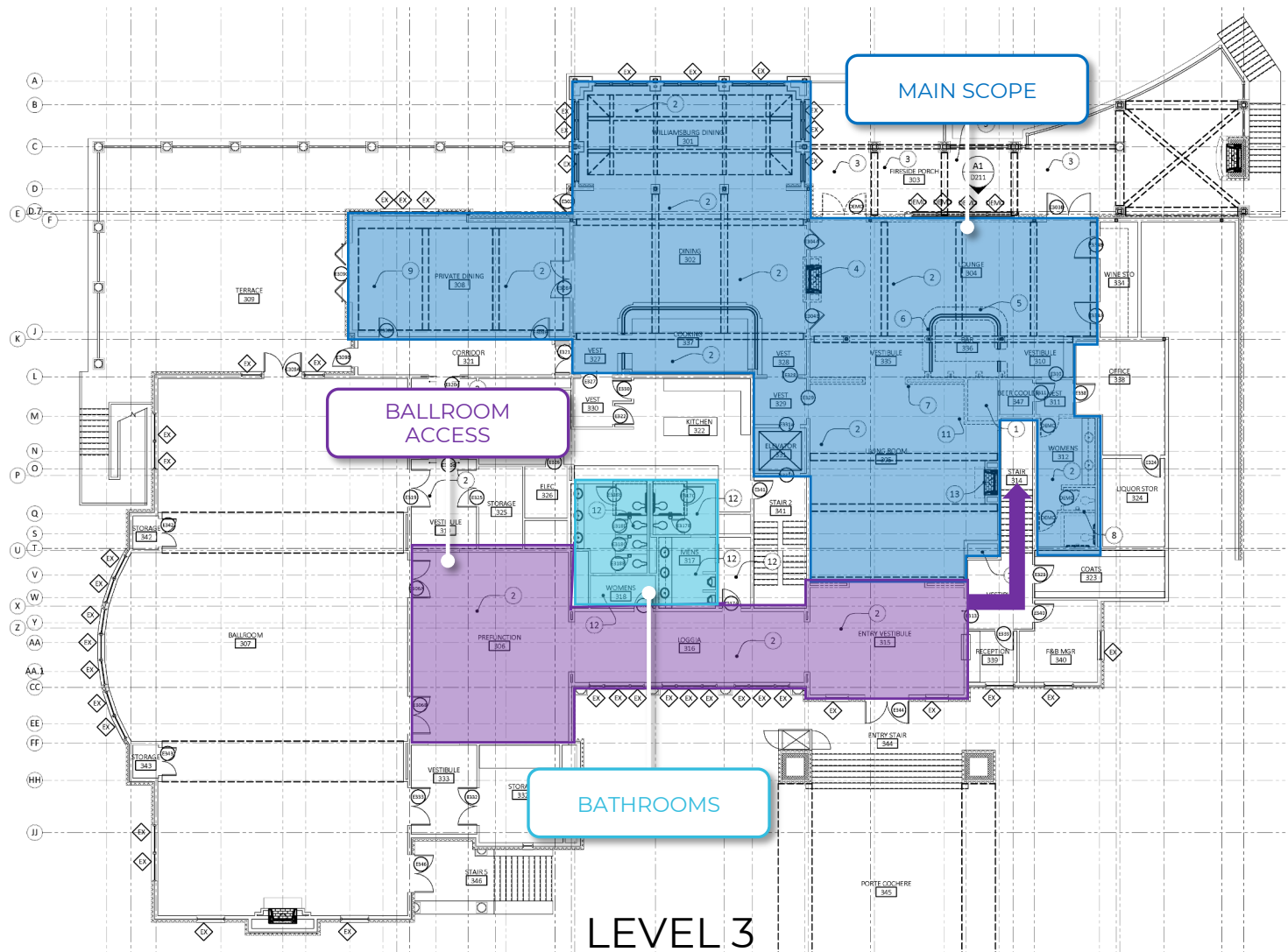
# FLOOR PLAN 3<sup>RD</sup> FLOOR SCOPE OF WORK



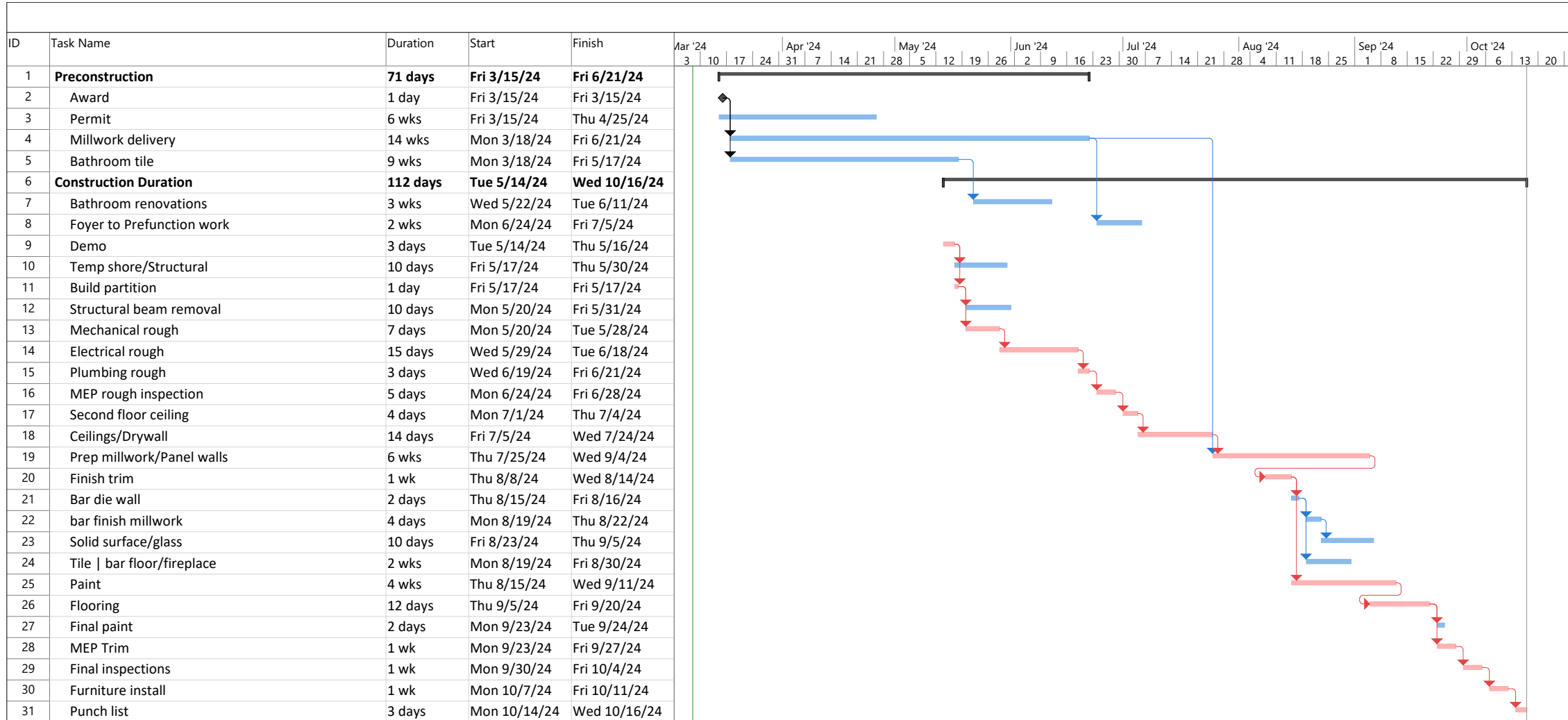
# FLOOR PLAN 2<sup>ND</sup> FLOOR



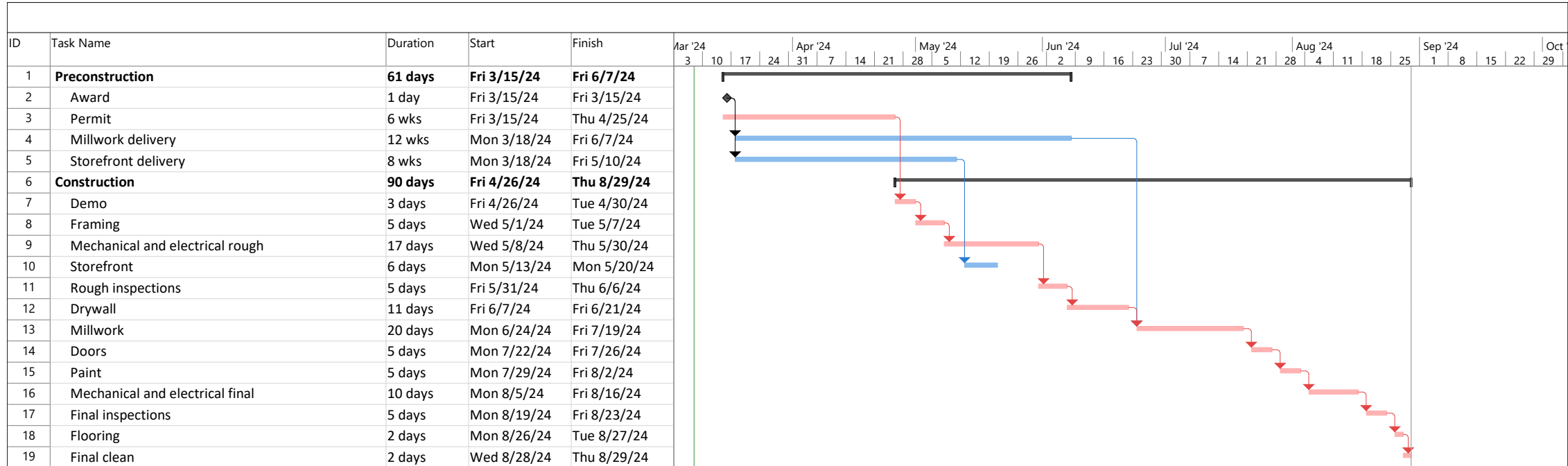
# FLOOR PLAN OPTIONAL PHASE FOR BALLROOM ACCESS



# 3<sup>rd</sup> FLOOR SCHEDULE



# PROSHOP SCHEDULE



OCCUPIED ENVIRONMENTS

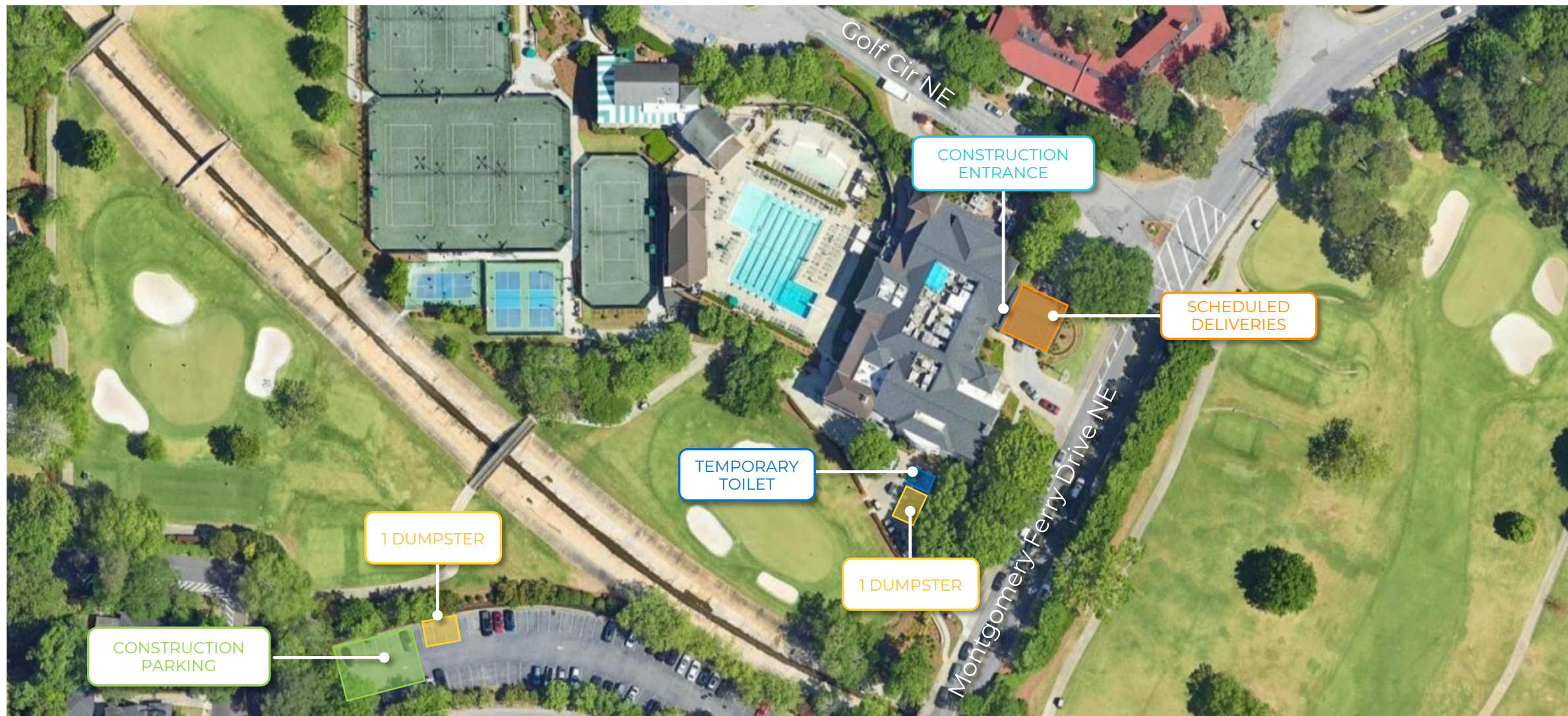


# OCCUPIED ENVIRONMENTS



FULL VIEW

# LOGISTICS PLAN



CUSTOM MILLWORK COMPONENTS



# WHY US?



- Multiple Project Experience with Architect
- Clubhouse & Retail Experience
- Excels at Executing Complex Projects in Occupied Environments
- Adaptability – Able to Work Through Project Challenges
- Facilitates Team Approach
- Integration with Onsite Personnel/Facilities Management
- Sensitivity to Operations/Event Calendar
- Priority Project
- Budget/Cost Control Process



IDEAL PROJECT  
SIZE



SENIOR STAFF  
COMMITMENT



\$40 MILLION  
BONDING CAPACITY



ACCOUNTABILITY &  
COMPREHENSIVE  
RECORD KEEPING



BEST PLACES TO  
WORK FOR THE  
LAST 5 YEARS



WORKING IN TIGHT  
ENVIRONMENTS



EXCELLENT  
SAFETY  
RECORD



SELF-PREFORM  
CAPABILITIES



COMMITMENT TO  
ANSLEY GOLF  
CLUB



ALIGNED CULTURE  
OF TEAMWORK

ONE MORE  
ROUND

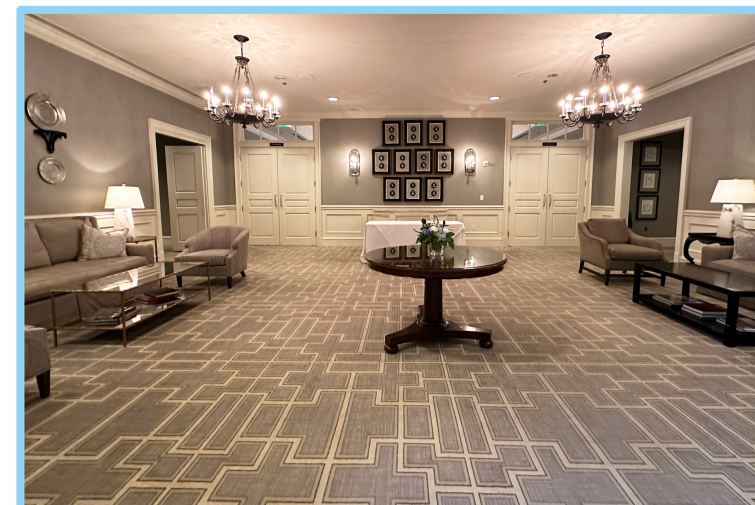
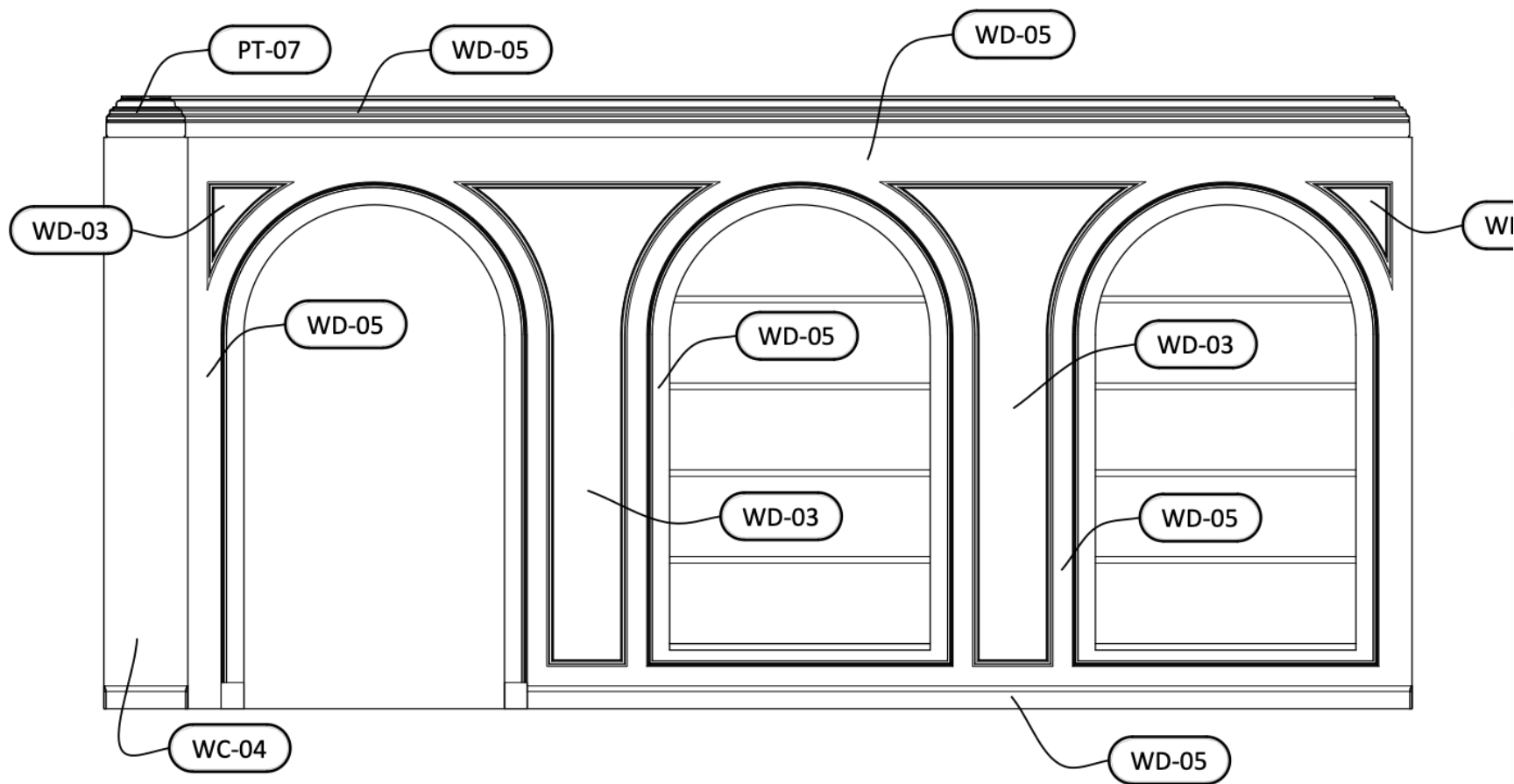
# THANK YOU!



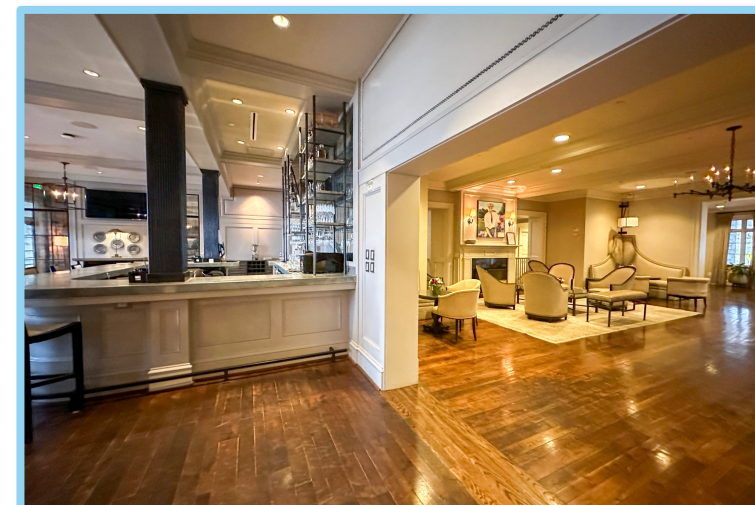
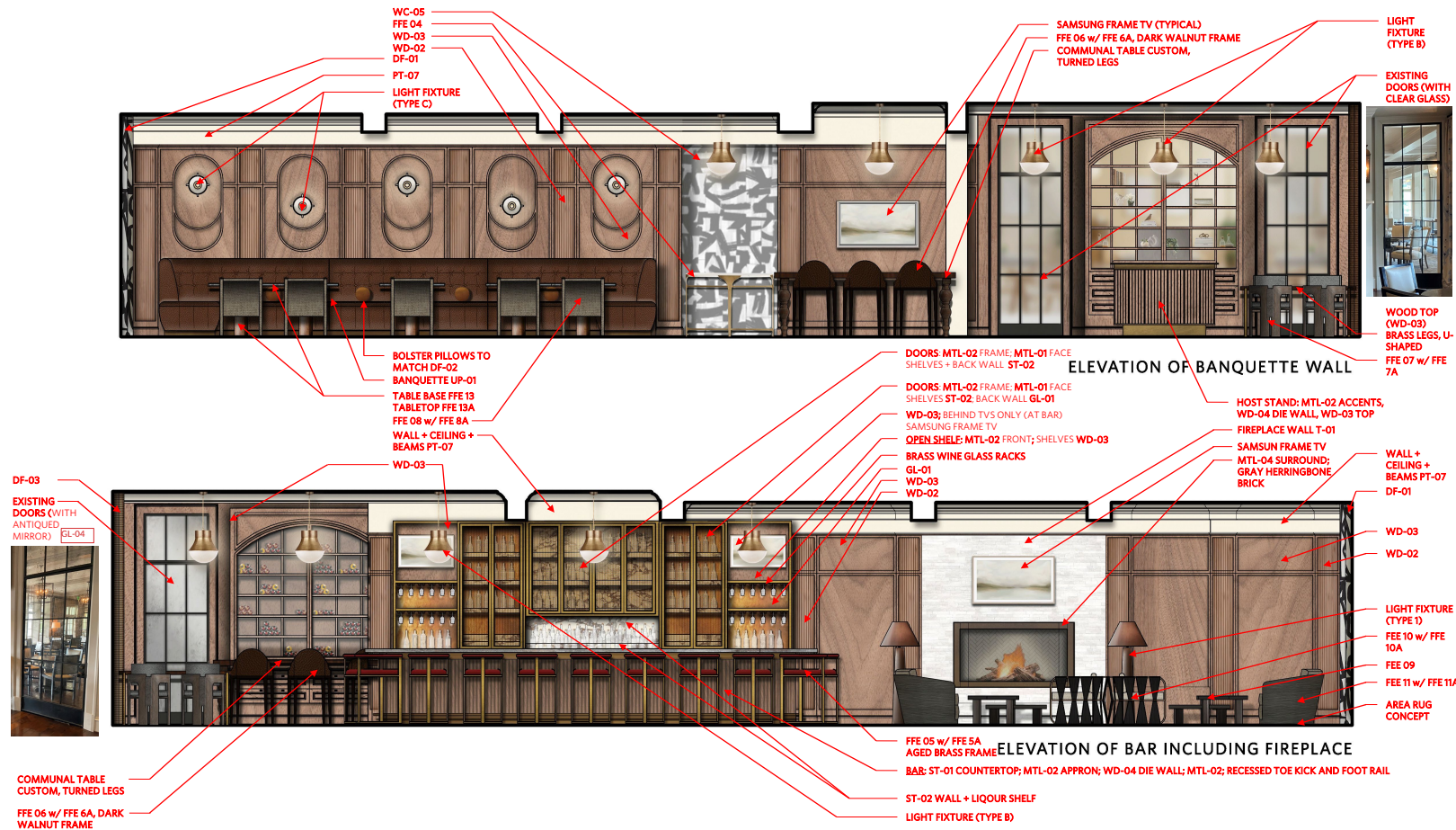
# RENDERING 1912 BAR & LOUNGE



# RENDERING PRE-FUNCTION



# RENDERING BAR





CURRENT BAR



HALLWAY



BAR AREA



CURRENT BAR



BATHROOM



NEW BAR AREA