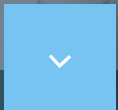




THE
MACALLAN
GROUP

2023
ANNUAL MEETING

Welcome!



Comarkable Wall

Comarkable Wall

Comarkable Wall

Comarkable Wall

Comarkable Wall



MISSION

To improve the quality of life for our people, partners, & clients.

VISION

A portfolio of companies made successful through synergy and empowerment of our people, enabling them to achieve their personal and professional goals.

JAMES L. RHODEN III
Managing Partner

MICHAEL S. MINUTELLI
Managing Partner

DEAN de FREITAS
Managing Partner

CORPORATE SERVICES TEAM



JOHN CLOTFELTER
Chief Financial Officer

ACCOUNTING/FINANCE

SHARON BRAZEAL
Receptionist

MARIKA DASILVA
Senior Corporate Accountant

RENA CRABILL
Internal Auditor

TABITHA DOUGLAS
Staff Accountant

CARRIE WILKINSON
Operations Coordinator

AMBER HATCHER
Administrative Coordinator

BRANDI RAY
Job Cost Accountant

MICHELE L. HARRY
Vice President

MARKETING/HR/ADMIN

BRITTANY WILLIAMS
Human Resource Director

KIRA RAY
Senior Graphic Designer

ASHLYNN LANDRY
Marketing Coordinator

JENNIFER AUXIER
Executive Assistant

JAMES R. BAKER
Vice President

INVESTMENTS



DEAN de FREITAS
Managing Principal

NATHAN HARBISON
Vice President
Operations Manager

BILL TRACY
Vice President
General Superintendent

PRECONSTRUCTION

CHAD RICKS
Senior Estimator

PROJECT MANAGEMENT

KERRI LINSKOTT
Project Manager

JASON WARREN
Assistant Project Manager

BEAU BRYANT
Assistant Project Manager

BRANDI RAY
Job Cost Accountant

SUPERINTENDENTS

TAD GLASSCOCK
Senior Superintendent

BEVAN COBBS
Superintendent

DAVID HOWARD
Construction Manager

COOPER JONES
Construction Manager

MAINTENANCE TEAM

ALFRED CALDWELL
Foreman

OSCAR MEDINA
Field

FIELD EMPLOYEES
3



DAVID CHILDERS
Principal

DANICA BUCKLEY
Operations Manager

JESSICA RODRIGUEZ
Project Coordinator

RACHEL ROUNTREE
Estimator

AMBER HATCHER
Administrative Coordinator

DAVID POCKLINGTON
Construction Manager

JAMES ROBERTSON
Construction Manager

STEPHEN SHELDON
Carpenter

ANTONIO RAMIREZ
Field Labor

COPER RIDLEY
Field Labor

FIELD EMPLOYEES
4



JAMES L. RHODEN III
Managing Broker

HEATH MILLIGAN
Principal

ERIC CLARKSON
Associate Broker

WINSTON SMITH
Associate Broker

BRETT BRADLEY
Sales Associate

WILLIAM MILLER
Real Estate Analyst

REID KNOX
Salesperson

JOHN REX FUQUA
Land Specialist

GEORGE HART
Industrial Specialist

DOUGLAS DAVIDSON
Land Specialist



JAMES L. RHODEN III
Managing Broker

LAURIE COLLINS
Associate Broker

GINA DAVIA
Salesperson

JEANIE JOYE
Salesperson

JOSE NAVARRO
Salesperson

KATIE NOLAND
Salesperson

ASHLEY O'NEIL
Salesperson

MARTIN SPATT
Salesperson



LITEWORKS
WINDOW & DOOR LLC

SCOTT BARR
Principal

PETER MORRISON
Chief Operating Officer

CARRIE WILKINSON
Operations Coordinator

ROB WASSERMAN
Estimator

CARLOS GONCALVES
Purchasing / Inside Sales
Coordinator

JOSE MORALES
Warehouse Manager

CODY CHUPP
Warehouse/Delivery Associate

RANDY CHUPP
Warehouse/Delivery Associate

THOMAS BARR
Warehouse Associate

RONNIE LIPPETT
Outside Sales

KAREN BROWN
Outside Sales

STEVEN FORTSON
Outside Sales

MARK VAN TILBURG
Outside Sales

JEFF GERDES
Independent Sales

CARMEN TORREY
Independent Sales



CLIFF STANFIELD
Principal

CHRISTOPHER WADE
Director of Investments &
Acquisitions

THE POWER OF TEAMWORK

ONE TEAM, ONE GOAL

21

YEARS IN BUSINESS

10

OPERATING COMPANIES

\$67,282,028

OPERATING
REVENUE

92

ASSOCIATES

9

INVESTMENT
COMPANIES

\$14,897,293

INVESTMENT
REVENUE

36

ENTITIES

23

REAL ESTATE
TRANSACTIONS

\$81,614,065

TRANSACTIONAL
VOLUME

THANK YOU
FOR ANOTHER GREAT YEAR



B P t W

BEST PLACES TO WORK



6TH YEAR IN A ROW

Comfortable Encouraging Calm

Professional Ca

OPERATING COMPANIES





THE
OMNI



GEORGIA STATE
LIBRARY



CHASTAIN
HORSE PARK



POWDER
SPRINGS



GOOD GAME

A blue rectangular graphic containing the Macallan Construction logo, which consists of two white triangles forming a stylized 'M'. To the right of the logo, the text "THE BATTERY" is written in a white, sans-serif font. Below the logo, the words "MACALLAN CONSTRUCTION" are written in a smaller, white, sans-serif font.



THE VOID



GARDEN & GUN CLUB



VIETVANA



PONCE
CITY MARKET



NAN'S ROTISSERIE CHICKEN



EAST PASSAGE STAIRWELL



SPICEWALLA



KOREAN NIGHT MARKET




MACALLAN
CUSTOM HOMES

MIDDLETON
RESIDENCE

ATLANTA
HOMES
LIFESTYLES





MCCRORY
RESIDENCE



POPP
RESIDENCE

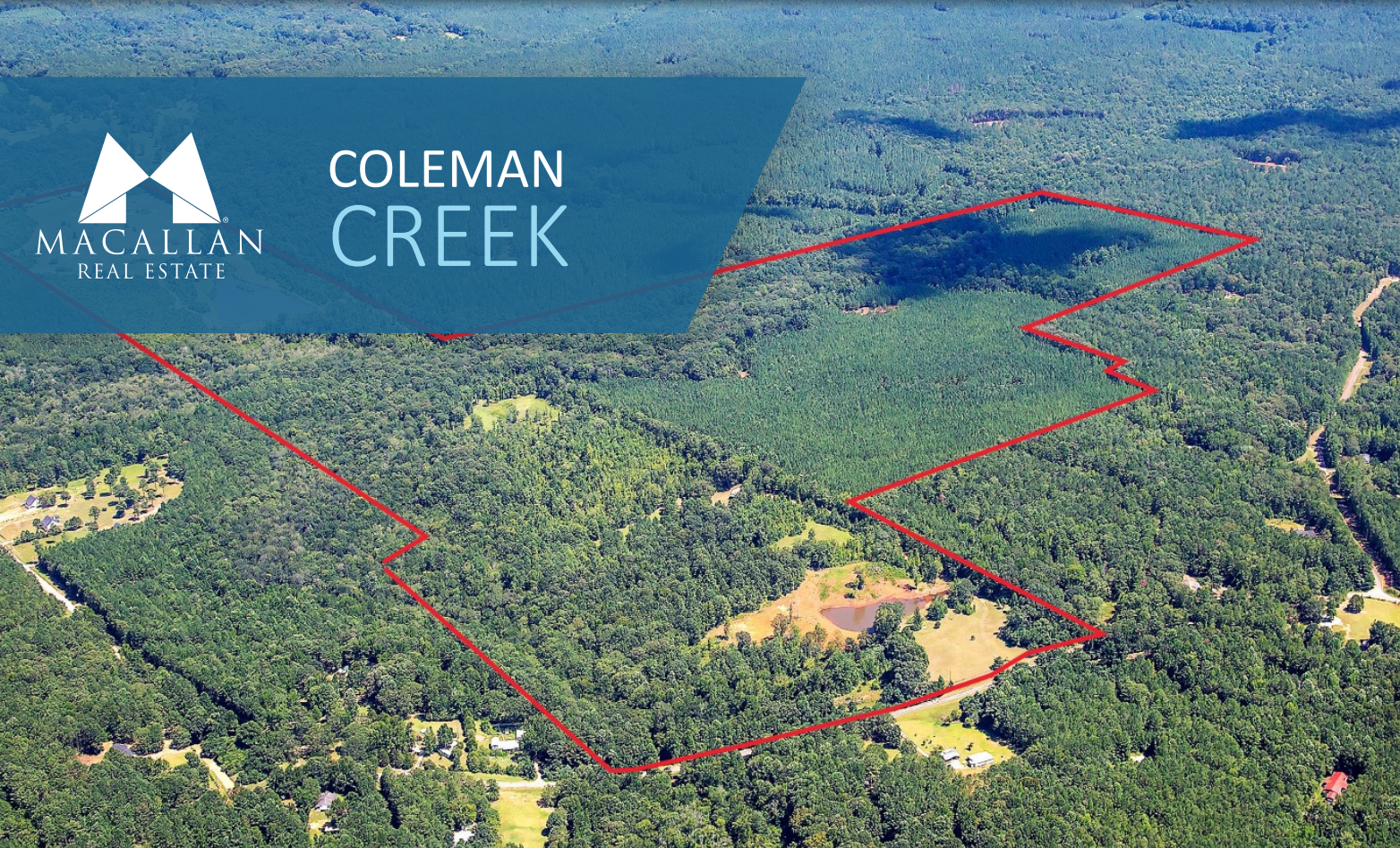



MACALLAN
CUSTOM HOMES

ST. SIMONS
RESIDENCE



COLEMAN CREEK





RIVER PINES





BENTON GROVE





HWY 92 PARCELS





INDUSTRIAL STORAGE





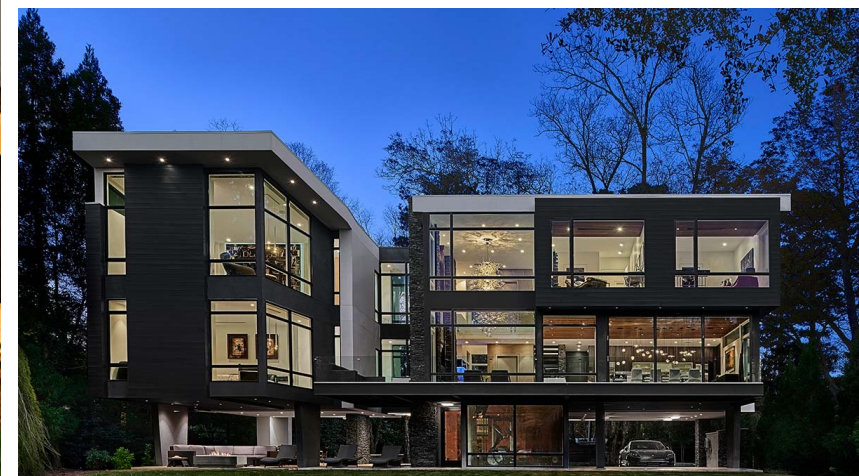


LITEWORKS™
WINDOW & DOOR, LLC

OLMSTEAD & BAXLY SAVANNAH



VININGS RESIDENCE





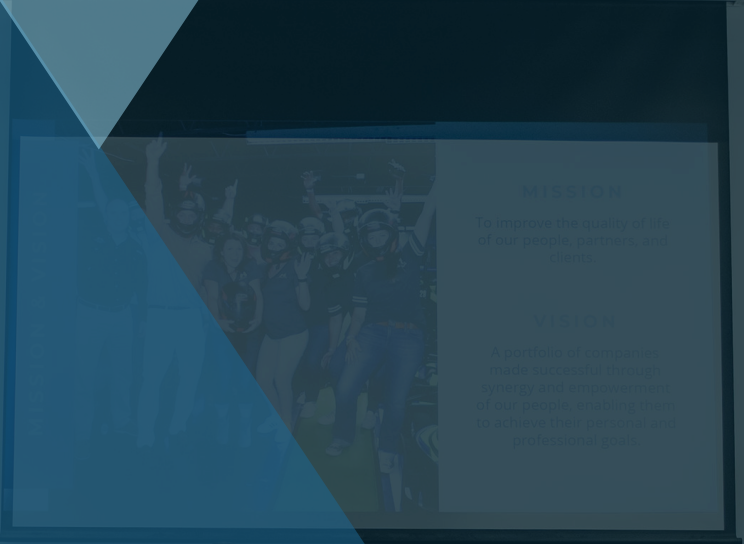
LITEWORKS™
WINDOW & DOOR, LLC

LOT 1
RANDALL MILL




LITWORKS™
WINDOW & DOOR, LLC

BUTCHER
& BAKER



MISSION
To improve the quality of life
of our people, partners, and
clients.

VISION
A portfolio of companies
made successful through
systems and implementation
of our people, and ability
to achieve the goals of our
partners and clients.



MACALLAN
CAPITAL





PARIAN RIDGE





GLEN
DEVON



RANDALL
MILL





PACES
WALK



RENTAL
PROPERTIES

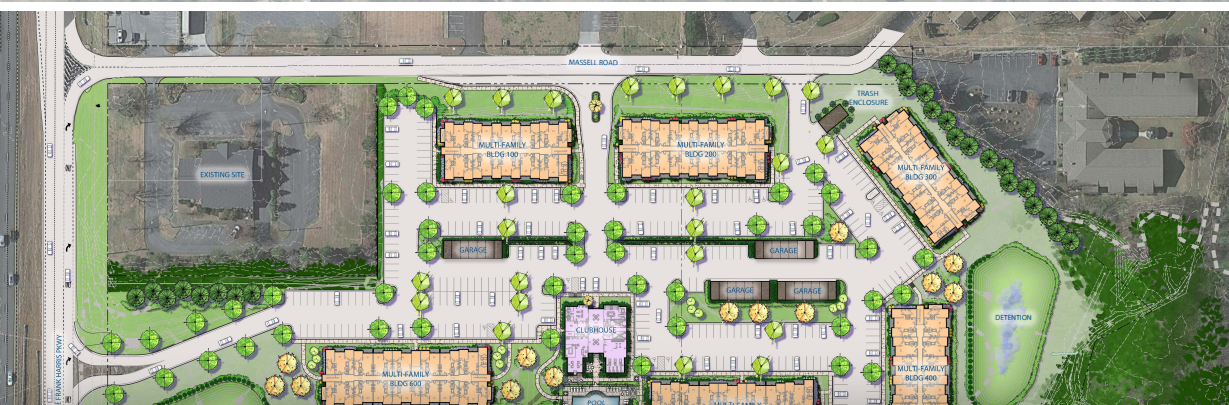
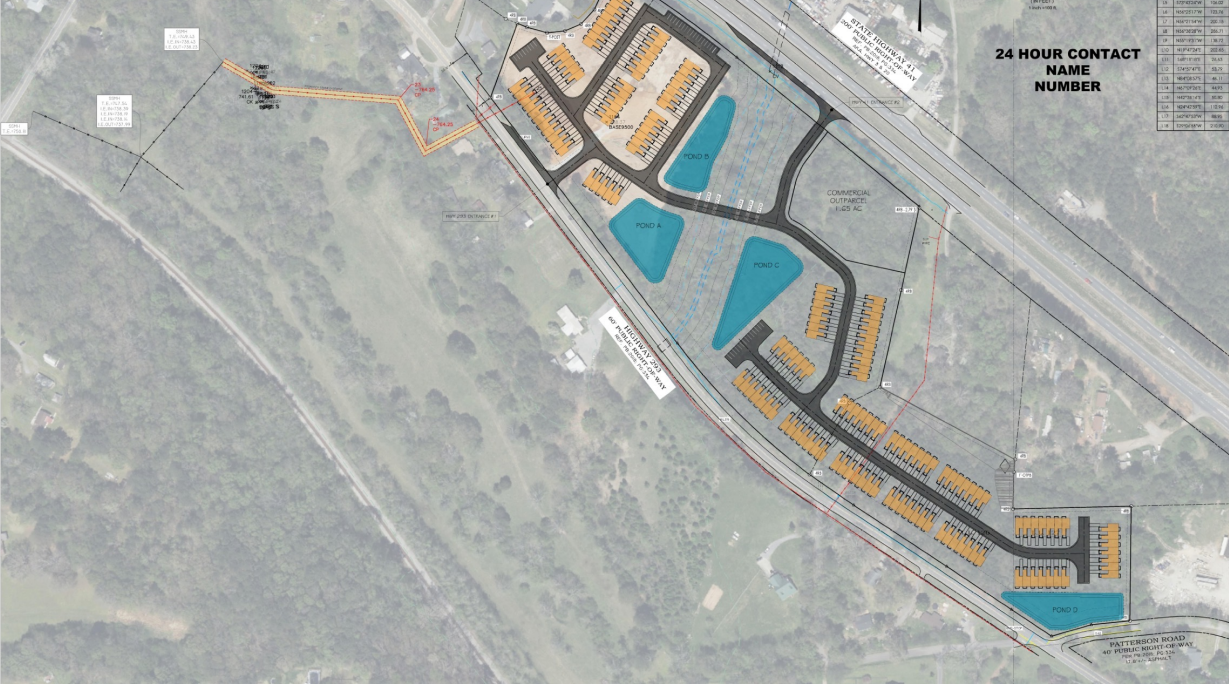








LONGLEAF
BEE CAVE



SUMMARY

37.7 ACRES ZONED C-1
 114 Single family
 Pond 6.2 acres

MACALLAN CAPITAL

LAND INVESTMENT



Thank You For Your Attention!