



COTTAGE CONSTRUCTION AT THE SPIRES AT BERRY COLLEGE

SEPTEMBER 19, 2018



THE SPIRES
AT BERRY COLLEGE



MACALLAN
CONSTRUCTION

A MARRIAGE OF COMMERCIAL, RESIDENTIAL & SENIOR LIVING



Macallan is a relationship based company and a large part of the success experienced to date is attributable to our strategy of forming long term relationships with select clients. We believe strongly in a team approach and offer transparency to clients which they appreciate. At the end of the day, our job is to bring the project in on or under budget and on or ahead of schedule. That is what we strive for and by consistently achieving those goals for our clients, we are able to earn repeat business.

Our areas of expertise include: senior/assisted living facilities, multi-family, higher education (Georgia Institute of Technology, Georgia State University, Emory University, Albany Technical College and Kennesaw State University), clubhouses, historic restoration, medical office, parks and recreation, and office tenant improvements, as well as non-profit and public projects.

MACALLAN TEAM

JAMES L. RHODEN III
Managing Principal

MICHAEL S. MINUTELLI
Managing Principal

DEAN de FREITAS
Managing Principal

CORPORATE SERVICES TEAM

VICKI MITCHELL
Corporate Controller

ACCOUNTING/FINANCE

REBECCA DINOFF
Project Accountant

TINA CANTRELL
Staff Accountant

MARIKA DASILVA
Senior Corporate Accountant

RENA CRABILL
Internal Auditor

JODENE VASQUEZ
Accounts Payable Clerk

LISA VO
Junior Accountant

ROBIN KAITZ
Receptionist

TABITHA DOUGLAS
Staff Accountant

MICHELE L. HARRY
Vice President

MARKETING/HR/ADMIN

BRITTANY WILLIAMS
HR Manager

MORGAN HALL
Graphic Designer

JENNIFER AUXIER
Executive Assistant



CHRISTIAN JACOBSEN
Vice President

FIELD

BILL TRACY
General Superintendent

TAD GLASSCOCK
Superintendent

SHANE JONES
Superintendent

JOE GUY
Superintendent

TERRY ANNISE
Assistant Superintendent

JAMES JONES
Assistant Superintendent

PROJECT MANAGEMENT

NICHELLE BELL
Project Administrator

JACKIE MCGARITY
Project Manager

KERRI LINSCOTT
Assistant Project Manager

JOHN MCHUGH
Assistant Project Manager

JASON STOLZ
Assistant Project Manager

PRECONSTRUCTION

CHRISTIAN DAVIS
Director of Preconstruction

ANNA LILLEY
Estimator



NATHAN HARBISON
Director

ROB WASSERMAN
Chief Estimator

COURTNEY EDWARDS
Project Coordinator

DAVID HOWARD
Construction Manager

DAVID PARKER
Construction Manager

DAVE ROLLISON
Assistant Superintendent

WILL ANDERSON
Assistant Superintendent

OSCAR MEDINA
Field Labor



DAVID CHILDERS
Principal

GABE JOHNSON
Vice President

DANICA BUCKLEY
Project Coordinator

CHRIS KEITH
Estimator

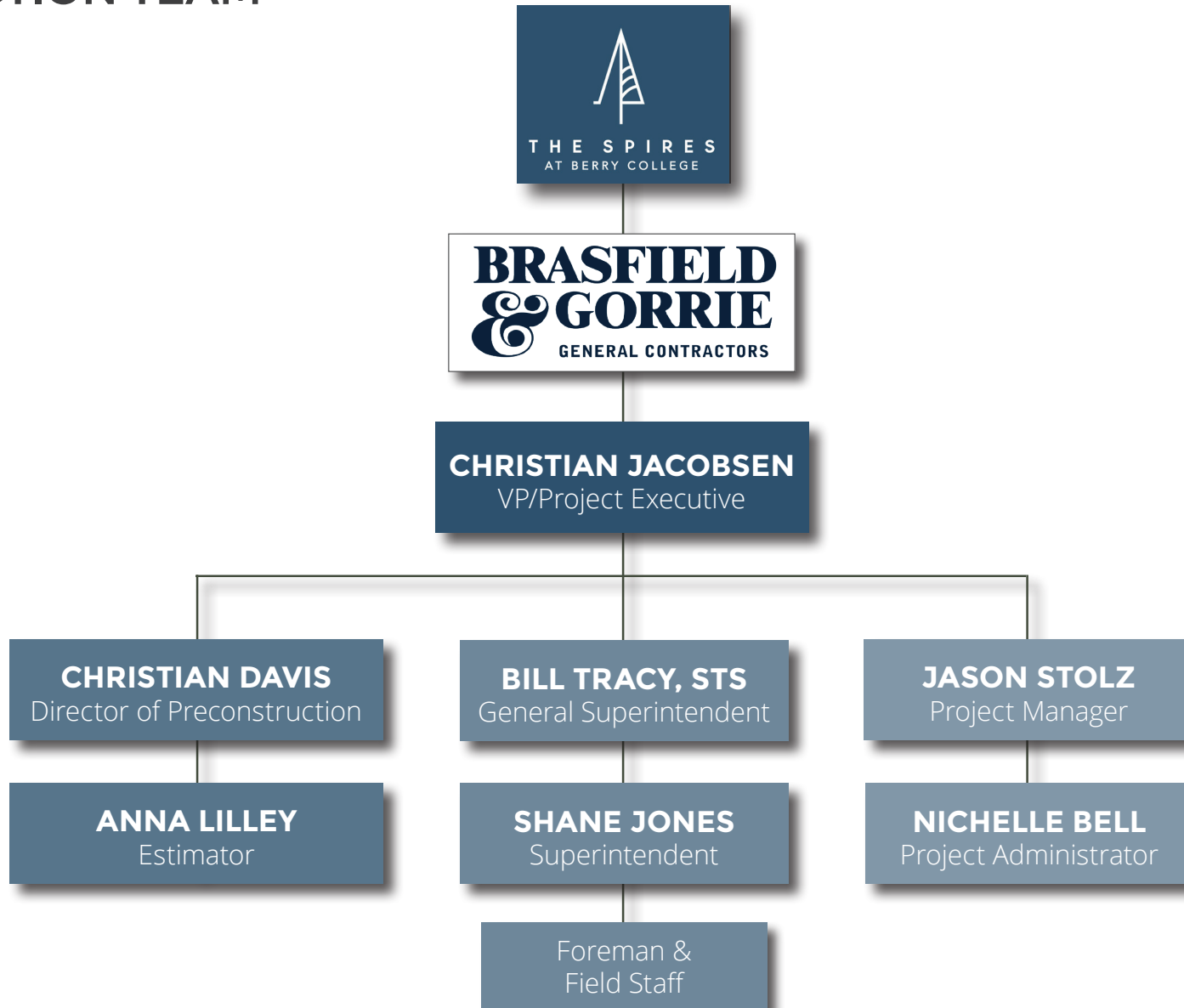
STEVE HOWSON
Construction Manager

CRAIG SMITH
Construction Manager

TAYLOR WEST
Construction Manager

FIELD EMPLOYEES
5

CONSTRUCTION TEAM





THE SPIRES
AT BERRY COLLEGE



MACALLAN
CONSTRUCTION

PROJECTS WITH BRASFIELD & GORRIE



**BRASFIELD
& GORRIE**
GENERAL CONTRACTORS





THE SPIRES
AT BERRY COLLEGE



MACALLAN
CONSTRUCTION

ASSISTED LIVING PROJECT EXPERIENCE



STERLING ESTATES OF EAST COBB

Marietta, Georgia

PROJECT DESCRIPTION (Completed)

- New Construction of 36,000 SF of multiple independent living units
- Wood frame construction
- Exterior skin of brick and stone
- Exterior elevated concrete decks
- Residential finishes
- Worked on multiple units concurrently
- *Project Value \$8M*



THE SPIRES
AT BERRY COLLEGE



MACALLAN
CONSTRUCTION

ASSISTED LIVING PROJECT EXPERIENCE



CANTERBURY COURT

Atlanta, Georgia

PROJECT DESCRIPTION (Ongoing)

- 300 unit, occupied, multi-building, high rise retirement community.
- Demolition and interior renovation of over 150 different projects that include residential units as well as lobby, kitchen and exterior renovations.
- Managed significant logistical challenges with major renovations in an operational facility.
- *Total completed to date in excess of \$10M.*



THE SPIRES
AT BERRY COLLEGE



MACALLAN
CONSTRUCTION

ASSISTED LIVING PROJECT EXPERIENCE



DISCOVERY VILLAGE AT SUGARLOAF

Suwanee, Georgia

PROJECT DESCRIPTION (Completed)

- New construction of a 20,000 SF 2-story, 24-unit independent living addition to the existing building.
- 6,800 SF renovation of the Cafe, Bistro, Library & Mailroom.
- New paint and flooring in the memory care unit.
- *Project Value \$3M*

ASSISTED LIVING PROJECT EXPERIENCE



COBBLESTONE AT PARK SPRINGS

Stone Mountain, Georgia

PROJECT DESCRIPTION (Ongoing)

- Renovate and modify nearly the entire 40,000 SF senior living facility while occupied with residents.
- Renovation includes 63 individual units, all common area spaces and the addition of two full kitchens and a covered patio in the courtyard.
- Modify and relocation of MEP.
- *Project Value \$3M*

ASSISTED LIVING PROJECT EXPERIENCE



PEACHTREE HILLS PLACE

Atlanta, Georgia

PROJECT DESCRIPTION (Starts Fall 2018)

- New construction of 12 independent living cottages.
- High-end finishes to match Buckhead neighborhood.
- Created specifications book for client.
- *Project Value \$10M*

ASSISTED LIVING PROJECT EXPERIENCE



ALTO BY ALLEGRO SENIOR LIVING (3 PROJECTS) Atlanta, Marietta, Alpharetta, Georgia

PROJECT DESCRIPTION (Ongoing)

- **Buckhead:** 35,000 SF renovation of 23 residential units and all common areas.
- **Marietta:** 10,000 SF renovation of all common areas.
- **Alpharetta:** 19,000 SF renovation of all common areas and one residential unit.
- *Project Value \$3.4M*



THE SPIRES
AT BERRY COLLEGE



MACALLAN
CONSTRUCTION

RESIDENTIAL DEVELOPMENT



HARMONY ON THE LAKES

Canton, Georgia

PROJECT DESCRIPTION

- Harmony on the Lakes is a mixed-use master planned community located in the city of Holly Springs in Cherokee County is comprised of 25,000 SF of retail, 1,800 homes and a 38 acre lake in the center of the community where residents can enjoy fishing, canoeing and feeding the wildlife.
- Macallan developed and built the 30 townhomes and 18 single family detached cottages in South Harmony.

RESIDENTIAL DEVELOPMENT



THE BRICKS HISTORIC ROSWELL

Roswell, Georgia

PROJECT DESCRIPTION

- The original structure was built in 1838 and served as a hospital during the Civil War. It featured a designation as the oldest apartment building in the United States and originally housed mill workers near the Roswell Mill. Macallan worked closely with the Owners and the Roswell Historical Preservation Commission to develop a plan that preserved the integrity of the original Bricks structure while re-purposing the building for 21st century tenants. Macallan was recognized with a Contractor of the Year Award for Historical Preservation from the National Association of the Remodeling Industry.
- 9 Custom Townhomes



THE SPIRES
AT BERRY COLLEGE



RESIDENTIAL DEVELOPMENT



RANDALL MILL WAY

Atlanta, Georgia

PROJECT DESCRIPTION

- Randall Mill Way is an enclave of five pristine one-acre custom home sites accessible from a new cul-de-sac off of Randall Mill Road.
- Located between West Paces Ferry and Mt. Paran Road, these large private lots are in one of the most sought after locations in Buckhead.
- T.S. Adams Studio is the architect designing all of the custom homes.
- *Total Project Value \$20M*



THE SPIRES
AT BERRY COLLEGE



LUXURY CUSTOM HOME BUILDER



Over the past decade, Macallan Custom Homes has established itself as an elite, award-winning builder and is proud to have been named top residential remodeling contractor for the last five years by the Atlanta Business Chronicle.





THE SPIRES
AT BERRY COLLEGE



LUXURY CUSTOM HOME BUILDER





THE SPIRES
AT BERRY COLLEGE



MACALLAN
CONSTRUCTION

LUXURY CUSTOM HOME BUILDER





THE SPIRES
AT BERRY COLLEGE



LUXURY CUSTOM HOME BUILDER





THE SPIRES
AT BERRY COLLEGE



WE UNDERSTAND BEAUTIFUL DETAILS





THE SPIRES
AT BERRY COLLEGE



MACALLAN
CONSTRUCTION

ESTABLISHED QUALITY OF WORK FOR REPEAT CLIENTS



Georgia
Tech





THE SPIRES
AT BERRY COLLEGE



MACALLAN
CONSTRUCTION

ESTABLISHED QUALITY OF WORK FOR REPEAT CLIENTS



Georgia State
University



WHY MACALLAN

- Project Team has Assisted Living Construction Experience
- Relationship with Brasfield & Gorrie
- Safety/Risk Management Program/Culture
- Past Successes Working In Campus Environments
- Integration with Facilities Personnel
- Large Project Jobsite Coordination
- Cost saving analysis - we know How to Protect the Owners Wallet
- Owner Engagement throughout the entire Project
- Effective Communicators
- 2018 Best Places to Work!
- Experience/Understanding of Customization Process