



**2017
ANNUAL
MEETING**

POWER OF TEAMWORK

LOOK AT THESE NUMBERS

\$50M
REVENUE

125
EMPLOYEES

8
COMPANIES

15
YEARS IN
BUSINESS

THANK YOU
for a great year!

2017 ANNUAL MEETING



JAMES L. RHODEN III
Managing Principal

MICHAEL S. MINUTELLI
Managing Principal

DEAN de FREITAS
Managing Principal



MICHELE L. HARRY
Vice President

CORPORATE SERVICES TEAM

PROGRAM MANAGEMENT

ASHISH BAGLE
Project Manager

ESTIMATING

CHRISTIAN DAVIS
Director of Preconstruction

ROB WASSERMAN
Chief Estimator

CHRIS KEITH
Estimator

ANNA LILLEY
Estimator

MARKETING/HR/ADMIN

MORGAN HALL
Graphic Designer

BRITTANY THOMPSON
HR Generalist

JENNIFER AUXIER
Executive Assistant

ACCOUNTING/FINANCE

VICKI MITCHELL
Controller

TABITHA DOUGLAS
Accounting Manager

MILISSA DOUGLAS
Assistant Controller

RENA CRABILL
Internal Auditor

REBECCA DINOFF
Project Accountant

TINA RATCLIFF
Payroll Specialist

JODENE VASQUEZ
Accounts Payable Clerk

ALLISON MCLAUGHLIN
Receptionist/Admin



DEAN DE FREITAS
Principal

NATHAN HARBISON
Director, Special Projects

BILL TRACY
General Superintendent

STEVEN LINTON
Senior Project Manager

DAVID HOWARD
Construction Manager

JACKIE MCGARITY
Project Manager

ALLAN WILLOUGHBY
Superintendent

KERRI LINSOTT
Assistant Project Manager

BRIAN BOZARTH
Superintendent

JAMES JONES
Project Engineer

TAD GLASSCOCK
Superintendent

JOHN MCHUGH
Project Engineer

SHANE JONES
Superintendent

NICHELLE BELL
Project Administrator

TERRY ANNISE
Assistant Superintendent

YVENARDE SEMEXAN
Operations Intern

DAVE ROLLINSON
Foreman



DAVID CHILDERS
Principal

GABE JOHNSON
Vice President

STEVE HOWSON
Construction Manager

CRAIG SMITH
Construction Manager

DANICA BUCKLEY
Project Administrator

FIELD EMPLOYEES
6



JAMES L. RHODEN III
Managing Broker

HEATH MILLIGAN
Principal

RESIDENTIAL

LAURIE COLLINS
Associate Broker

MARTIN SPATT
Salesperson

GINA DAVIA
Salesperson

ASHLEY O'NEIL
Salesperson

KATIE ZEGARELLI
Salesperson

COMMERCIAL

TBD
Land Specialist



BILL JOHNSON
Principal

MARTY RAMSEY
Vice President of Construction

SCOTT MCELROY
Estimator/Project Manager

AUSTIN HARVEY
Office Engineer

WILBER MARTINEZ
General Superintendent

NICK CARTER
Project Manager

DARRIN DAVIS
Foreman

GAIL JORDAN
Office Administrator

FIELD EMPLOYEES
23



SCOTT BARR
Principal

PAM JONES
Sales Coordinator

KAREN BROWN
Sales

OUTSIDE SALESMAN (UV)
17



AMIT KUMAR
Managing Principal

LISA ROLF
Vice President, Operations

ROY CARNES
Vice President, Sales

PAUL JONES
Chief Software Architect

WAYNE VAN VOORHIS
Senior Software Engineer

NAR KASALA
Senior BizTalk Developer

BRAD RICKETSON
Lead Software Engineer

PRATISHTHA PAINULY
Senior Programmer Analyst

PETER CODRINGTON
Senior Programmer Analyst



CLIFF STANFIELD
Principal

A YEAR IN REVIEW

2016 - 2017

- 23 new team members
- The Macallan Group 15 Year anniversary celebration
- Braemar Partners launch (January 2017)
- Braemar Partners Liberty Park development
- Major Macallan Construction project wins: GT Task Order, GSU Task Order, Alpharetta Arts Center, Westminster Presbyterian Church
- Five year anniversary for Global Stability
- Global Stability purchased a tractor trailer and large excavator
- Aidant Technologies completed an implementation of the DI platform
- Aidant has doubled the staff working on their core offerings
- Macallan Homes sponsored the 2016 Holiday House
- Macallan Homes is under construction with the largest project to date, 18,000 SF custom home in St. Simons
- Macallan Real Estate has closed \$16 million in sales and has another \$13 million under contract
- Macallan Real Estate will close the largest deal to date in September - \$8.25 million
- LiteWorks Window & Door booked the largest residential job ever
- LiteWorks Window & Door will sell over 2,000 vinyl windows in 2017
- Spec house underway at Randall Mill and first lot under contract
- New and/or refreshed websites
 - The Macallan Group
 - Macauley Investments
 - Braemar Partners
 - LiteWorks Window & Doors
- More robust health/wellness benefits
- Implemented strategic planning process for all companies

MISSION & VISION

OF THE MACALLAN GROUP

Mission Statement:

To improve the quality of life of our people, partners, and clients.

Vision:

A portfolio of companies made successful through synergy and empowerment of our people, enabling them to achieve their personal and professional goals.

Strategic Priorities:

- Improve our internal capabilities to support our projected growth
- Improve both internal and external communications
- Dramatically grow existing businesses
- Add successful new businesses to TMG's current portfolio



BRAEMAR
PARTNERS



BRAEMAR PARTNERS

MISSION STATEMENT

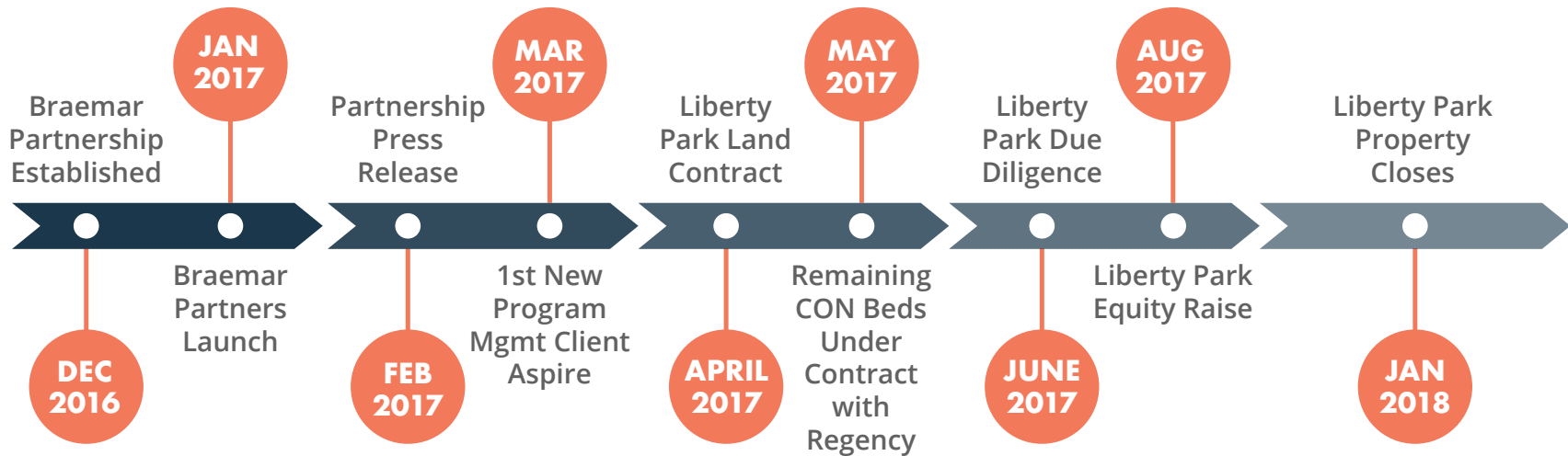
Braemar Partner's mission is to constantly challenge the senior living marketplace, never settling for status quo, always protecting the future of our residents, their families, and our investors. Our company's foundation is set on the principle that no challenge is too great and every challenge breathes opportunities for positive change, resulting in amazing communities for Seniors.

Our experiences are inspiration to challenge us to improve the quality of life for our residents and maximize the returns of our investors.



BRAEMAR PARTNERS

TIMELINE





BRAEMAR
PARTNERS

LONGLEAF AT LIBERTY PARK DEVELOPMENT

NEW CONSTRUCTION

- \$26,500,000
- 95 units (68 AL/27 MC) slated to break ground 2/5/2018
- 15 month construction period





ASPIRE DEVELOPMENT PARTNERS

NEW DEVELOPMENT REPRESENTATION
PROJECT & CONSTRUCTION MANAGEMENT



ASPIRE AMELIA NEW CONSTRUCTION

- \$34,000,000
- Independent living
- Assisted living
- Memory care
- 20 cottages

AGE RESTRICTED

- For sale
- Single family community
- 28 lots



ASPIRE HAMILTON MILL NEW CONSTRUCTION

- \$18,500,000
- Independent living
- 11 cottages



ASPIRE BRIDGEMILL NEW CONSTRUCTION

- \$38,000,000
- Independent living
- Assisted living
- Memory care
- 26 cottages



PHOENIX SENIOR LIVING

NEW DEVELOPMENT REPRESENTATION
PROJECT & CONSTRUCTION MANAGEMENT



*PHOENIX SENIOR
LIVING: UNION HILL
NEW CONSTRUCTION*

- \$38,000,000
- 78 Independent living
- 48 Assisted living
- 24 Memory care

*PHOENIX SENIOR
LIVING: BRASELTON
NEW CONSTRUCTION*

- \$41,000,000
- 84 Independent living
- 48 Assisted living
- 24 Memory care



THRIVE SENIOR LIVING (PENDING)

NEW DEVELOPMENT REPRESENTATION
PROJECT & CONSTRUCTION MANAGEMENT



*THE TRIBUTE AT MELFORD
NEW CONSTRUCTION*

- \$29,000,000
- Bowie, MD
- 140 units AL/MC

*THE TRIBUTE AT BLACK HILL
NEW CONSTRUCTION*

- \$28,000,000
- Germantown, MD
- 140 units AL/MC



PHOENIX SENIOR LIVING ARTEMIS REAL ESTATE PARTNERS

ACQUISITION VALUE ADD RENOVATIONS
PROJECT & CONSTRUCTION MANAGEMENT



PHOENIX SENIOR LIVING

- Anticipated \$3 million renovation
- Phoenix Senior Living Albany
- Phoenix Senior Living Dunwoody
- Phoenix Senior Living Roswell



ARTEMIS REAL ESTATE PARTNERS

- Anticipated \$7 million renovation
- Artemis Buckhead
- Artemis Marietta
- Artemis Alpharetta



BRAEMAR PARTNERS

PROJECT PURSUITS

LOCATIONS

ALABAMA

Auburn

GEORGIA

Atlanta

Macon

Valdosta

TEXAS

Austin

Dallas

VIRGINIA

York County

(JV opportunity
for IL/AL/MC)

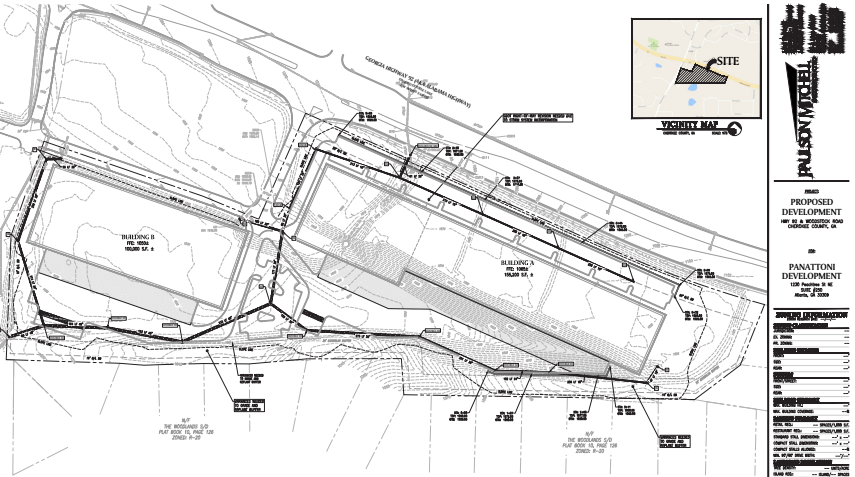




MACALLAN[®]
REAL ESTATE



MACALLAN REAL ESTATE COMMERCIAL



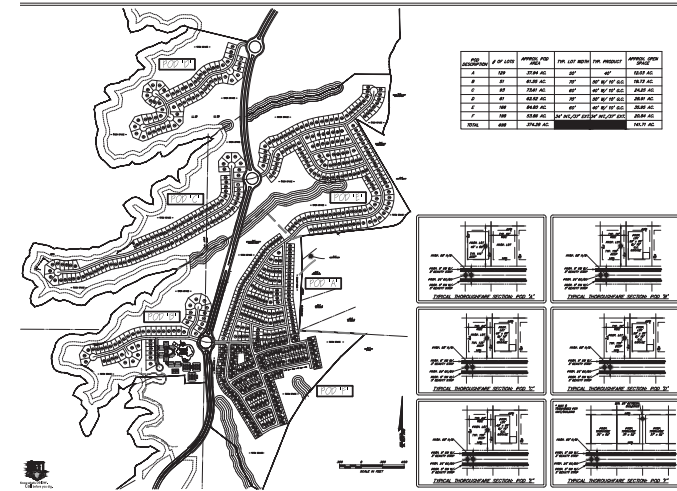
HAPPY CAMPERS RV DEALERSHIP

- Hwy 92, Woodstock, GA
- Cherokee County
- Closed, but reselling outparcels
- 37 acres
- \$5,100,000



MACALLAN REAL ESTATE

COMMERCIAL



THE BLUFFS

- Canton, GA
- Under contract / closing November 2017
- Lennar Homes
- 40 acres (part of 300 acre master plan development)
- \$1,900,000



MACALLAN REAL ESTATE

COMMERCIAL



DEFUNIAK SPRINGS

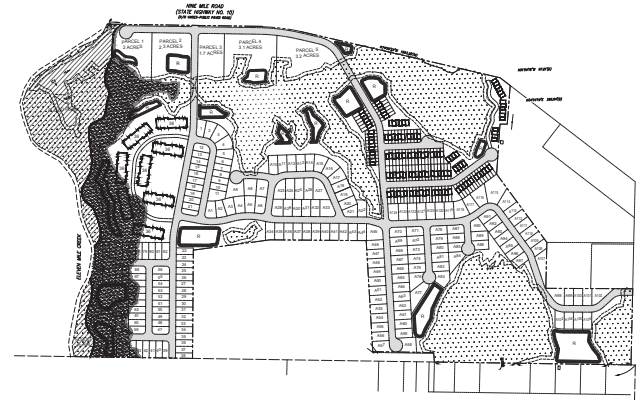
- Defuniak Springs, FL
- Sold one acre in June 2017
- 280 acres remaining
- Planning, engineering and rezoning remaining acreage
- Total value \$5,000,000+





MACALLAN REAL ESTATE

COMMERCIAL

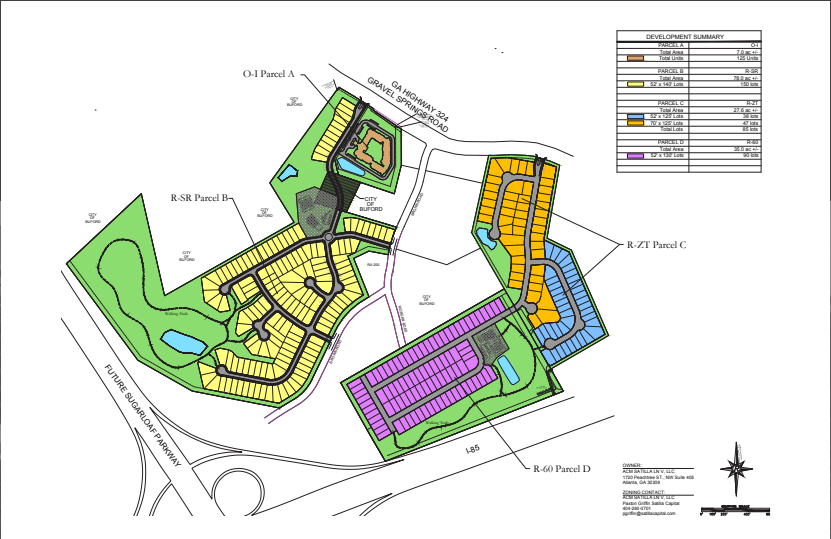
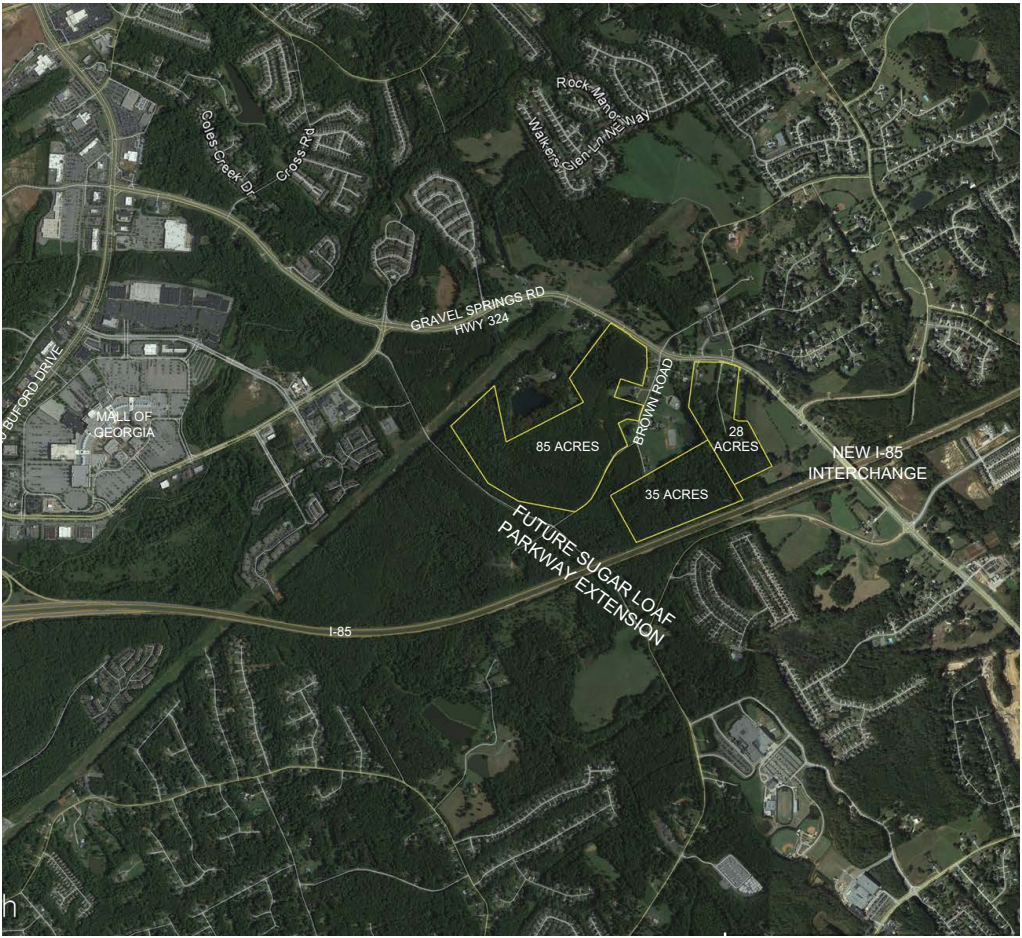


EAST RIVER OAKS

- Pensacola, FL
- Under contract / closing September 19
- 174 acres / 120 upland
- Mixed use, residential, multi-family and retail
- \$8,250,000



MACALLAN REAL ESTATE COMMERCIAL



GRAVEL SPRINGS ROAD

- Buford, GA
- Gwinnett County
- Zoning complete / engineering underway
- 148 acres
- Residential and senior living
- \$9,000,000



MACALLAN REAL ESTATE

COMMERCIAL



MINE LAKE ESTATE

- Monticello, GA
- Under contract to City of Monticello
- Closing November 2017
- 705 acres / 40 acre lake / reservoir
- \$3,100,000



MACALLAN REAL ESTATE

COMMERCIAL



POOLER

- Pooler, GA (next to new Tanger Outlet Mall)
- 95 acre new listing
- Residential land and three billboards
- Planning / engineering / rezoning remaining acreage
- List Price \$6,000,000



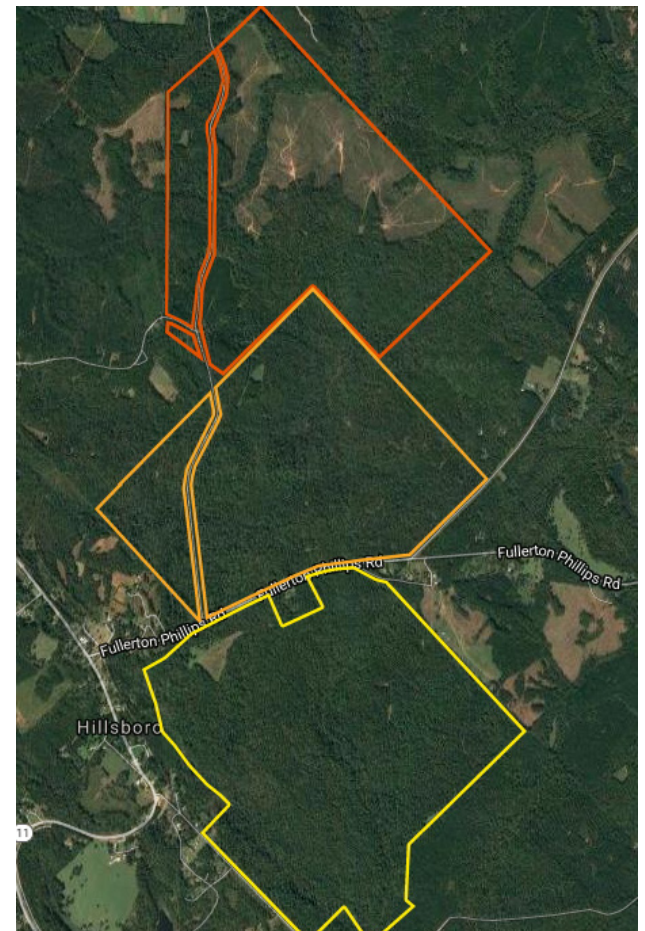
MACALLAN REAL ESTATE

COMMERCIAL



SAMMONS PROPERTY

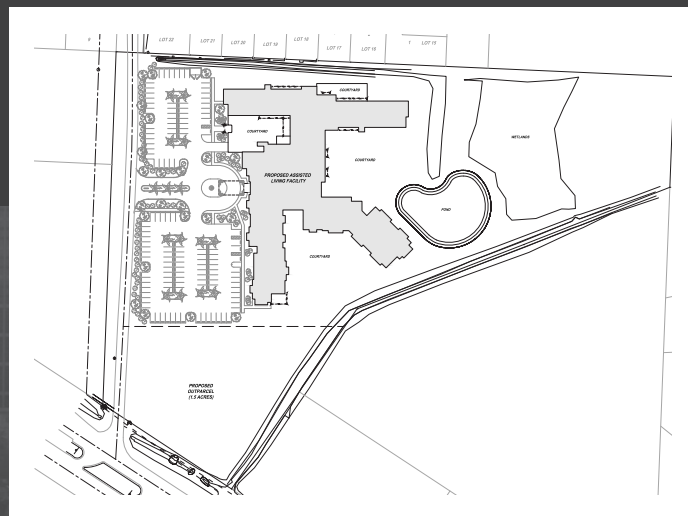
- Hillsboro, GA
- Jasper County
- New listing
- 1,700+ Acres / Timber land
- \$5,500,000





MACALLAN REAL ESTATE

COMMERCIAL



DESTIN EXCHANGE

- Destin, FL
- Under contract for senior living
- 10.6 acres
- Selling 1.25 acre outparcel
- \$3,000,000



MACALLAN REAL ESTATE RESIDENTIAL



GWINNETT NSP

- Program winding down with one remaining home in inventory; no additional acquisitions anticipated
- Laurie Collins continuing to handle NSP as well as various market transactions



MACALLAN HOMES SPEC HOUSE

- Brokerage fee on disposition
- Partnership with Ansley Atlanta



AIDANT
TECHNOLOGIES



AIDANT TECHNOLOGIES

PRODUCT UPDATE



Product Platform is called the “DI-Platform” and is completed and successfully implemented at OFS Optics

- It handles over 2 million transactions per year (averaging over 7,000 per day)
- Very positive feedback from users (technical and business users)



AIDANT TECHNOLOGIES

PRODUCT UPDATE | PLATFORMS



RETAIL



SUPPLY CHAIN



AG-INDUSTRY



HEALTHCARE



TRANSPORTATION



*WAREHOUSE
MANAGEMENT*



AIDANT TECHNOLOGIES

SALES STRATEGY

PRIORITIES

- Add immediate revenue
- Build the pipeline and sales funnel
- Productize the software platform
- Define/refine the sales process (external)
- Build sales structure (internal)





AIDANT TECHNOLOGIES

MARKETING UPDATE

DEFINING THE PRODUCT

- Better articulation of company and product on website and marketing materials
- Looking forward to ramp up sales
- Licensed and subscription model

MARKETING EFFORTS

- Regular blog posts
- Promoted through our social networks and paid promotion on LinkedIn
- Doubles site traffic when posted; more than that when promoted on LinkedIn

The screenshot displays the Aidant Technologies website's blog page. At the top, there is a navigation menu with links for EDI SOLUTIONS, ABOUT, INSIGHTS, CAREERS, CONTACT, and BLOG. The main content area features three blog posts:

- Microsoft BizTalk Support Lifecycle** (August 30, 2017): Accompanied by an image of a hand holding a clock face with the text 'TIME TO UPDATE'. The text discusses an upgrade for users of 2013R or older. It includes a 'READ MORE' link and social sharing options (0 Likes, Share).
- Still Using Covast? Time to Consider an Upgrade.** (August 18, 2017): Accompanied by an image of a green glowing circular pattern. The text explains that despite expectations, X12 and EDIFACT standards remain important. It includes a 'READ MORE' link and social sharing options (0 Likes, Share).
- Think Cloud Integration is Pie in the Sky? Say Hello To – Hybrid Integration!** (July 24, 2017): Accompanied by an image of a cloud with data points. The text discusses the evolution of cloud technologies and their impact on traditional software models. It includes a 'READ MORE' link and social sharing options (1 Like, Share).

At the bottom of the page, there is a footer with a list of services: PaaS, SaaS, IaaS, EDI, Integration, Cloud Integration, XML, Supply Chain Logistics, Retail Integration, POS Integration, EAI, ETL, Data Warehouse, Transportation, Web Services, SOA.



AIDANT TECHNOLOGIES

MARKETING UPDATE

PAID GOOGLE SEARCH ADS

- Short ad campaign (less than 1 month)
- 100 visitors to site from ads
- Learnings for more marketing efforts

OTHER MATERIALS

- One pager on company
- One pager on product
- Updated website
- Updated templates
- Additional materials to come (including printed brochure, email newsletter)

ABOUT US

Founded in 2003 as Quick Solutions, Aidant Technologies launched in 2016 as an Atlanta-based boutique EDI/EAI services provider.

We focus on supporting companies in manufacturing and distribution, especially Order-to-Cash with particular expertise in:

- Parts/components
- Building materials
- Financials
- Agriculture
- Healthcare
- Retail
- Supply chain and logistics (Warehouse, Distribution, TMS, 3PL etc)

We customize and support cloud, hybrid, and on-premise EDI/EAI implementations to make your business run more smoothly, balancing business goals, security, and budget at all times. We can also integrate line-of-business systems with SAP, JD Edwards, Oracle, PeopleSoft, Lawson, and MS Dynamics.

With our proven methodology, Aidant's professional services team uses our proprietary platform to increase EDI / EAI implementation efficiency. Our approach is platform agnostic and we customize our implementations based on client and industry need.

ABOUT OUR SOLUTION

OUR DATA INTEGRATION (DI) PLATFORM ENABLES:

- Aggressive speed-to-market
- Hands-off trading partner onboarding
- Access to historical data analysis of past transactions
- True end-to-end visibility via customizable dashboards
- Support of reporting tools
- Integrated DI Portal for reporting
- Ability to track and proactively fix/reprocess errors and exceptions

OUR APPROACH TO EDI/ EAI

PROFESSIONAL SERVICES+

- Proprietary Data Integration (DI) platform used by team to increase efficiency
- Proven methodology that starts with Discovery
- Custom development based on client need and industry
- Senior resources assigned to your team
 - Senior resources have deep industry experience.
 - Our implementations are platform agnostic.
 - We can support all of your EDI/EAI integration needs.

404.220.7681 | info@aidant-tech.com | www.aidant-tech.com

Aidant Technologies Promoted + Follow

Why is EDI beneficial? Check out the most recent blog post from Amit Kumar, MBA <https://lnkd.in/eH-RVRd>

Why EDI?
www.aidant-tech.com

9 Likes · 2 Comments

Like Comment Share

Data Integration Specialists - Aidant Technologies
www.aidant-tech.com
Boutique EDI services provider for over 15 years. Cloud, hybrid or on-premise.

Data Integration Specialists - Aidant Technologies
www.aidant-tech.com
Boutique EDI services provider for over 15 years. Cloud, hybrid or on-premise.



MACALLAN
CAPITAL



RANDALL MILL WAY RESIDENTIAL DEVELOPMENT



- Great Buckhead location
- Six acre assemblage / five individual home sites
- Lots are listed at \$1 million - \$1.4 million
- Buckhead architect Tim Adams to custom design homes for each lot
- Development complete
- Spec house underway on lot one & spec house expected to start on lot four in Fall
- Lot two under contract



1460 MOORES MILL RESIDENTIAL DEVELOPMENT



- Buckhead
- 7,000 SF traditional home
- Speculative home constructed by Macallan Homes
- Sold March 2017 for \$1,500,000





3008 HABERSHAM WAY

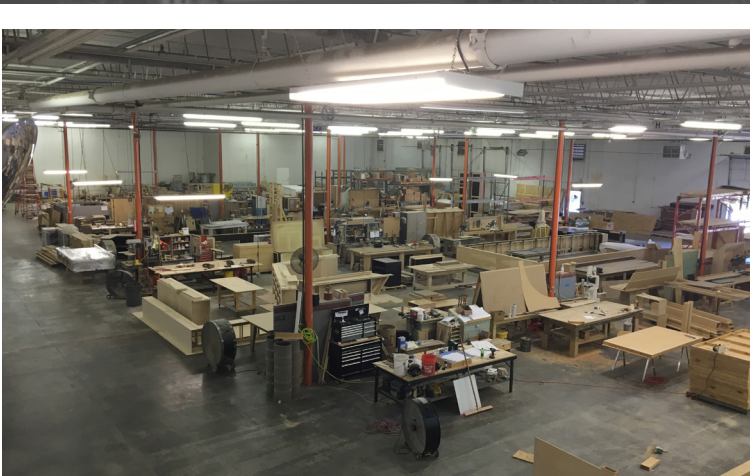
RESIDENTIAL INVESTMENT

- 6,500 SF traditional home
- Purchased as a short sale negotiation with the bank
- Sold in 90 days





2525 PARK CENTRAL COMMERCIAL INVESTMENT



- Decatur, GA
- 51,192 SF industrial/flex building
- Construction upgrades/renovations complete
- Tenant moved in April, 2016 / 100% leased to Malone Design/Build for 10 years
- Macallan Capital purchased the building
- Macallan Construction managed landlord renovations
- Macallan Real Estate negotiated building purchase and tenant lease
- Investment opportunity arose out of Garrison sale to Malone
- Under contract for sale



NORTHWEST DRIVE BUFFINGTON RD LAND INVESTMENTS



NORTHWEST DRIVE

- Atlanta, GA
- West side location in path of progress
- Five acre raw land purchase purchased at auction
- Buy and hold strategy for future development opportunities
- Significant new developments announced in immediate proximity to our site



BUFFINGTON RD

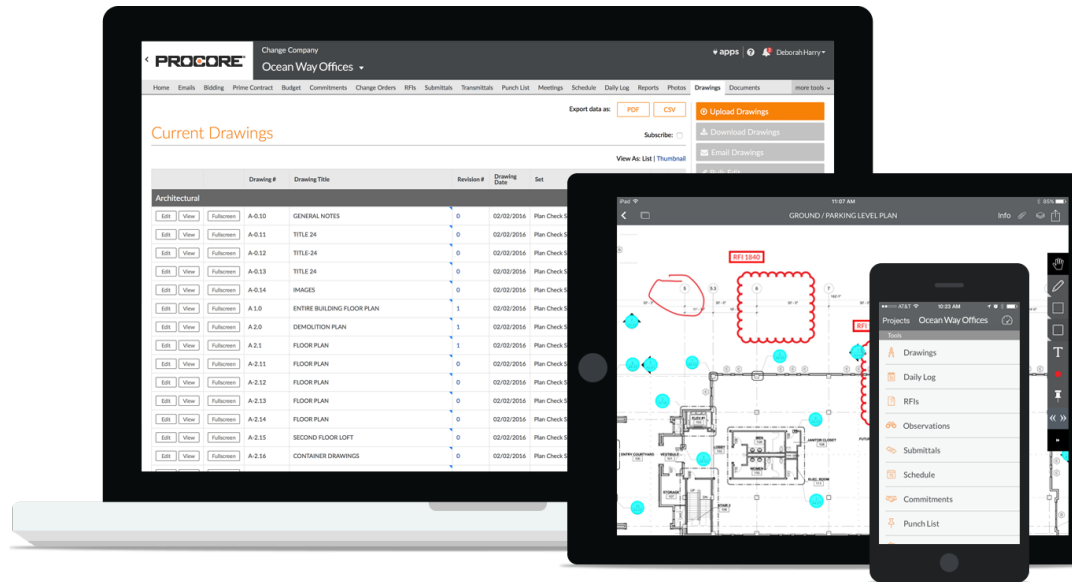
- Atlanta, GA
- Near airport along I-85 in South Fulton
- 34 acre partially developed townhome tract purchased in 2011
- Future sale or development opportunity



MACALLAN
CONSTRUCTION



STRATEGIC PLAN OPERATIONAL INITIATIVES



Procore Implementation
Improvements in Field Supervision
Hiring of Preconstruction Manager
Focus on Safety



STRATEGIC PLAN

MARKET FOCUS



Focus on Larger Projects
Historic Renovations
Board of Regents/Task Orders
Non-Profits/Religious
Senior Living
Retail/Restaurant/Medical
Multi-Family Infill



LOGAN FARM HOUSE

COMPLETED



- Historic renovation of 1,015 SF early 1900's Logan Farm House
- Hard Bid (City of Acworth)
- Demolition of rear rooms while retaining the original farm house structure, addition of a large meeting room, new baths, kitchen area, large rear deck and ground level patio
- Salvaged wood from the demolition and reused it in the interior renovation work

Team: Nathan, John & Brian





ART HOUSE AT LOGAN FARM UNDER CONSTRUCTION

- Historic renovation of 1930's house to be leased out to a non-profit to operate as an art facility
- Hard Bid
- Site work related to a 29 space parking lot and sidewalk with access to both Cherokee and Taylor street
- Interior/exterior painting, roofing improvements, porch repairs/ replacement, structural reinforcement, sub-flooring replacement/installation, minor landscaping, mechanical repair/ improvements, plumbing improvements, electrical repairs improvements, general carpentry, framing, millwork, drywall repair and floor finishes

Team: Nathan, Brian, John





CALLANWOLDE FINE ARTS CENTER

UNDER CONSTRUCTION



- Refreshing the exterior of the Gardener's Cottage to include new exit stairs, adding retaining walls and footings for the new 1,450 SF greenhouse on the existing historic foundation along with some landscape and hardscape additions
- Negotiated

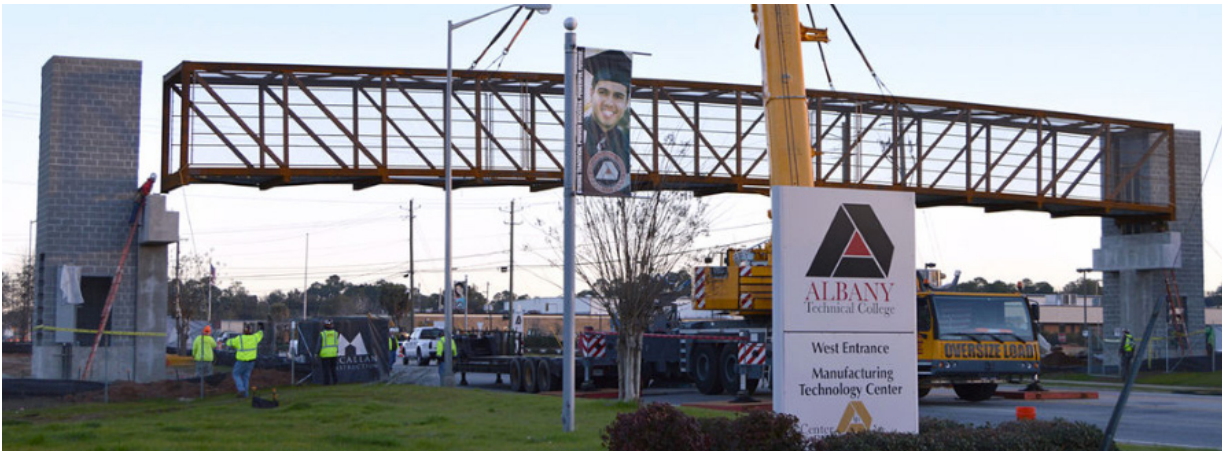
Team: Nathan, Kerri, Dave





ALBANY TECHNICAL COLLEGE

COMPLETED



- Pedestrian bridge connecting East and West campus
- Design/build project for GSFIC

Team: Steven, Jackie, Bill, Tad, James



GSU RECREATION CENTER WEIGHT ROOM EXPANSION COMPLETED



- Demolition of an existing squash court and construction of an expansion to the existing weight room and construction of a mezzanine level for use as an office and storage space
- Hard Bid

Team: Steven, Tad, James, Terry



GEORGIA TECH TASK ORDER WORK COMPLETED



STUDENT ENGAGEMENT

Consisted of building new sound walls in three offices, demo existing work stations in six offices, touch up all walls as well as paint. Relocated cabinets and coordinated the carpet and base install. This was a three week project.



TECH TOWER

Managed the process of pressure washing and painting the windows and exterior trim of a five-story building. Coordinated contractors for waterproofing, tuck pointing, demo of miscellaneous materials. Helped GT eliminate a water intrusion issue they have had while working with several contractors.

WHITAKER BUILDING

Administrative space that was renovated to create more office spaces. Demo of selective walls and all finishes, relocation of fire alarm and sprinklers, rework HVAC duct work, and a new light layout.

Finishes were new paint and carpet throughout and selective door and cabinets as needed to fit in the new space. This was a five week project.

Team: Bill, Jackie (All three projects)





GSU 55 PARK PLACE 12TH FLOOR UNDER CONSTRUCTION



- Renovation of 27,873 SF of interior space to house the Robinson College of Business and Delta Student Success Center
- Hard Bid
- Business space consisting of office, meeting, student lab and a monumental lighted staircase connecting to the 11th floor via the atrium
- High-end finishes

Team: Steven, Tad, James, Shane



GSU REC CENTER TURNSTILE UPGRADE UNDER CONSTRUCTION



Installation of new turnstiles with biometric readers and a new reception desk

Team: Steven, Tad, James, Terry



GEORGIA TECH 755 MARIETTA ST UNDER CONSTRUCTION

- Phase one of this task order assignment includes the demo and renovation of 12,276 SF of a former jewelry distribution warehouse space into a creative open office environment for the Georgia Tech Finance & HR departments
- Phase two includes additional interior scope and building exterior upgrades
- Phase three incorporated civil work to improve parking and upgrade hardscapes
- Task Order

Team: Dean, Bill, Kerri





FRENCH BUILDING WATERPROOFING UNDER CONSTRUCTION

- Design / build to excavate, waterproof and backfill the foundation wall of a historic building on campus. Includes improvements to site drainage
- Task Order

Team: Bill, Jackie





ONGOING PROJECTS



CANTERBURY COURT CCRC

- 300 unit, occupied, multi-building, high rise retirement community
- Task Order
- Demolition and interior renovation of over 200 different projects that include residential units as well as lobby, kitchen and exterior renovations

Team: Nathan, David, Oscar



GEORGIA WORLD CONGRESS CENTER TASK ORDER



GEORGIA STATE UNIVERSITY TASK ORDER



GEORGIA TECH TASK ORDER



JOHN'S CREEK BAPTIST CHURCH COMPLETED



- Various renovation and infrastructure projects in the sanctuary and gymnasium to support audio / video / lighting installation
- Cost Plus

Team: Jackie, Allan



EMBRY HILLS DENTAL OFFICE

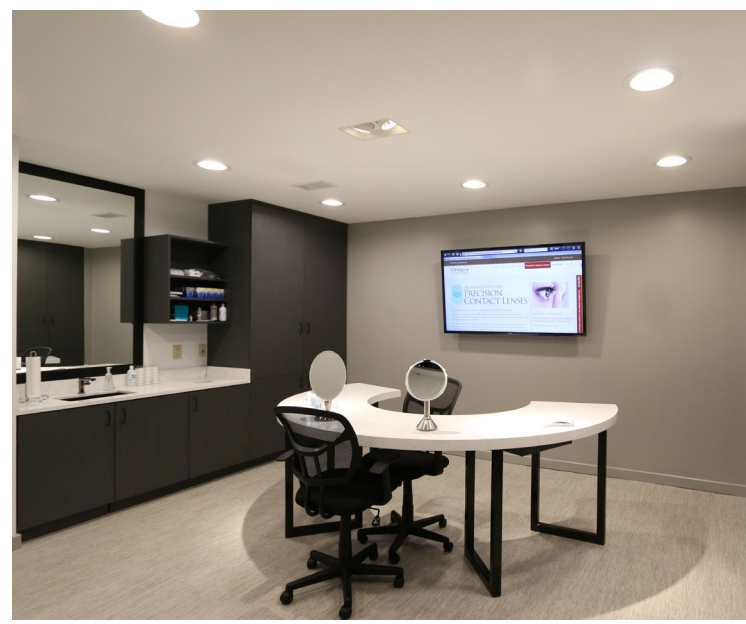
COMPLETED



- 2,900 SF interior renovation to including reception, three treatment rooms, panoramic x-ray, lab, break room, consultation room and private office
- Lump Sum

Team: Nathan, Brian





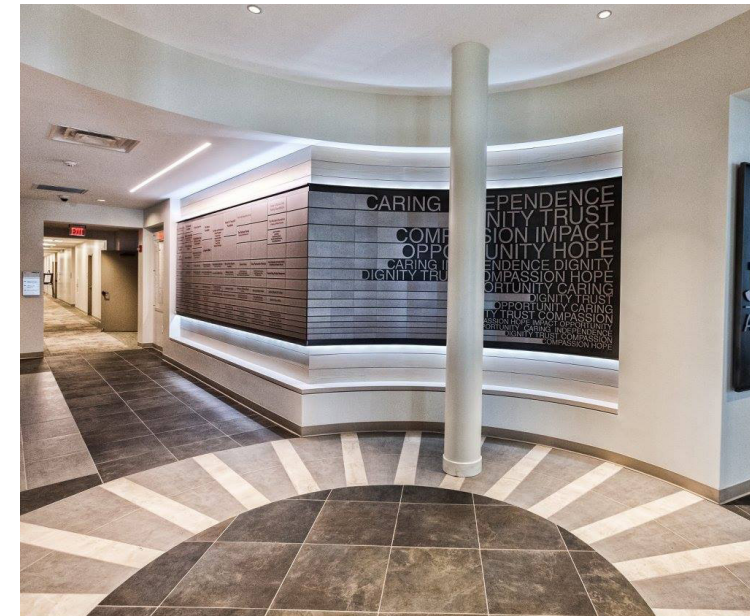
OPTIQUE AT WEST PACES FERRY COMPLETED PROJECTS



- 2,386 SF interior renovation of high-end optometrist office
- Lump Sum

Team: Nathan, Jackie, Dave



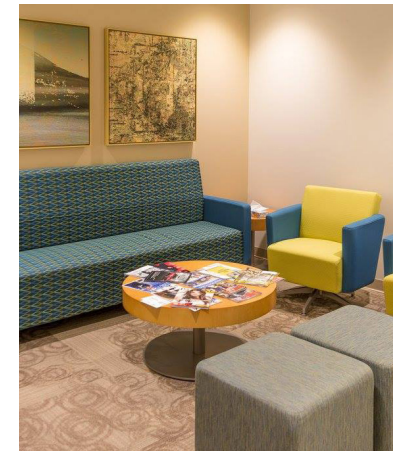


JEWISH FAMILY & CAREER SERVICES COMPLETED



- Renovation of 8,000 SF of existing counseling and administrative offices
- Negotiated
- Construction and renovation of reception and break room - 2,700 SF
- Construction of Tools for Independence building including office & training space - 8,300 SF
- Site improvements include new parking, bio-retention and new utilities
- Achieved Earthcraft Gold Certification

Team: Steven, Kerri, Allan





ALPHARETTA ARTS CENTER & WESTMINSTER PRESBYTERIAN

UPCOMING PROJECTS



ALPHARETTA ARTS CENTER

- Renovation of interior and exterior of the former Fulton County Library into the new home of the City of Alpharetta's Art Center
- Cost Plus GMP
- Intentions for the center include varying studio spaces, including raw industrial; equipment intensive, for ceramics, wood workings, heavy arts; a small black box theater for performing; a media studio for digital arts and movie viewing; plus flexible space to accommodate galleries and special events
- Currently in preconstruction phase

Team: Steven, John, Tad



WESTMINSTER PRESBYTERIAN

- Demo of existing Fellowship Hall and Administrative offices
- Cost Plus GMP
- Addition of 250 seats in new side balconies built inside of existing Sanctuary
- Currently in preconstruction phase



GLOBALTM
STABILITY

GLOBAL STABILITY

HELICAL PROJECTS

TYSON FOOD PROCESSING CENTER, TX

- Indoor shoring for proposed effluent tank
- 19' deep / five rows
- Installed while plant was fully operational



PAPPADEAUX SEAFOOD RESTAURANT MARIETTA, GA

- 165 high strength helical tie backs to support failing retaining wall supporting fill dirt on which the restaurant sits



GLOBAL STABILITY

RETAINING WALL PROJECTS



JACKSON HEALTHCARE ALPHARETTA, GA

- Design build modular walls (9,500 SF) with helical soil nails
- We supplied and hauled in all backfill material

GLOBAL STABILITY

RETAINING WALL PROJECTS



PLAYERS CLUB

TALLAHASSEE, FL

- 23,500 SF design build
- 14 modular retaining walls

GLOBAL STABILITY

RETAINING WALL PROJECTS



DAVITA DIALYSIS CENTER STOCKBRIDGE, GA

- Design build 4,500+ SF GRAVIX gravity retaining wall system
- Includes excavation, stone back fill and installation

GLOBAL STABILITY

RETAINING WALL PROJECTS



INTERSTATE NORTH MARIETTA, GA

- Global's first DOT job for Cobb County and GA DOT
- 24,500 SF
- Leveling pad, excavation and installation of three DOT GRAVIX walls

GLOBAL STABILITY

SPECIALTY SITE SERVICES - GC



STONEWALL TERRACE

VININGS, GA

- Global's first GC turnkey design build project
- Clearing, tree removal, excavation, shoring, sewer outfall rehab, building stabilization, grading, retaining wall installation and landscaping





GLOBAL STABILITY

UPCOMING PROJECTS

STERLING VININGS

BRASELTON LOGISTICS

ATLANTA SPEECH SCHOOL

PREFERRED FREEZER

JACKS RESTAURANT

TRENHOLM

OAKDALE WOODS

ATLANTA YOUTH SOCCER

Multiple subdivisions and turnkey development projects under negotiation



MACALLAN
CUSTOM HOMES



2490 WOODWARD WAY COMPLETED



NEW CONSTRUCTION

- 2016 Atlanta Homes & Lifestyles Holiday House
- Buckhead
- Architect: Pak Heydt & Associates
- 6,400 SF
- Traditional style

Construction Manager: Steve Howson





3019 EAST PINE VALLEY COMPLETED



NEW CONSTRUCTION

- Buckhead
- Architect: Either * Orr Architects
- 4,000 SF
- Modern style

Construction Manager: Steve Howson





2618 PARKSIDE DRIVE COMPLETED

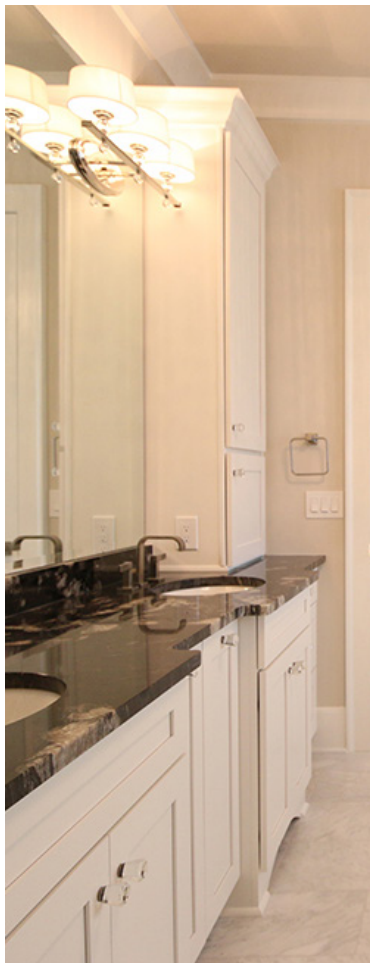


NEW CONSTRUCTION

- Buckhead
- Architect: Ross Piper
- 5,000 SF main house / 1,500 SF guest house
- Craftman style
- Main house & separate guest house

Construction Manager: Gabe Johnson





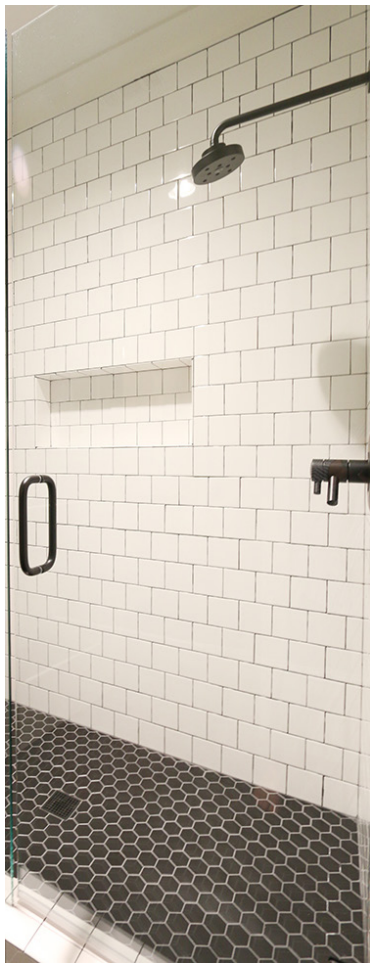
3805 CLUBLAND TRAIL COMPLETED

NEW CONSTRUCTION

- East Cobb
- Architect: Ross Piper
- 5,600 SF
- Traditional ranch with basement

Construction Manager: Gabe Johnson





1347 NORTHVIEW AVENUE COMPLETED

NEW CONSTRUCTION

- Virginia Highlands
- Architect: Brandon Ingram
- Designer: Laura Torbert
- 6,500 SF
- Traditional style
- Features a wine cellar, golf simulator, home gym

Construction Manager: Craig Smith & David Childers





1460 MOORES MILL COMPLETED



NEW CONSTRUCTION

- Buckhead
- Architect: Harrison Design
- 5,000 SF
- Traditional style spec home
- Sold January 2017





375 ROBIN HOOD 3088 MARNE DRIVE 2391 HANOVER WEST COMPLETED



3088 MARNE DRIVE NEW CONSTRUCTION

- Buckhead
 - Architect: Either * Orr Architects
 - 4,237 SF / traditional style
 - Tear down to foundation & rebuild
- Construction Manager: Steve Howson*



375 ROBIN HOOD NEW CONSTRUCTION

- Buckhead
- Architect: Harrison Design
- 10,700 SF
- Traditional style

2391 HANOVER WEST RENOVATION

- Buckhead
- Architect: Call Designs
- Traditional style
- Renovation- added chimney, reconfigured first floor, upgraded kitchen





352 HERRINGTON DRIVE RANDALL MILL LOT 1 UNDER CONSTRUCTION



352 HERRINGTON DRIVE
NEW CONSTRUCTION

- Buckhead
- Architect: Norris Broyles
- Three car garage w/ apartment

Construction Manager: Gabe Johnson



RANDALL MILL LOT 1
NEW CONSTRUCTION

- Buckhead
- Architect: TS Adams Studio
- 8,900 SF
- Traditional style
- Spec house

Construction Manager: Gabe Johnson



ST. SIMONS 781 WOODLEY DRIVE UNDER CONSTRUCTION



ST. SIMONS NEW CONSTRUCTION

- Architect: TS Adams Studio
- 18,000 SF
- Traditional style
- Features basketball court, home theatre, gym, pool

Construction Manager: Steve Howson



781 WOODLEY DRIVE NEW CONSTRUCTION

- Architect & Designer: Amanda Orr
- 5,000 SF
- Traditional style

Construction Manager: Craig Smith



2154 HOWELL MILL ROAD UNDER CONSTRUCTION

NEW CONSTRUCTION

- Buckhead
- Architect: Ross Piper
- Designer: Emily Wyatt
- 5,700 SF
- Traditional style
- Demo down to foundation & rebuild

Construction Manager: David Childers





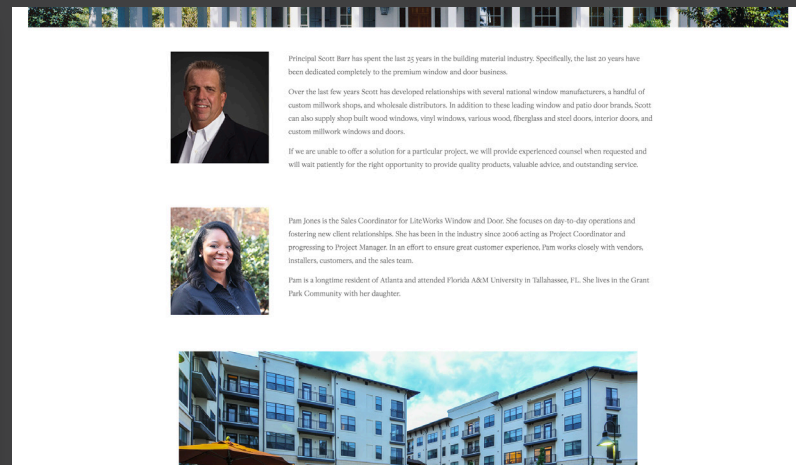
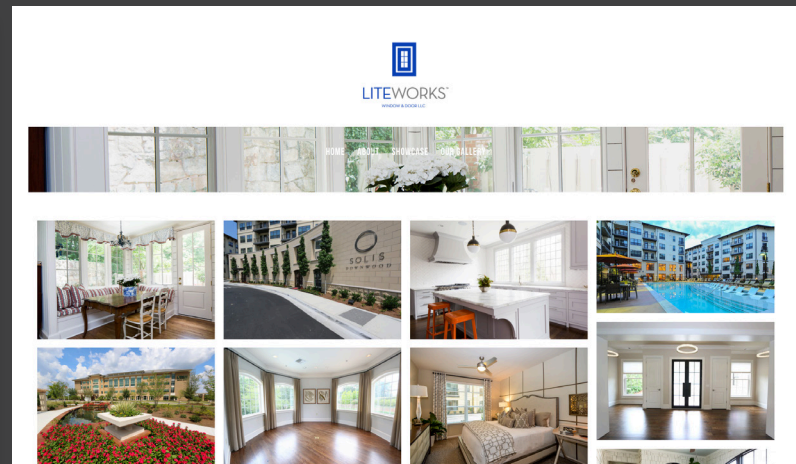
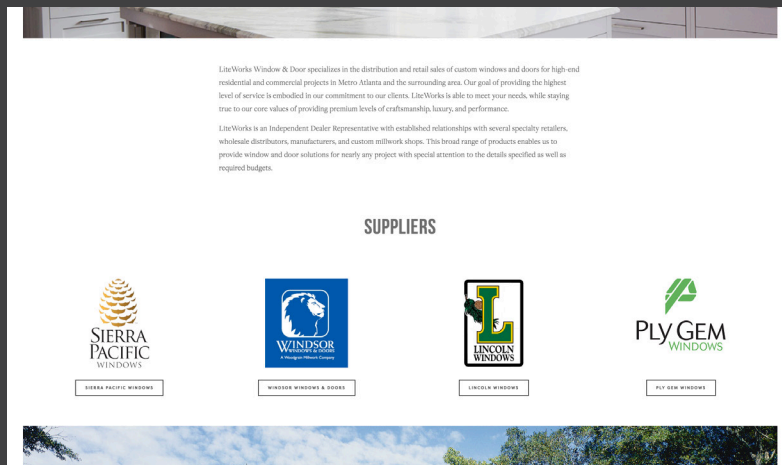
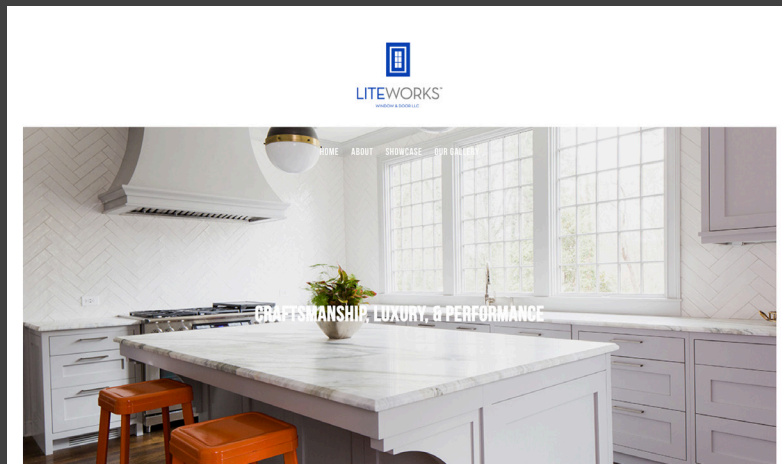
LITEWORKS™

WINDOW & DOOR LLC



LITEWORKS WINDOW & DOOR

NEW WEBSITE



LiteWorks Window & Door specializes in the distribution and retail sales of custom windows and doors for high-end residential and commercial projects to Metro Atlanta and the surrounding area. Our goal of providing the highest level of service is embodied in our commitment to our clients. LiteWorks is able to meet your needs, while staying true to our core values of providing premium levels of craftsmanship, luxury, and performance.

LiteWorks is an Independent Dealer Representative with established relationships with several specialty retailers, wholesale distributors, manufacturers, and custom millwork shops. This broad range of products enables us to provide window and door solutions for nearly any project with special attention to the details specified as well as required budgets.

SUPPLIERS



SIERRA PACIFIC WINDOWS



WINDSOR WINDOWS & DOORS



LINCOLN WINDOWS



PLY GEM WINDOWS



Principal Scott Burr has spent the last 23 years in the building material industry. Specifically, the last 20 years have been dedicated completely to the premium window and door business.

Over the last few years Scott has developed relationships with several national window manufacturers, a handful of custom millwork shops, and wholesale distributors. In addition to these leading window and patio door brands, Scott can also supply shop built wood windows, vinyl windows, various wood, fiberglass and steel doors, interior doors, and custom millwork windows and doors.

If we are unable to offer a solution for a particular project, we will provide experienced counsel when requested and will wait patiently for the right opportunity to provide quality products, valuable advice, and outstanding service.



Pam Jones is the Sales Coordinator for LiteWorks Window and Door. She focuses on day-to-day operations and fostering new client relationships. She has been in the industry since 2006 acting as Project Coordinator and progressing to Project Manager. In an effort to ensure great customer experience, Pam works closely with vendors, installers, customers, and the sales team.

Pam is a longtime resident of Atlanta and attended Florida A&M University in Tallahassee, FL. She lives in the Grant Park Community with her daughter.





LITEWORKS™
WINDOW & DOOR LLC

1270 SPRING STREET UNDER CONSTRUCTION

*NEW SOUTH
CONSTRUCTION*

ATLANTA, GA

- Multi-family
- Over 1,000 vinyl windows and patio doors
- Purchase order received June 2016
- \$344,000 for Sierra Pacific
- Converted to Ply Gem because of price increase and doubled our profit





LITEWORKS™
WINDOW & DOOR LLC

ST. SIMONS RESIDENCE UNDER CONSTRUCTION

MACALLAN HOMES

ST. SIMONS ISLAND, GA

- Sierra Pacific impact resistant windows and doors
- 18,000 SF house
- \$313,000
- Largest house package I have sold in 25 years



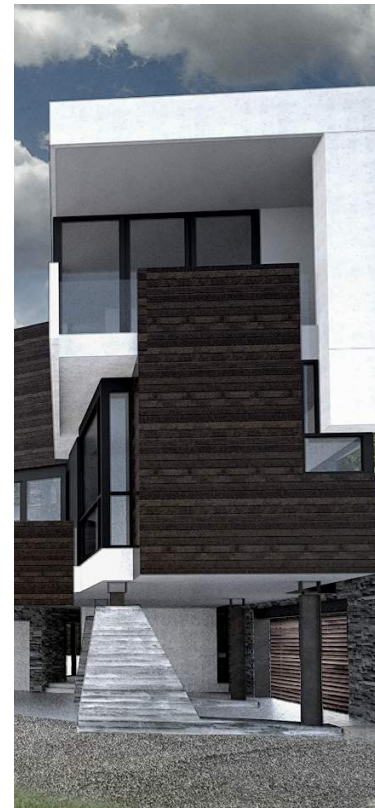


MCKERROW RESIDENCE UPCOMING



CRAFT CUSTOM HOMES ATLANTA, GA

- \$85,000 Windsor windows and doors
- House was originally designed to use storefront glazing but we offered a wood window solution
- Steel frame house





LITEWORKS™
WINDOW & DOOR LLC

TRINITY PLACE COMPLETED



BRADLEY CONSTRUCTION
DECATUR, GA

- Multi-family
- 220 Windsor vinyl windows painted bronze exterior
- \$78,000



BRIDGEWAY VIEW POINT HEALTH CENTER COMPLETED



*CATAMOUNT CONSTRUCTORS
LAWRENCEVILLE, GA*

- Sierra Pacific vinyl windows
- Supplied and installed
- \$64,000



LITEWORKS™
WINDOW & DOOR LLC

CADRANEL RESIDENCE COMPLETED

*DESIGN CONSTRUCTION
BY CRAFTMASTER*

SANDY SPRINGS, GA

- Lincoln aluminum clad windows
- Supplied and installed \$102,000





RIERSON RESIDENCE UNDER CONSTRUCTION



MACALLAN HOMES
ATLANTA, GA

- Sierra Pacific-alder wood interior
- \$70,000



LITEWORKS™
WINDOW & DOOR LLC

LAGASETTI RESIDENCE

UNDER CONSTRUCTION



THE RIVER CLUB
SUWANEE, GA

- Storey Residential
- Lincoln clad windows and doors
- \$135,000



LITEWORKS™
WINDOW & DOOR LLC

CLERY RESIDENCE

UNDER CONSTRUCTION

J BRYANT HOMES
BROOKHAVEN, GA

- Windsor aluminum clad wood windows
- \$85,000





LITEWORKS™

WINDOW & DOOR LLC

NOBLE LAKE RESIDENCE

UNDER CONSTRUCTION



12 STONE BUILDERS
CUMMING, GA

- Windsor aluminum clad wood windows and doors
- \$51,000 supply and install



LITEWORKS™
WINDOW & DOOR LLC

THE RESERVE AT GRANT PARK UPCOMING



FORTUNE JOHNSON, INC.
ATLANTA, GA

- Multi-family
- 859 Ply Gem bronze vinyl windows
- \$216,000



LITEWORKS™

WINDOW & DOOR LLC

BATTAGLIA RESIDENCE

UPCOMING



COASTAL BUILDING & RESTORATION

PANAMA CITY BEACH, FL

- **Sierra Pacific windows and doors**
- **Impact rated with turtle glass**
- **Total \$96,000**



LINK RESIDENCE

UPCOMING



PHILLIP BABB ARCHITECT
ATLANTA, GA

- Windsor aluminum clad wood windows
- \$48,000

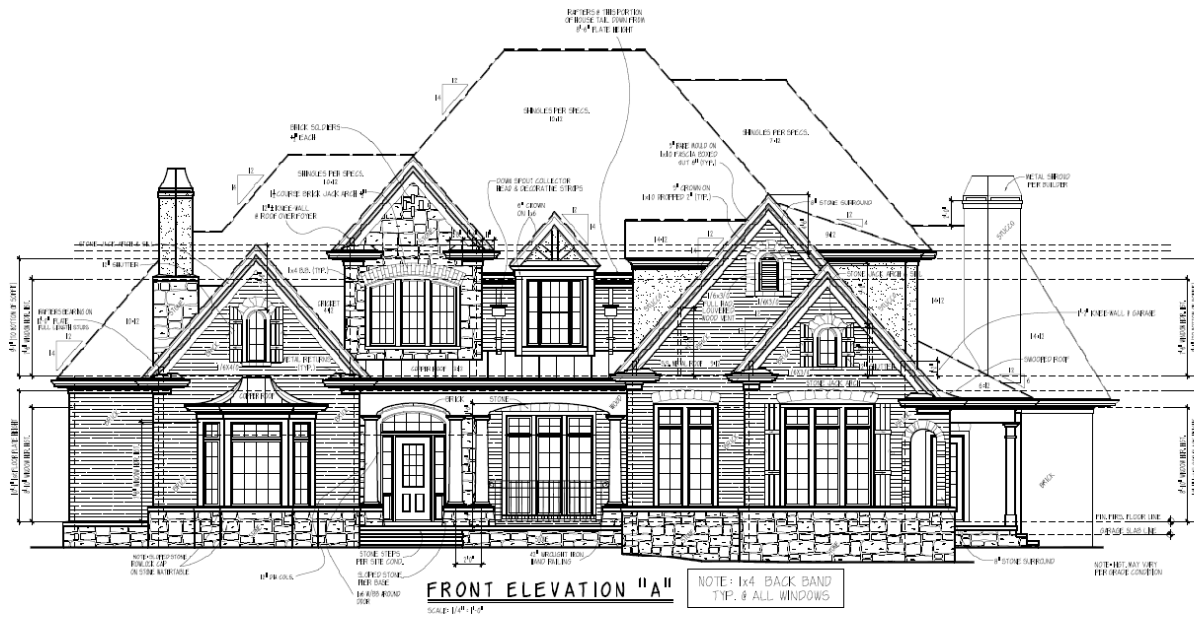


LITEWORKS™

WINDOW & DOOR LLC

REDDY RESIDENCE

UPCOMING



RM CUSTOM HOMES
ATHENS, GA

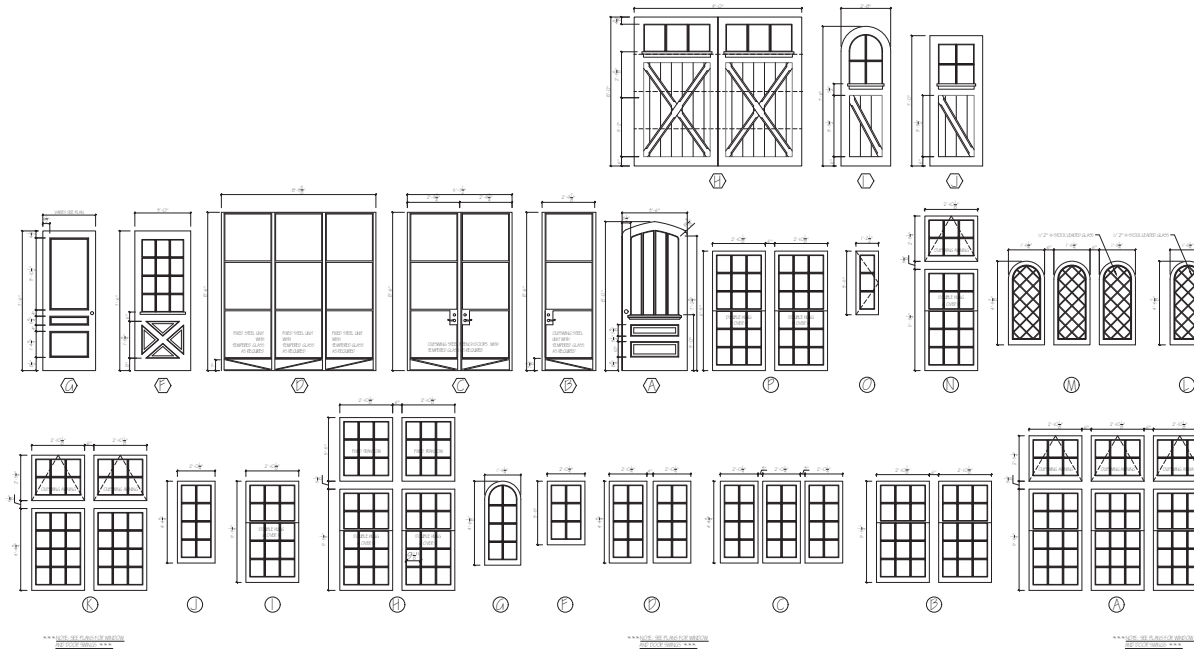
- Windsor aluminum clad wood windows
- \$38,000



LITEWORKS™
WINDOW & DOOR LLC

OYLER RESIDENCE

UPCOMING



CANONBURY HOMES

ATLANTA, GA

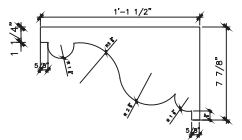
- 65 Custom oversized mahogany windows from Dallas Millwork
- \$115,000



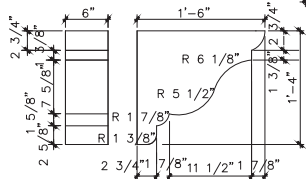
LITEWORKS™

WINDOW & DOOR LLC

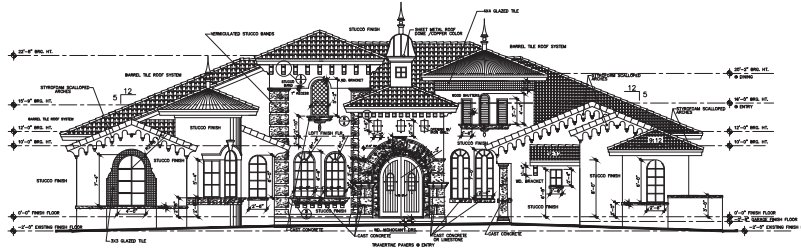
OSSI RESIDENCE UPCOMING



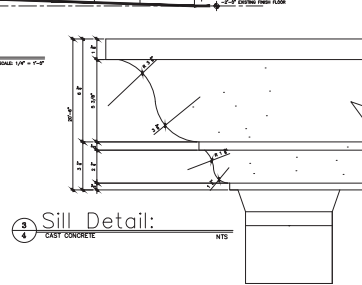
2 Bracket Detail:
WOOD BRACKET NTS



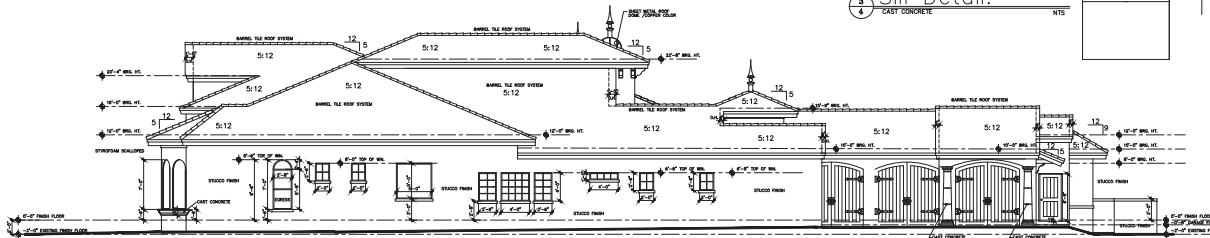
1 Bracket Detail:
WOOD BRACKET NTS



Front Elevation:
SCALE 1/4" = 1'-0"



3 Sill Detail:
CAST CONCRETE NTS



Left Side Elevation:
SCALE 1/4" = 1'-0"

PRIVATE RESIDENCE JACKSONVILLE, FL

- Sierra Pacific clad windows and doors with factory finished Alder interior
- \$72,000

An aerial, grayscale photograph of a city skyline, likely Atlanta, Georgia. The image shows a dense cluster of skyscrapers and office buildings. A prominent teal-colored circle is overlaid in the center of the image. Inside this circle, the word "MACAULEY" is written in a white, serif, all-caps font. The background shows various architectural styles, including modern glass-fronted towers and older, more solid brick buildings. A road with traffic is visible in the lower portion of the frame.

MACAULEY

MACAULEY

MACAULEY INVESTMENTS

PROGRAM MANAGEMENT



- Macauley specializes in walkable, mixed-use, pedestrian friendly developments located throughout the Southeast
- Most of the Macauley projects feature Public / Private / Partnerships
- Macauley relationship with Macallan goes back to 2004 when Jay, Mike, and Michele all worked with Stephen Macauley
- Today Macallan provides Macauley with Corporate Services including:
 - Strategic Advisory Services
 - Program Management
 - Marketing and Creative Services
 - Accounting Services
 - HR Services
- Services team:
 - Jay Rhoden
 - Ashish Bagle
 - Michele Harry
 - Morgan Hall

MACAULEY

MACAULEY INVESTMENTS

PROGRAM MANAGEMENT



NEXUS BUHI

- The property is located at Buford Highway and I-285 in Doraville, Georgia.
- Nexus will be a dynamic mixed-use walkable community with specialty retail, multi-cultural restaurants, office, multi-family, senior living and a select service hotel.
- Situated on 13 acres with a central pedestrian friendly promenade, Nexus will have gardens, water features, arts and dramatic lighting elements.

NEXUS

BUFORD HIGHWAY

MACAULEY

MACAULEY INVESTMENTS

PROGRAM MANAGEMENT



THE RISE

- The Rise is located at Mountain Industrial Boulevard and Hugh Howell Road (DeKalb County).
- The 88 acre former Sears distribution site will include a Dekalb County Elementary School, various restaurants and service retail, and re-purposed industrial buildings.



THE RISE
TUCKER

MACAULEY

MACAULEY INVESTMENTS

PROGRAM MANAGEMENT



SUGAR HILL TOWN CENTER

- Situated directly across from Sugar Hill City Hall and “the Sugar Bowl” amphitheater, this seven acre site of specialty retail, restaurants, multi-family and townhomes, will be central to new dynamic, adjoining mixed use developments.
- A city Epicenter embracing retail, a performing arts theatre, and a public gymnasium along with a Wyndham full service hotel, conference center and condominiums, both flank the Macauley Town Center site.



MACAULEY

MACAULEY INVESTMENTS

PROGRAM MANAGEMENT

FORT MCPHERSON

- The redevelopment of Fort McPherson, a decommissioned U.S. Army military base located in Atlanta, Georgia will be of regional significance and a catalyst for revitalization of the Southwest region of Atlanta. The project will comprise of four districts: the Town Center/Destination District (live/work/play), the Office District (focused on the Tech, Music and Video Game industries), the Historic District (center for entertainment, history, and the arts), and the Park District (open to the public, and an amenity for residents).
- The project will be a national model of sustainable, transit-oriented and mixed-use development, focused on education, job creation and training, affordable housing and healthy living.







THE MACALLAN GROUP

NEW WEBSITE

HOME ABOUT CAREERS CONTACT US

REAL ESTATE CONSTRUCTION & INVESTMENT

The Macallan Group is an Atlanta-based portfolio of companies made successful through synergy and empowerment of our people, enabling them to achieve their personal and professional goals.

CONSTRUCTION
General Contracting division that focuses on commercial projects.

HOMES
Full-service custom home and renovation company dedicated to enhancing the lifestyle of our clients.

REAL ESTATE
Real estate brokerage firm focusing on commercial, residential and land sales across GA, FL, AL, & SC.

CAPITAL
An investment platform that utilizes internal & external equity to invest in real estate opportunities.

Macallan Construction

GENERAL CONTRACTOR

HOME ABOUT CAREERS CONTACT US

At the end of the day, our job is to complete the project within budget and on schedule.

We believe strongly in a team approach and provide transparency to our clients. Our areas of expertise include: higher education, senior living, multi-family, historic restoration, medical office, parks and recreation, clubs/houses, and retail/office tenant improvements, as well as non-profit and public sector projects. www.macallanconstruction.com

At the end of the day, our job is to complete the project within budget and on schedule.

HOME ABOUT CAREERS CONTACT US

Our Leadership

Managing Principals

JAMES L. RHODEN III
Managing Principal
SIC

MICHAEL S. MINUTELLI
Managing Principal
SIC

DEAN DE FREITAS
Managing Principal
SIC



THE MACALLAN GROUP

NEW BRANDING



COLOR PALETTE

Color 1	Color 2	Color 3	Color 4
C:0 M:0 Y:0 K:90	C:0 M:0 Y:0 K:60	Pantone 48-8 U C:0 M:99 Y:0 K:0	Pantone P 120-10 U C:39 M:0 Y:6 K:23
80%	80%	80%	80%
50%	50%	50%	50%
20%	20%	20%	20%

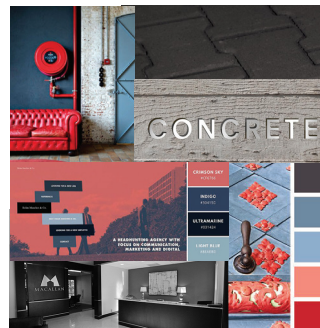
TYPOGRAPHY PALETTE

TRAJAN PRO
REGULAR, BOLD

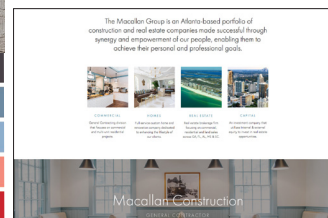
Berthold Akzidenz Grotesk
Bold, SemiBold, Regular, Light

Whitney
Light, Book, Medium, Bold, Black

INSPIRATION



WEBSITE






MACALLAN
HUMAN RESOURCES

HUMAN RESOURCE UPDATES

MONTHLY
NEWSLETTER
COMING
SOON

FEATURING
NEW FACES
AND NEW
PROJECTS



**THE
MACALLAN
GROUP**

OCTOBER 2017 NEWS

MISSION
To improve the quality of life of our people, partners, and clients.

VISION
A portfolio of companies made successful through synergy and empowerment of our people, enabling them to achieve their personal and professional goals.

NEW FACES

Vicki Mitchell
Corporate Controller

As Controller, Vicki will supervise general accounting and project accounting, handle risk management and treasury management responsibilities, and manage full cycle of ...

[read more >>](#)

Allison McLoughlin
Receptionist

Allison graduated from Kentucky State University with a BA in English and comes to The Macallan Group with over six years of experience working in reception/administrative positions.

[read more >>](#)

Christian Davis
Director of Preconstruction

Christian graduated from Southern Polytechnic State University with a Bachelor of Science in Construction Management, following graduation, Christian ...

[read more >>](#)

NEW PROJECTS

ALPHARETTA ARTS CENTER
Macallan Construction...

[visit our blog](#)

PLAYERS CLUB
Global Stability...

[visit our website](#)

View this email in your browser

Copyright © 2017 The Macallan Group. All rights reserved.

Want to change how you receive these emails?
You can [update your preferences](#) or [unsubscribe from this list](#).

OPEN
ENROLLMENT
STARTS OCTOBER
FOR DECEMBER
EFFECTIVE DATE

NEW EMPLOYEE
HANDBOOK
COMING IN
DECEMBER 2017



MACALLAN[®]
philanthropy



CHARITY OF YOUR CHOICE

501(c)(3) Organization
Matching Gift Program



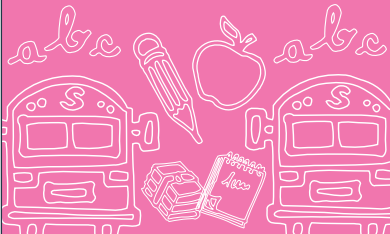
ATLANTA COMMUNITY FOOD BANK

Product Release Center Mobile Food Pantries
Community Gardens Kids in Need



PARTNERS IN EDUCATION

Reading/Lunch Buddy Food/Gift Drive
STEM Days Service Day
Career Day



MUST MINISTRIES

Donations Services Community Kitchen
Elizabeth Inn (Shelter) Annual Fundraisers
Cherokee Program Services Toy Shop



Please reach out to your HR/Marketing Team for more information or email Jen Auxier at j.auxier@macallangroup.com to sign up!



CHARITY OF YOUR CHOICE

501(c)(3) Organization
The employee must provide proof of attendance and a picture wearing their company shirt



Volunteer Request Form

Name (Please print): _____

Charity/Organization: _____

Program: _____

Date/Time of Requested Volunteer Day: _____

Signature of Employee: _____ Date: _____

Signature of Supervisor: _____ Date: _____



{Please submit to Jen Auxier}



MACALLAN
UNIVERSITY



MACALLAN UNIVERSITY

TRAINING & FIELD TRIPS

