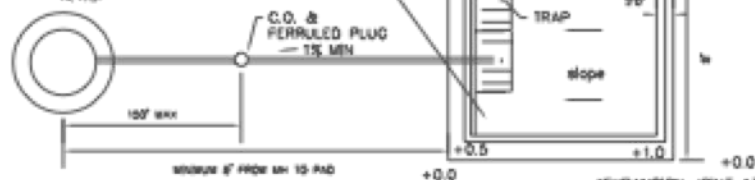
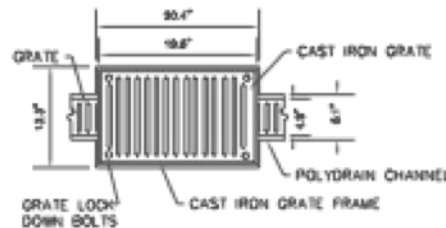


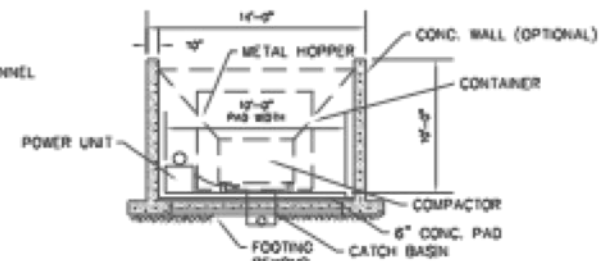
SIDE VIEW
N.T.S.



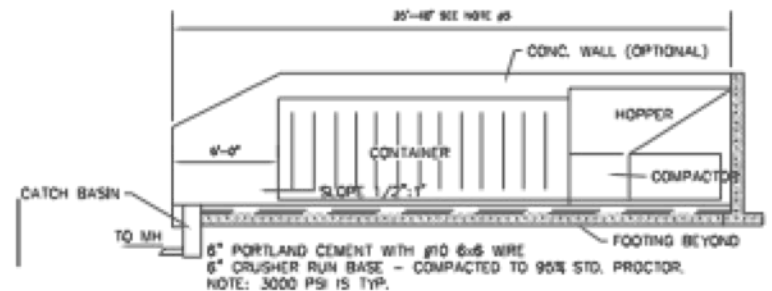
PLAN VIEW
N.T.S.



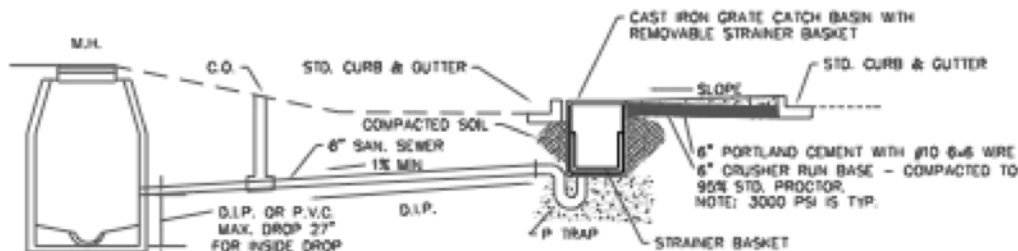
500 SERIES CATCH BASIN
INTERCONNECTED POLYDRAIN
CHANNELS OR APPROVED EQUAL



REAR ELEVATION
N.T.S.



SIDE ELEVATION
N.T.S.
TRASH COMPACTOR



PAD ELEVATION
N.T.S.

NOTES:

1. WATER BIBB REQUIRED WITHIN 50' OF PAD FOR CLEANSING.
2. APPROVAL FROM HEALTH DEPT. REQUIRED.
3. COMPACTOR PAD TO BE 10'-0" WIDE AND A LENGTH OF 5'-0" GREATER THAN THE COMBINED LENGTH OF THE COMPACTOR AND CONTAINER.
4. RUBBER BOOT REQUIRED FOR P.V.C. PIPE. (MANHOLE CONNECTOR) WATER BIBB TO HAVE BACK FLOW PREVENTER.
5. DO NOT CONNECT DRAIN TO GREASE TRAP. SURFACE WATER RUNOFF MUST BE SLOPED AWAY FROM PAD.
6. DO NOT ALLOW STORM WATER RUNOFF ON PAD.
7. 4.5 FOOT CHAIN LINK FENCE WITH 3-4 FOOT ACCESS GATE IS REQUIRED AROUND ALL COMPACTORS AND HOPPERS.
8. UNLESS OTHERWISE APPROVED, DUMPSTER DRAIN TO HAVE A DEDICATED LINE TO MANHOLE.
9. ENCLOSURE IS REQUIRED. MATERIAL BASED ON PLAN DESIGN.

FULTON COUNTY STANDARD DETAIL 703
TRASH COMPACTOR
AND
DUMPSTER PAD DETAILS

DATE	REVISIONS	DATE	REVISIONS
8/08	NRR		

DGS/DRN/DWD JM
APPROVED: REW
DATE: 12-2-06



FULTON COUNTY PUBLIC WORKS
141 PRYOR ST. ATLANTA, GA. 30303
404-612-7400 FAX: 404-224-0498

DRAWING NO.
703